

Lilitab Floor Pro Mount

Assembly Instructions

v6.0

TABLE OF CONTENTS

Assembly Preparation and Packing List.....	3
Features	4
Assembly Instructions	5
Kensington Lock.....	6
Bolt Down Installation	7



**Scan to watch
assembly video!**

Our YouTube Channel also has
assembly videos for most accessories.

GOT QUESTIONS? WE'RE HERE TO HELP!

EMAIL support@lilitab.com **PHONE** 888.705.0190

MOUNT ASSEMBLY PREPARATION

FOR BASE PLATE INSTALLATION, YOU'LL NEED:

- ✓ Phillips screwdriver

FOR BOLT DOWN INSTALLATION, YOU'LL NEED:

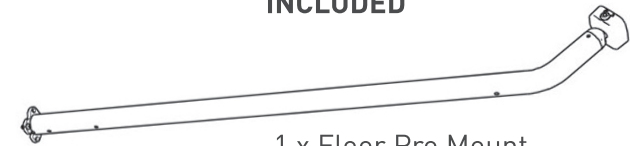
- ✓ Powered drill/driver, preferably with impact action
- ✓ Socket wrench with a neck of at least 5", this may require a socket extension
- ✓ 2 x bolts, wood screws or other fastener suitable for your floor's substrate (m6, no.14 or 1/4" diameter)

TO SECURE YOUR LILITAB YOU WILL NEED:

- ✓ Kensington compatible cable lock

PACKING LIST

INCLUDED



1 x Floor Pro Mount



1 x Foot Cover
(If ordered without Floor Base)



1 x Extension Cord



2 x MagDOCK Keys



1 x Silver L Key

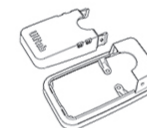


1 x Black L Key

INCLUDED IF YOU ORDERED FLOOR BASE



1 x Floor Base



1 x Base Housing



2 x M6x12mm Base Screws (short)

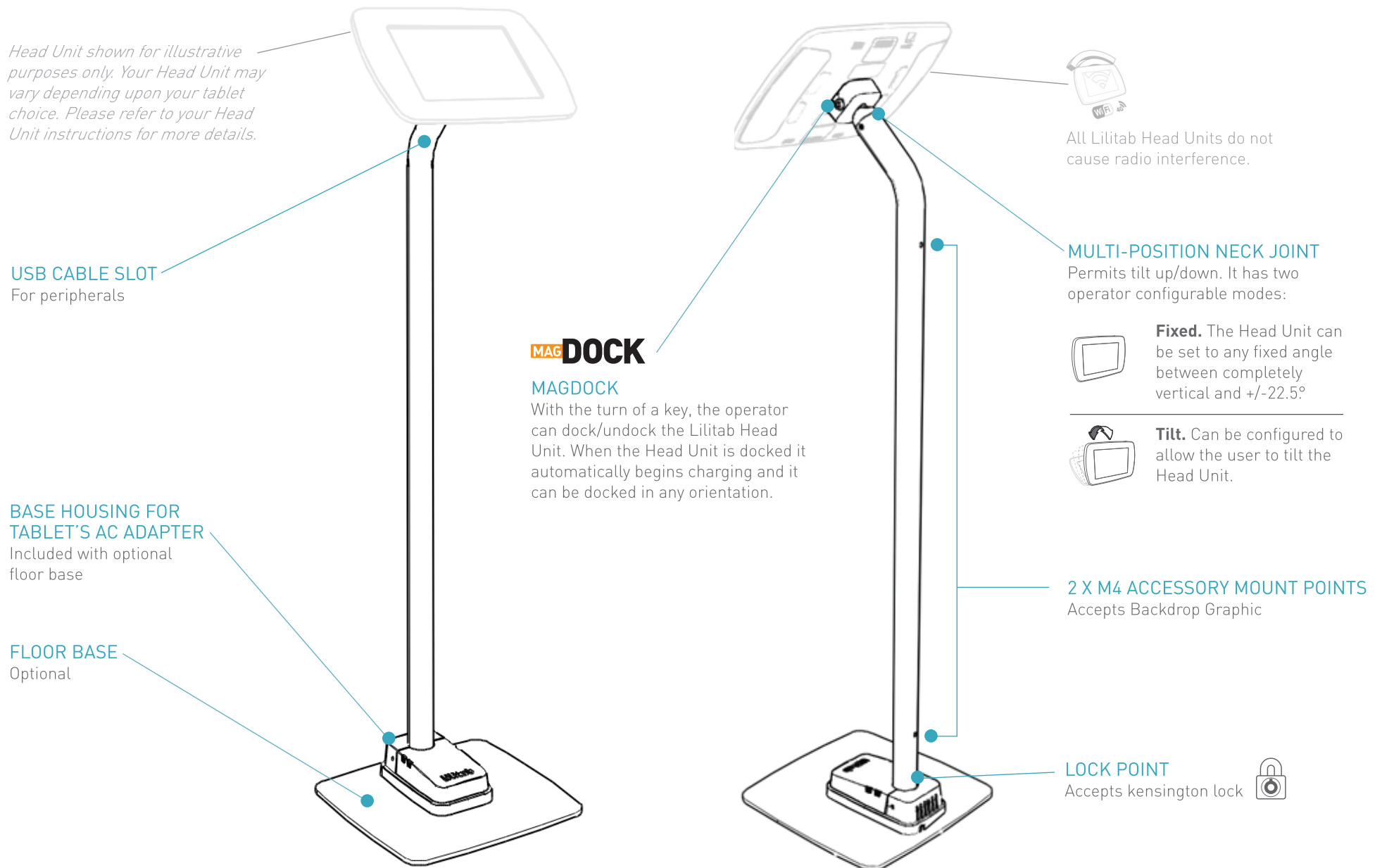


2 x M6x14mm Base Screws (long)



2 x M3x6mm Base Security Screws

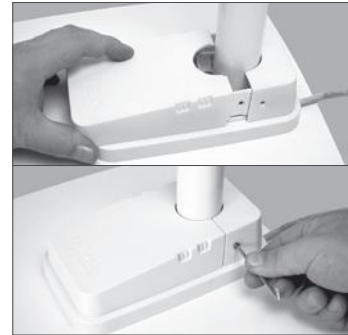
FEATURES



ASSEMBLY INSTRUCTIONS



1. **Thread the charge cable** that came with your kiosk through the top of the mount pole. Insert the mount pole into the base housing on an angle to clear the welded flange, as pictured.



4. **Attach the base housing cover** by sliding it into place. Secure it using the **two (2) M3x6mm base security screws** and **silver L key**.



2. **Attach Floor Base.** Line up the bottom of the mount pole with the four screw holes. Using the **two (2) M6x12mm short base screws**, secure through the two rear-most openings closest to the cable egress slot.



NOTE: You will need to hold the base housing up and out of your way while bolting. If not using the floor base, attach to floor surface using template on page 6, and thread the cable through your substrate.



5. **Place your Head Unit onto the MagDOCK** in either landscape or portrait orientation. **Turn the key** to lock it in place.

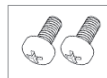
WARNING: Not locking the MagDOCK will result in the unit falling off, possibly damaging the unit and/or the tablet. The Lilitab Pro is designed to be operated with the lock closed.

Refer to your Lilitab Head Unit owner's manual for tablet installation instructions.



(iPad AC adapter shown, your AC Adapter will vary depending on your tablet.)

3. **Connect and position cables:**
 1. Connect the charge cable to the tablet's AC adapter. Then connect the adapter to the extension cord.
 2. Position both cables underneath the base housing's two plastic tabs. The extension cord should exit the rear of the housing.
 3. Screw down the base housing using the **two (2) M6x14mm long base screws**.



6. **Tilt feature.** By default the Lilitab Head Unit can be tilted by the user to suit. If you wish to disable tilt, position your head unit at the desired angle and tighten the bottom screw on the neck joint with the **black L key** provided.



KENSINGTON LOCK



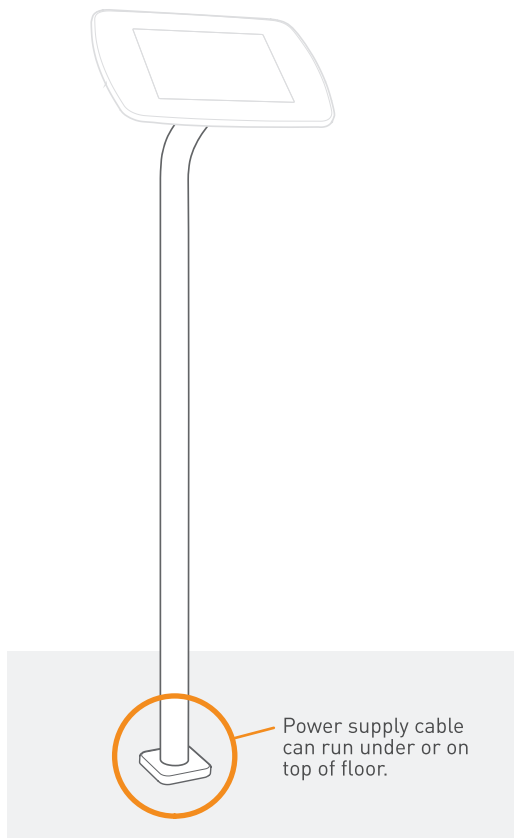
You can use the lock-point at the bottom rear of the pole to attach a Kensington Lock to secure your kiosk to a nearby stationary object.

PURCHASE OPTIONS

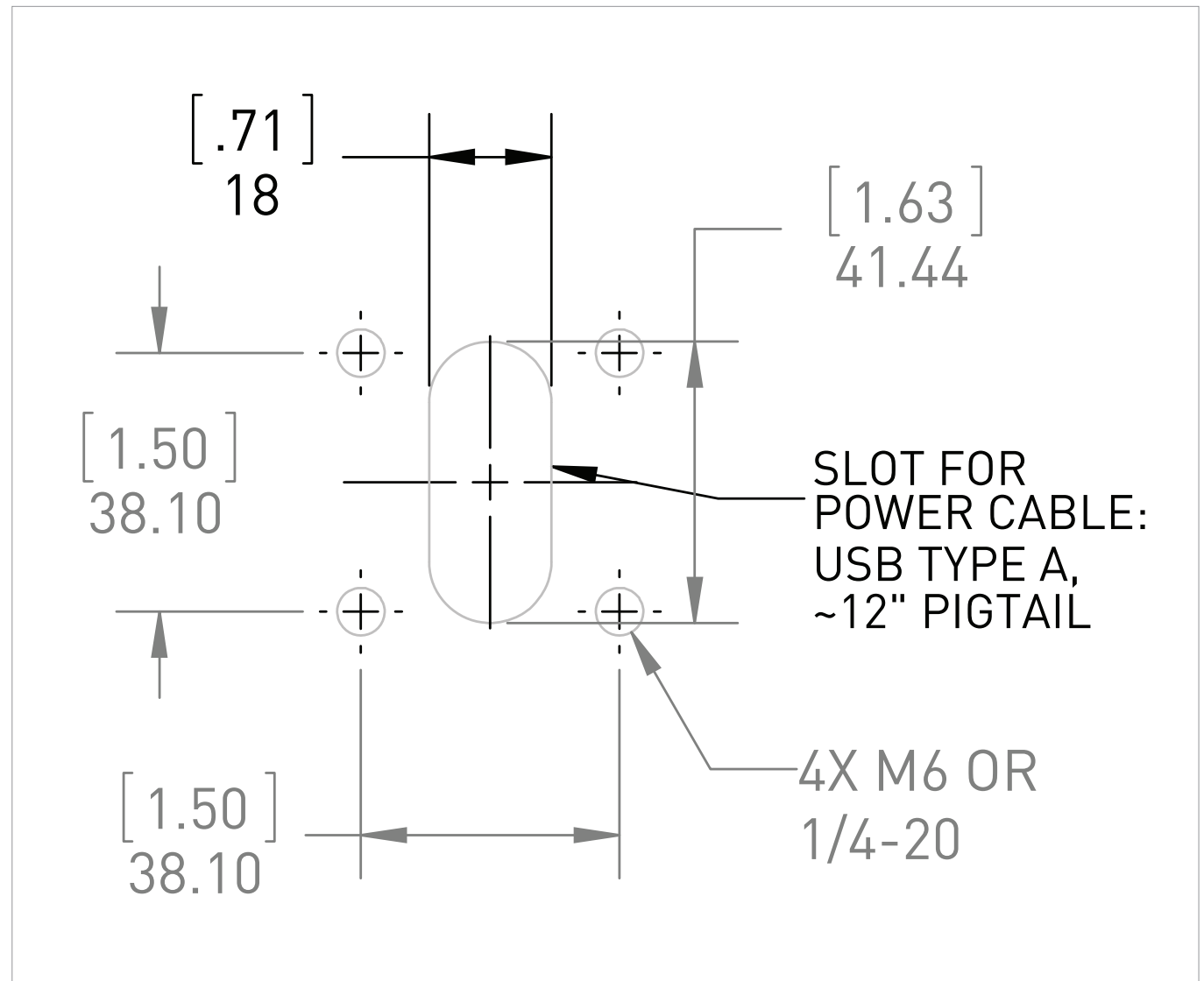
Kensington Store:
<https://bit.ly/3lVTFHe>

Amazon:
<https://amzn.to/3lWAAod>

BOLT DOWN INSTALLATION



The Lilitab Floor Pro can be mounted directly to any hard floor surface using 2 x bolts, wood screws or other fastener suitable for your floor's substrate (m6, no.14 or 1/4" diameter). Use the mounting pattern to the right for proper alignment.



Mounting pattern