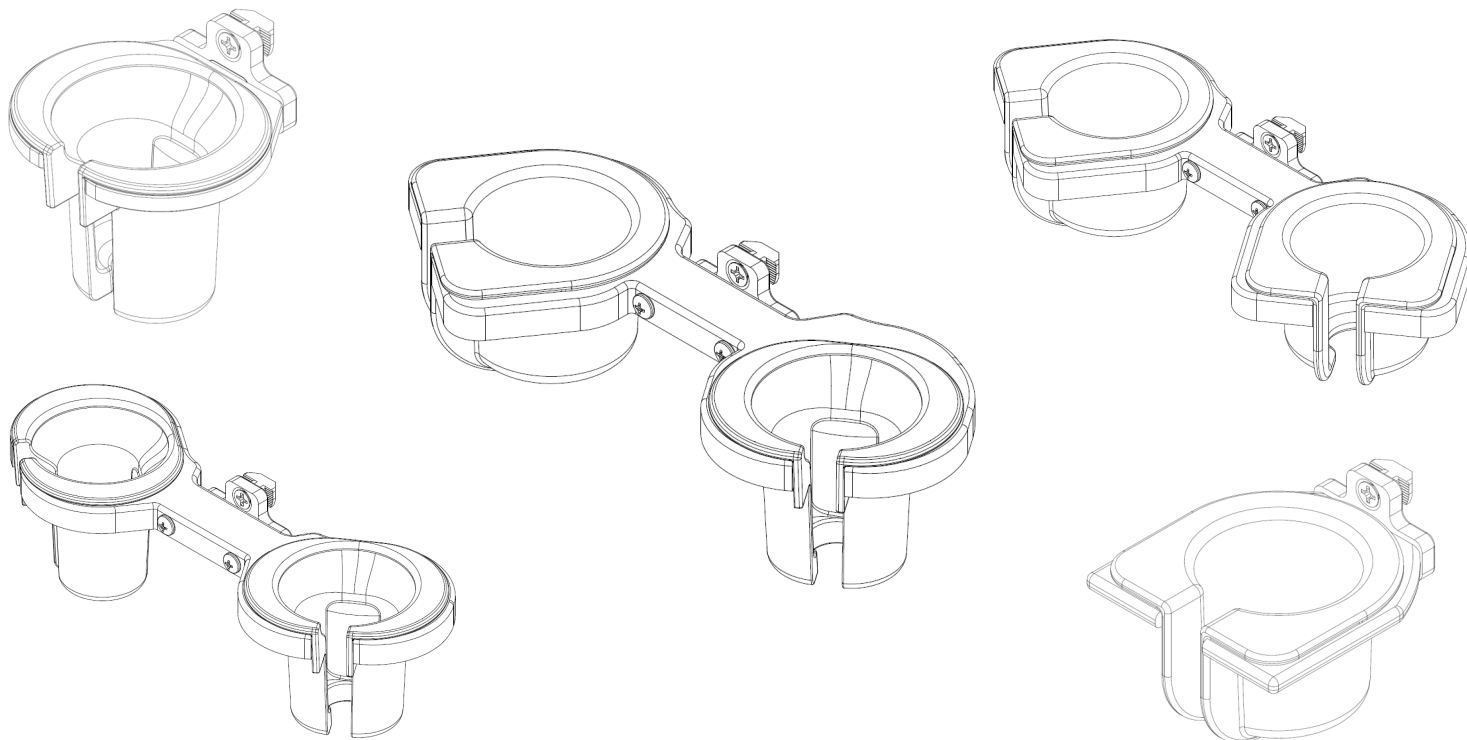


## Installation Guide

### Probe/Gel Cup Mount to Tablet Roll Stand



The purpose of this guide is to:

1. Parts Reference Table (page 1)
2. Describe attachment of Dual Probe or Gel Cup Mount to Tablet Roll stand (page 2).
3. Describe attachment of Single Probe or Gel Cup Mount to Tablet Roll stand (page 3).
4. Describe re-attachment of the Track Cover to Tablet Roll stand (page 4)
5. Routine Maintenance (page 4)

**The following parts and hardware are included in this installation kit (hardware not shown)**

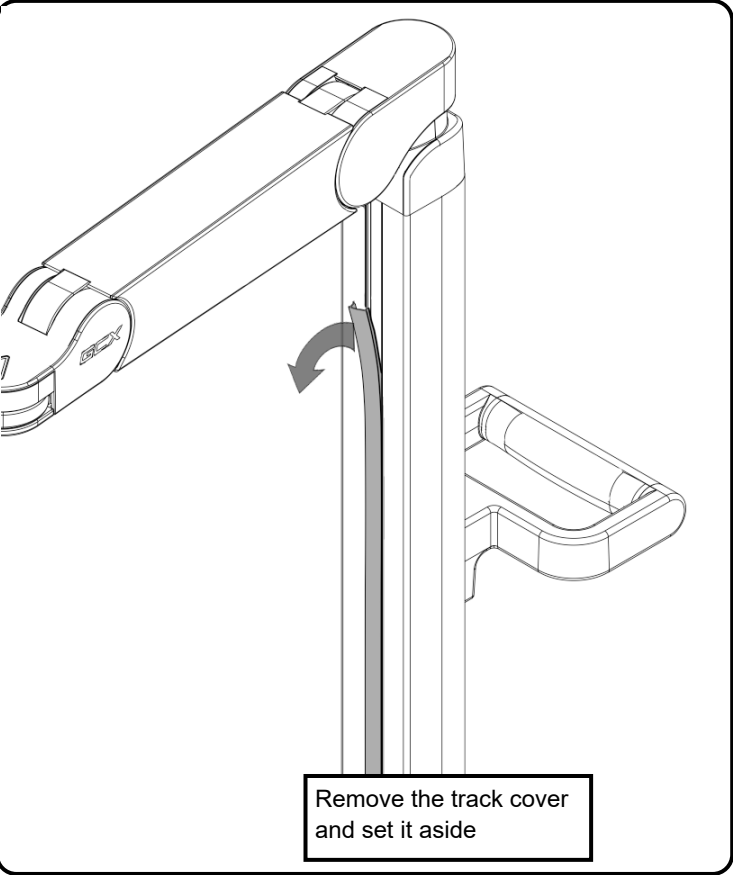
Item #	Description	Qty
1	Single or Double Probe/Gel Cup Mount with Adapter	1

#### TOOLS:

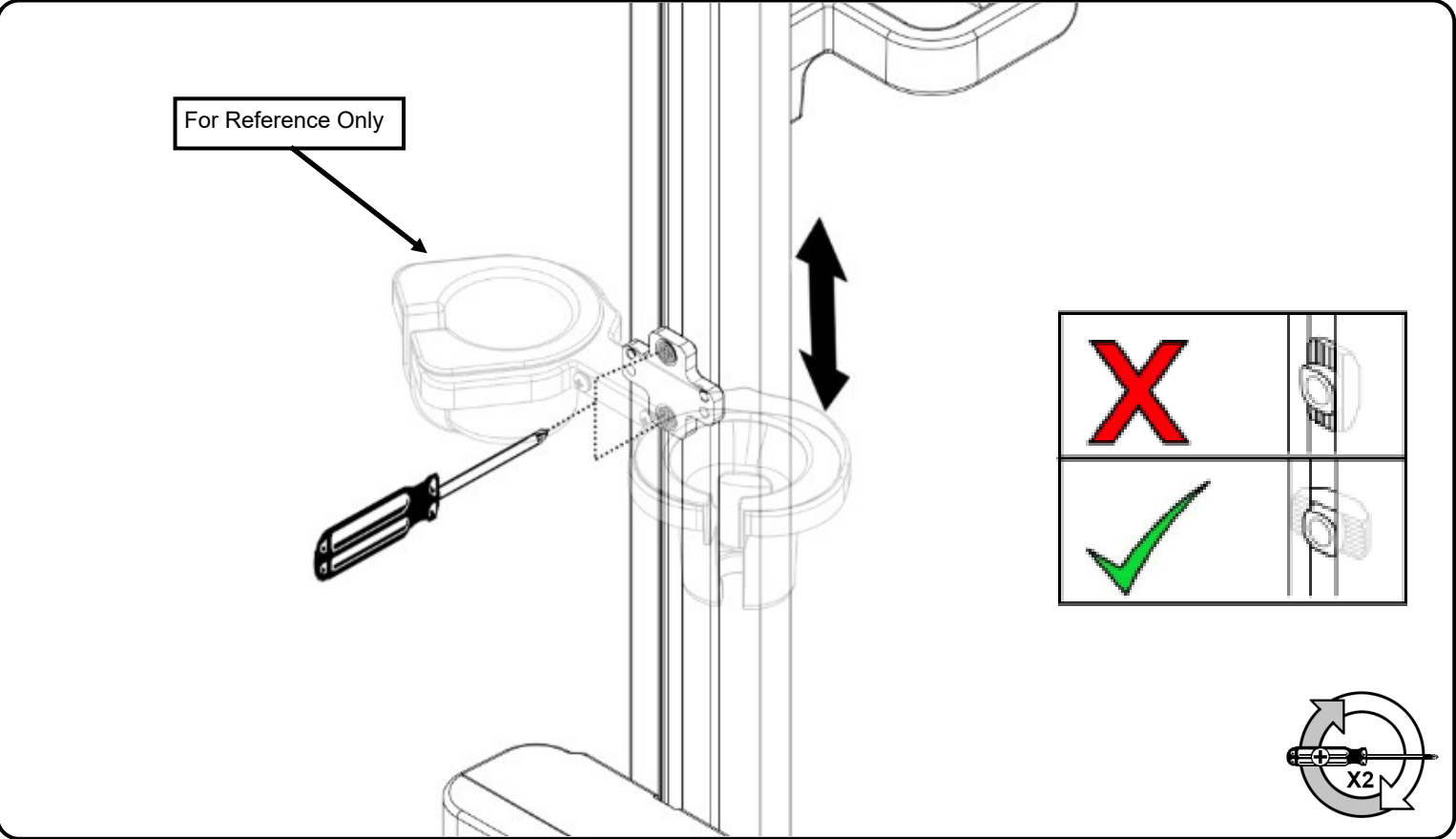
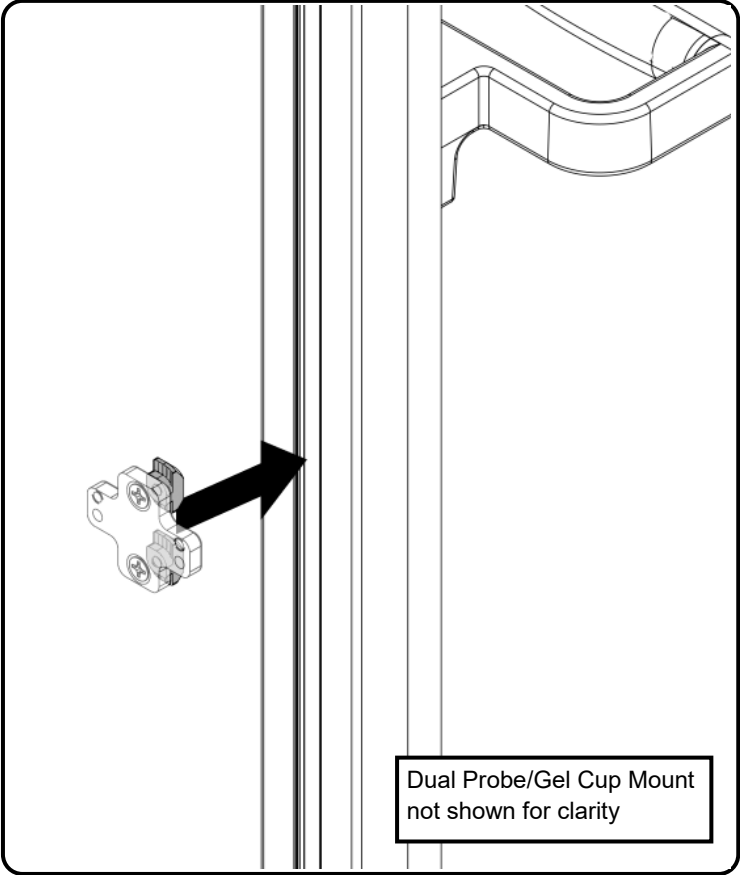
- Phillips Screwdriver (Not Provided)

Attachment of Dual Probe or Gel Mount to Column

Track Cover Removal

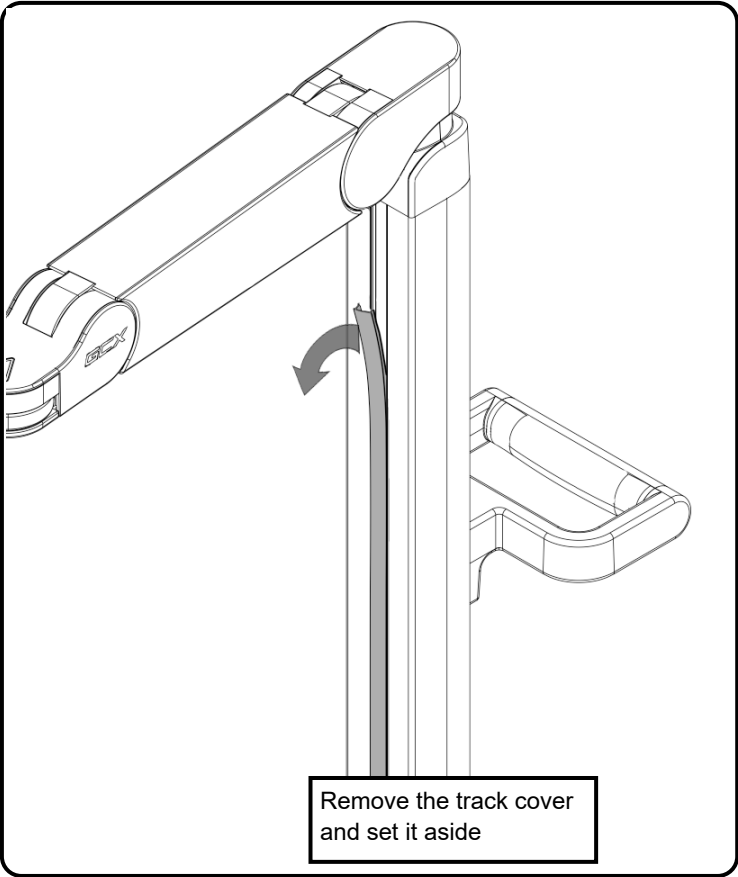


Dual Probe or Gel Mount Assembly

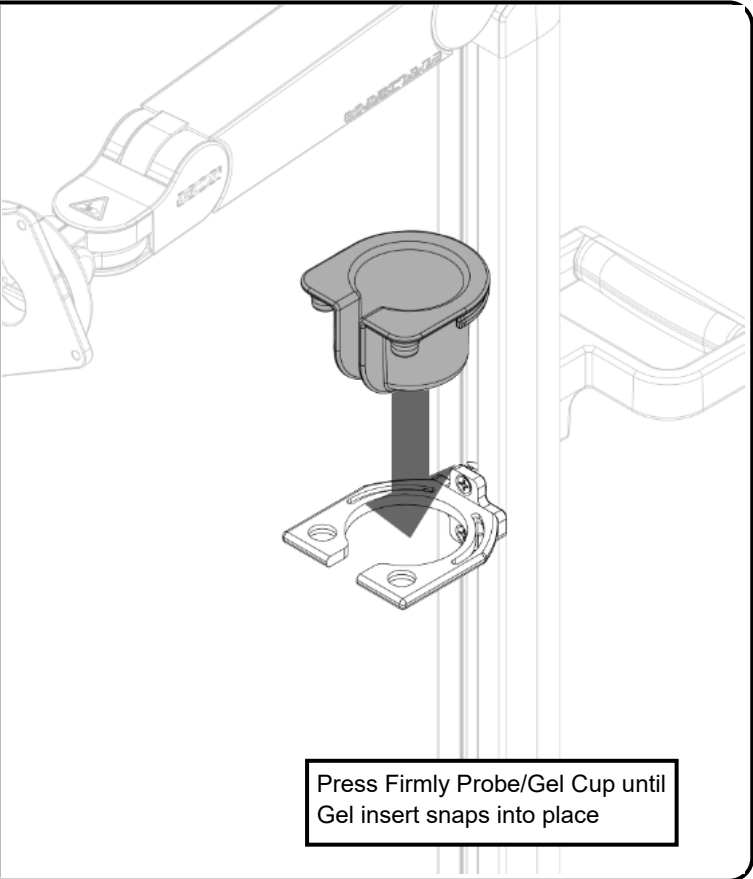
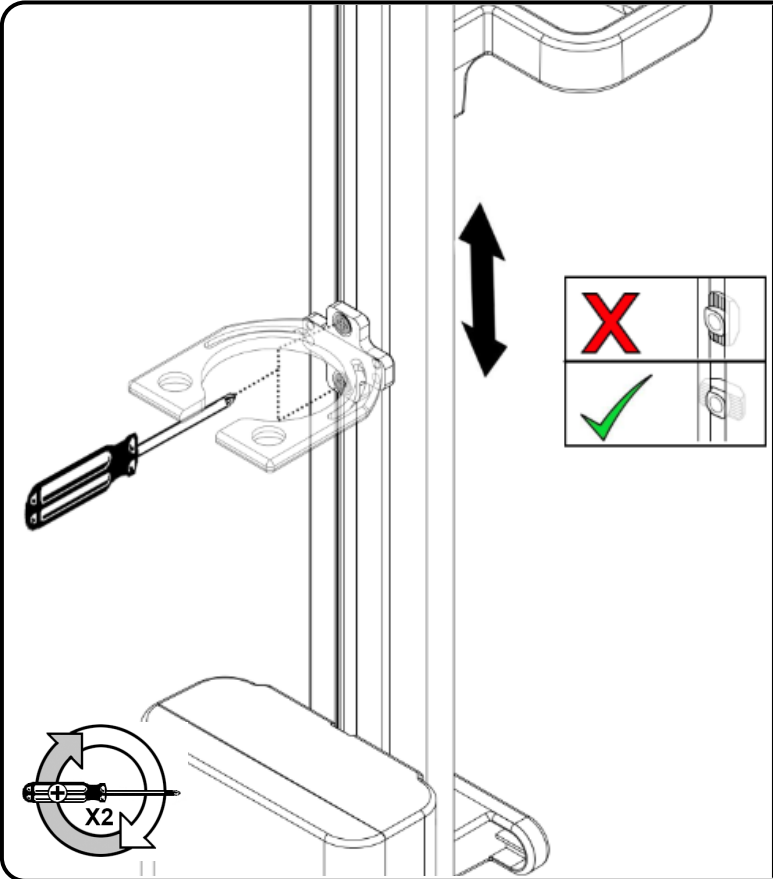
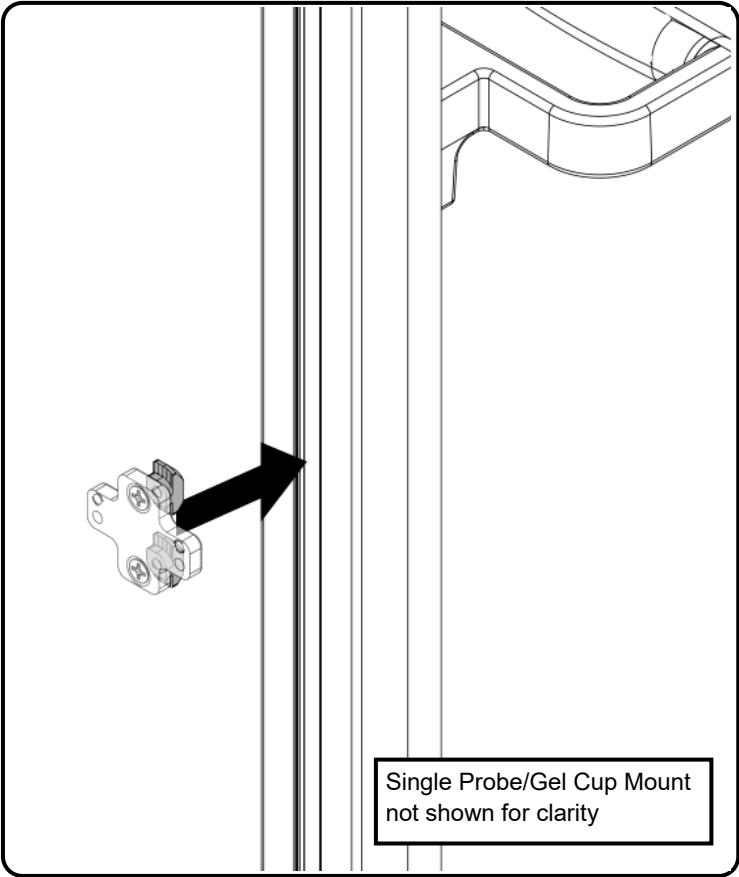


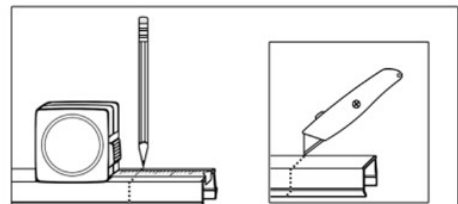
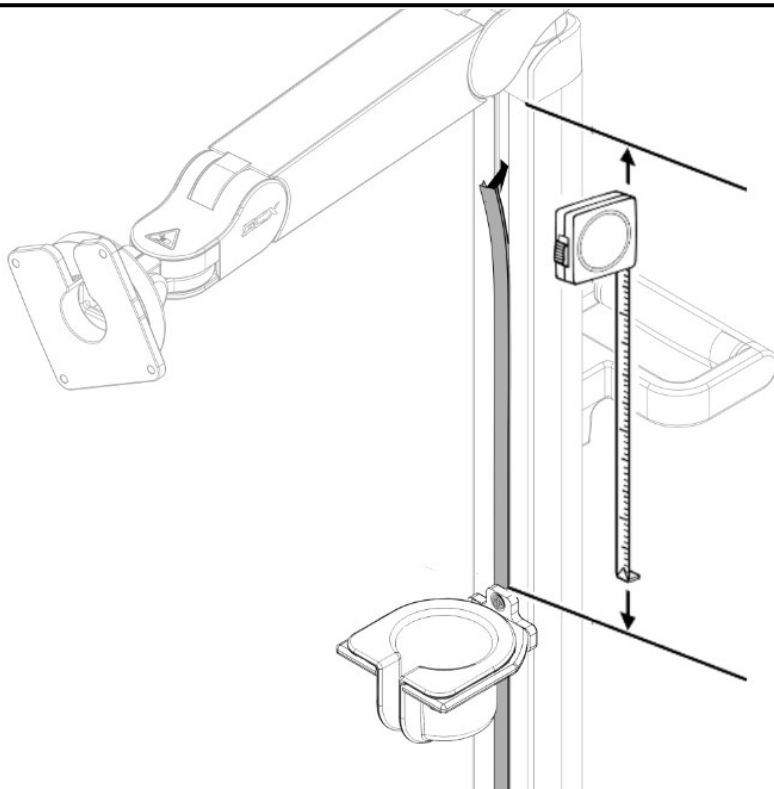
Attachment of Single Probe or Gel Mount to Column

Track Cover Removal



Single Probe or Gel Mount Assembly





Measure the open cable slot as shown and carefully cut the cable cover using a utility knife.

Re-install the track cover by pressing firmly onto track.



**CAUTION:** GCX makes no claims regarding the efficacy of the listed chemicals or processes as a means for controlling infection. Consult your hospital's infection control officer or epidemiologist. To clean or sterilize mounted devices or accessory equipment, refer to the specific instructions delivered with those products.

## Routine Maintenance

Periodically inspect all fasteners associated with the mounting assembly. Tighten or adjust as necessary for optimal operation and safety.

## Cleaning the Mounting Assembly

The mounting assembly may be cleaned with most mild, non-abrasive solutions commonly used in the hospital environment (e.g. diluted bleach, ammonia, or alcohol solutions).

The surface finish will be permanently damaged by strong chemicals and solvents such as acetone or trichloroethylene.

Steel wool or other abrasive material should never be used.

Damage caused by the use of unapproved substances or processes will not be warranted. We recommend testing of any cleaning solution on a small area of the mounting assembly that is not visible to verify compatibility.

Never submerge or allow liquids to enter the mounting assembly. Wipe any cleaning agents off the mounting assembly immediately using a water-dampened cloth. Dry the assembly thoroughly after cleaning.