



# GCX Tablet Solutions

**A cost-effective platform for patient engagement and healthcare IT**

**Keep patients connected and involved with their care**

Give patients 24x7 access to friends, family, their favorite apps—and their healthcare information. Relieve the anxiety, boredom and isolation of long hospital stays.

**Reach more patients with less effort**

Streamline nurse workflows with 'always-on' telemedicine and remote rounding capabilities; let patients help themselves to health data and common tasks.

**Reduce the footprint and cost of hospital IT**

Deploy in any room or care area, and redeploy quickly and inexpensively as needed. Support more healthcare IT workflows—from patient check-in to EHR—for less cost.

**Count on medical-grade performance and durability**

All GCX Tablet Solutions are built to last from quality materials, engineered for superior infection control, and support the latest Apple iPad, Samsung Tab and Microsoft Surface Pro models.



## Tablet Roll Stands

**Medical-grade tablet mobility for any patient room or care area**

- Strong, stable and compact: 18" x 18" footprint fits in the most crowded rooms
- Smooth-rolling casters for effortless mobility across all flooring and transitions
- Available PRO-ADJUST™ tablet arm enables simple, secure height and position adjustment for optimal viewing angle
- Locking power box secures AC adapter or USB hub to prevent accidental unplugging or disconnection
- Up to 100% cable concealment for safety and infection control
- 15' medical-grade power cord for on-cart tablet recharging
- Accessories include speaker mounts, storage bins, more

*Tablet enclosure sold separately. Tablet not included.*

## Patient Engagement Overbed Table

**Patient engagement in every patient's reach**

- Articulating PRO-ADJUST™ tablet arm for simple, stable, secure tablet positioning (folds quickly out of the way during emergencies or when not in use)
- Auto-rise feature eases table height adjustment and prevents injuries
- Smooth-rolling casters for easy mobility (no skidding)
- Low-profile base fits easily under most beds
- Built-in USB C and A charging ports—patients won't unplug important medical equipment to charge the tablet
- Integrated tabletop bumper/spill guard; 6 tabletop color options
- Available in full-sized (31"W x 19"D) or compact (22"W x 19.25"D) tabletop models

*Tablet enclosure sold separately. Tablet not included.*



# Patient Tablet Arm

## Equip any room for patient tablet access

- Mounts on wall or headwall and extends over bed—a zero-footprint solution
- Long (Available with 45" or 60") reach for easy patient access in bed or sitting
- Pivoting wall mount, articulated arm and tablet swivel/tilt enable comfortable viewing and from virtually any angle
- Durable aluminum construction; fully concealed cables
- Holds Apple iPad, Samsung Tab and Microsoft Surface Pro tablets, plus LG LU766A Touchscreen TV

*Handle optional. Tablet enclosure sold separately.  
Tablet or touchscreen TV not included.*



# Tablet Medical Carts

## Compact, configurable mobile tablet workstations

- Light weight but heavy-duty—98% metal by weight, but starts at just 27 lbs.
- All metal surfaces finished with a high-gloss antimicrobial powder coat that withstands chemical and UV/C disinfection
- Comfort Glide™ Lift Technology for instant, silent, one-handed sit-to-stand height adjustment
- 13.1" x 12.75" worksurface; compact 15.75"W x 18.5"L x 6"H base
- Available options accessories include wire baskets, storage drawer, wipes holder, keyboard tray, more

*Tablet enclosure sold separately. Tablet not included.*

# Variable Height Wall Arms for Tablets

## Put tablets wherever nurses and clinicians need them

- Space-saving design—always in reach but never in the way
- 12" vertical adjustment range; 180-degree pivot at wall
- Portrait-to-landscape tablet rotation (with lockout)  
plus tablet pan and tilt adjustments
- Maximum reach 21.7" to 24.2" (15.1" to 17.6" without extension)

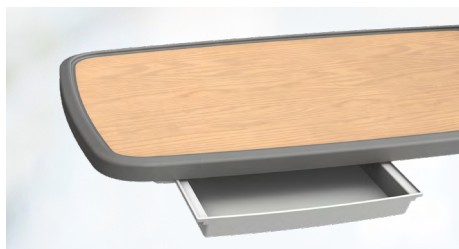
*Tablet enclosure sold separately. Tablet not included.*



## Popular Accessories



Cup Holder (for Table)



Patient Storage Drawer (for Table)



USB A/USB C Charging Port  
(for Roll Stand, Table)



Wire baskets  
(for Cart, Roll Stand)



Wipes holder  
(for Cart)



ClearView Storage drawer  
(for Cart)



Barcode Scanner mount  
(for Cart)



[sales@gcx.com](mailto:sales@gcx.com)

3875 Cypress Drive  
Petaluma, California 94954  
800.228.2555

140 Constitution Blvd.  
Franklin, MA 02038  
800.649.2278