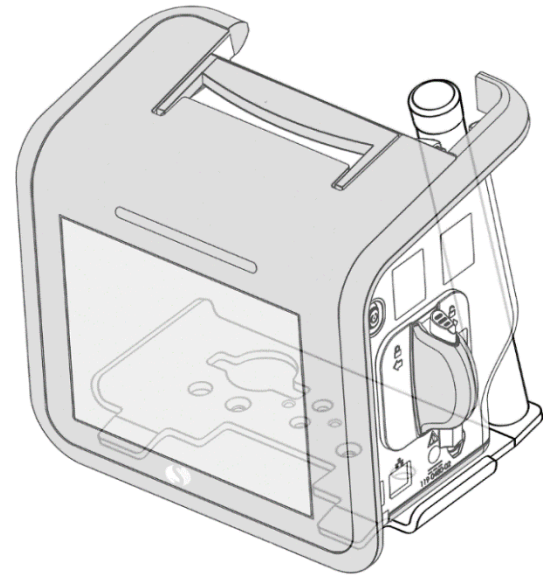


Installation Guide

SpaceLabs Qube[®] Mini Mounting Adapter



The purpose of this guide is to describe:

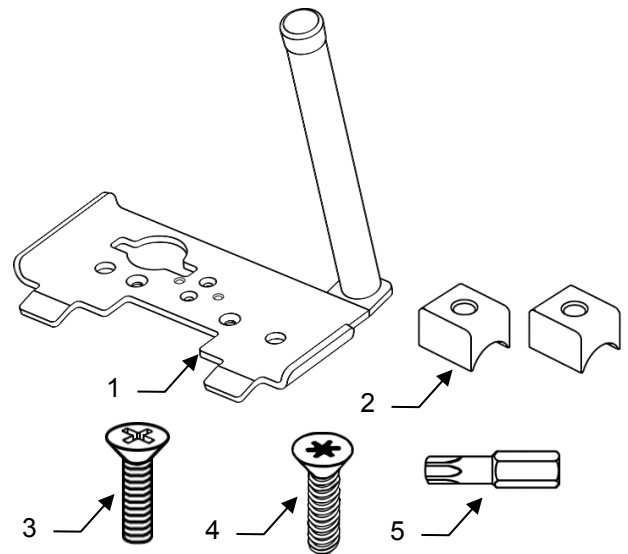
1. Attaching Mounting Adapter to Roll Stand (page 2).
2. Attaching Mounting Adapter to GCX Support Arms (page 3).
3. Adjusting Tilt Tension (page 5).
4. Routine Maintenance (page 5).
5. Cleaning the Mounting Assembly (page 5).

Installation Note: Qube Mini Adapter Plate (SL-0087-16) is to be mounted on the 016-0938-00 (SL-0084-07), 016-0939-00 (SL-0084-06), or the 016-0823-00 (SL-0080-61) Roll Stand.

Parts Reference

The following parts and hardware are included with this installation kit.

Item #	Description	Qty
1	Mounting Adapter	1
2	Bar Spacer	2
3	10-32 x 3/4" Flat Head Machine Screw (FHMS)	2
4	1/4-10 x 1" Flat Head Torx Screw (FHTS)	2
5	T30 Torx Bit 1/4" Drive	1



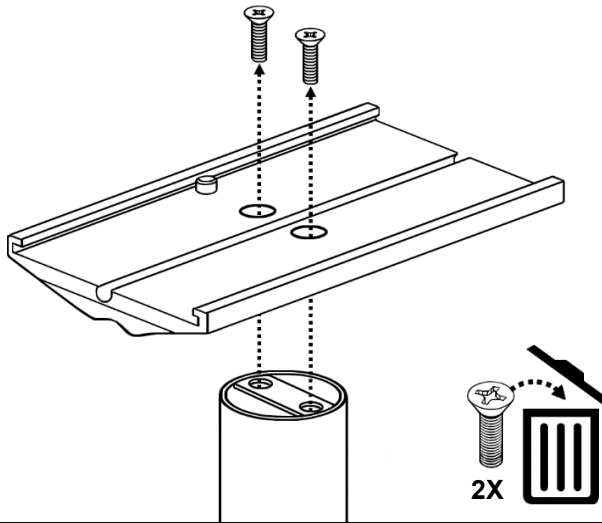
Tools Required

Roll Stand - Phillips screwdriver (not provided)

GCX Support Arm – T30 Torx Bit (provided), and a screw gun that accepts 1/4-inch hex shank driver bits.

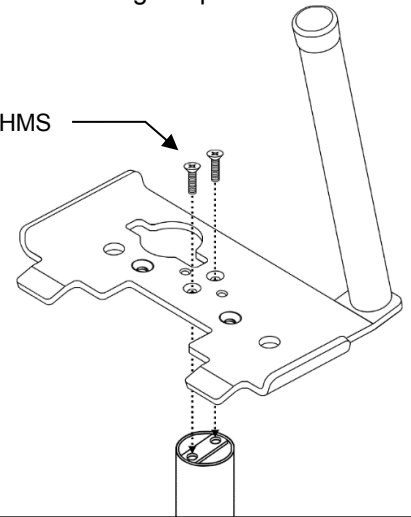
Attaching Mounting Adapter to Roll Stand

1. Using a Phillips screwdriver, remove and discard the (2) screws and mounting plate as shown.

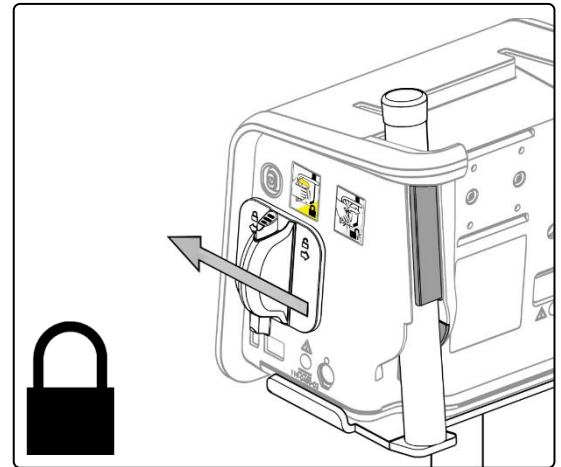
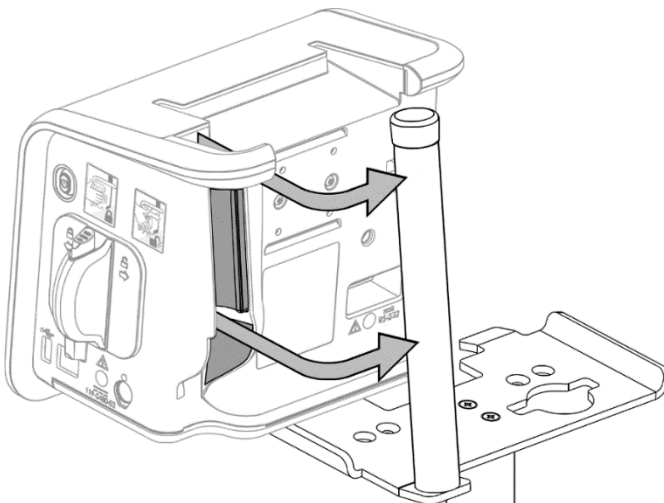


2. Install the Qube Mini mounting adapter with (2) 10-32 x 3/4" FHMS. Using a Phillips screwdriver, alternately tighten screws until mounting adapter is secure.

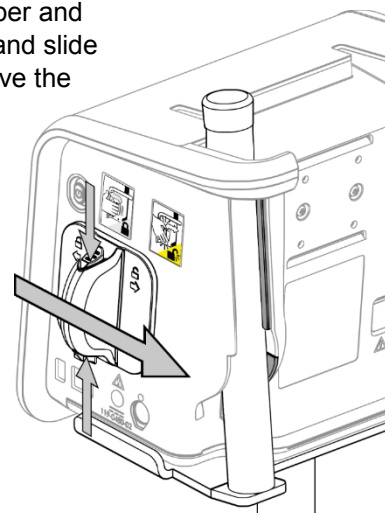
(2) 10-32 x 3/4" FHMS



3. Hook the clamping mechanism on the Qube Mini around the adapter plate post and slide it down making sure it is resting on the adapter plate. Pull clamping lock forward as shown (below right) to secure. Refer to SpaceLabs Qube Mini product manual for additional information.



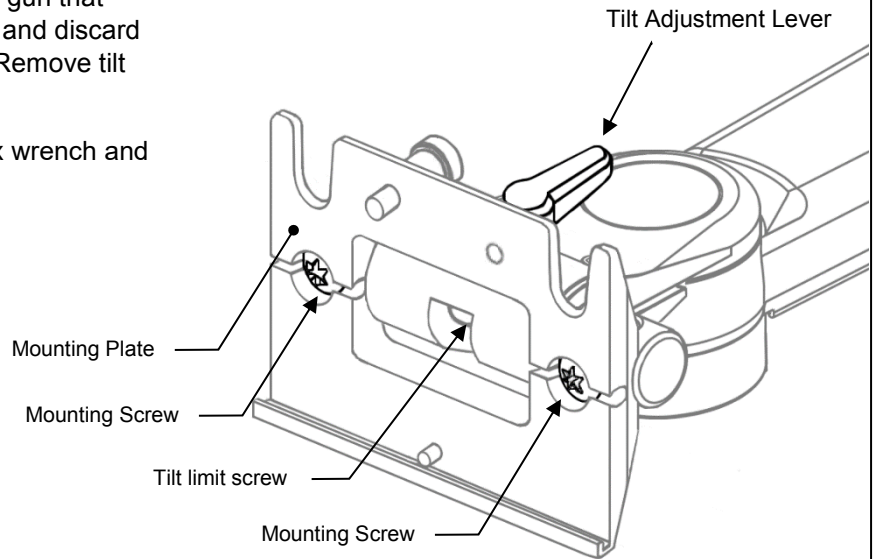
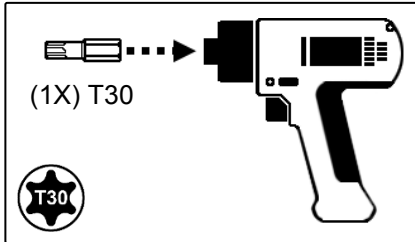
4. To remove the Qube Mini, depress both upper and lower buttons on the clamping mechanism and slide it towards the back as shown. Lift and remove the device.



Attaching Mounting Adapter to GCX Support Arm

1. Using the T30 Torx bit (provided) and a screw gun that accepts 1/4-inch hex shank driver bit, remove and discard the (2) mounting screws and mounting plate. Remove tilt adjustment lever.

If a tilt limiting screw is present, use a 1/4" hex wrench and remove it.



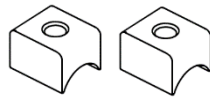
2. Rotate the 4" bar 90° so the (2) mounting holes are facing up as shown. Attach the mounting adapter to the 4" bar with (2) 1/4"-10x1" FHTS and (2) bar spacers. Make sure to start the screws by hand taking care not to cross thread them. Once the screws have been started, alternately tighten them with the T30 Torx bit (provided), and a screw gun that accepts 1/4-inch hex shank driver bits. Tighten until the mounting plate is secure. Final torque needs to be 100-150 in-lbs.



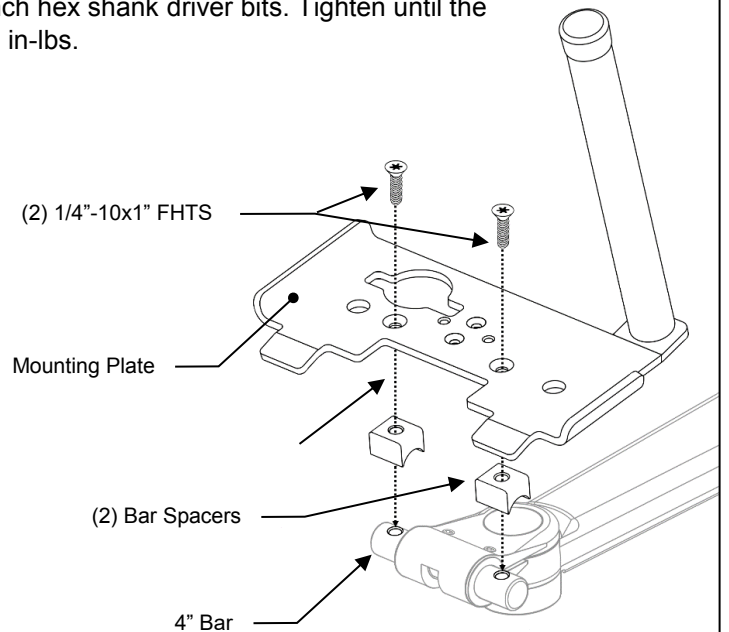
Torque 100-150 in-lbs.



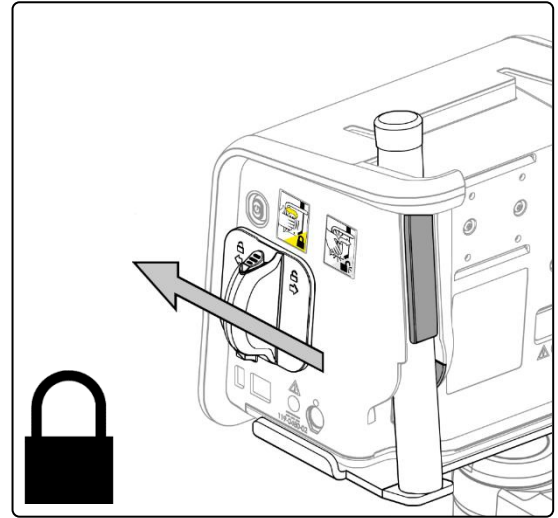
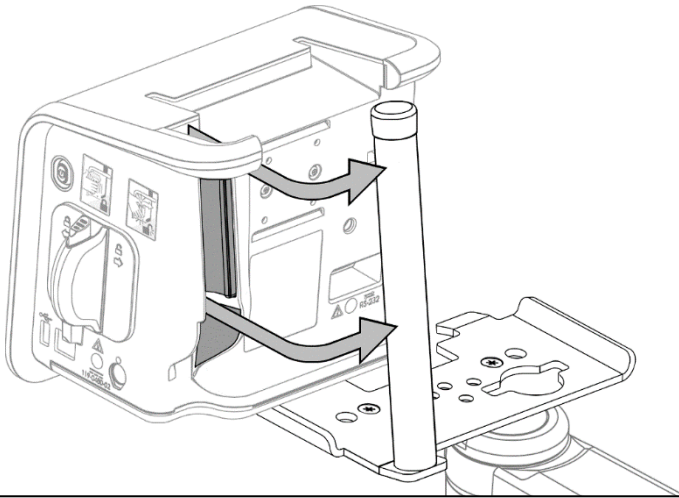
(2X) 1/4-10 x 1" FHTS



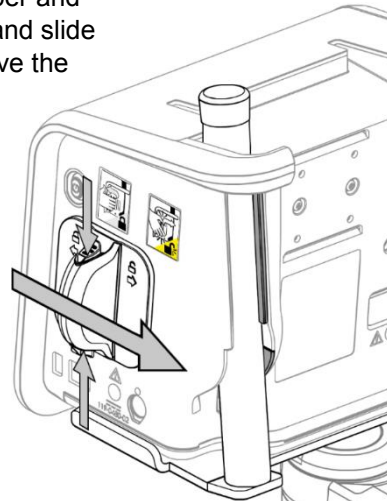
(2X) Bar Spacer



3. Hook the clamping mechanism on the Qube Mini around the adapter plate post and slide it down making sure it is resting on the adapter plate. Pull clamping lock forward as shown (below right) to secure. Refer to SpaceLabs Qube Mini product manual for additional information.

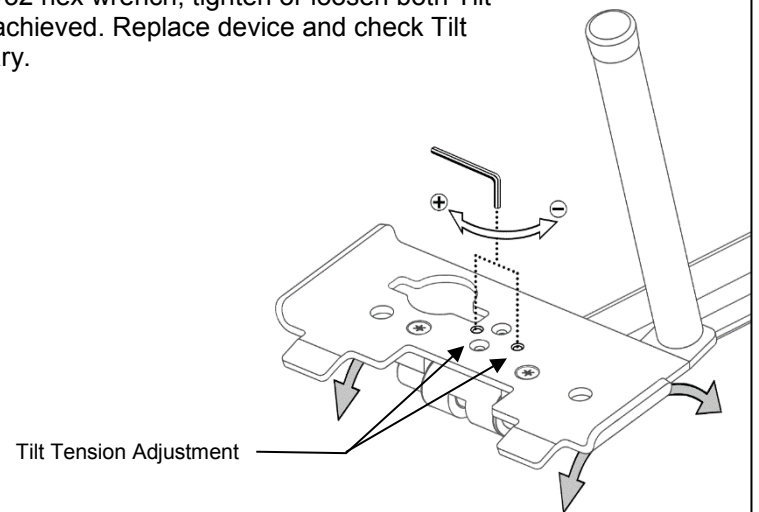


4. To remove the Qube Mini, depress both upper and lower buttons on the clamping mechanism and slide it towards the back as shown. Lift and remove the device.



Adjusting Tilt Tension

1. Adjustment is performed with device removed. Using a 5/32 hex wrench, tighten or loosen both Tilt Tension Adjustment Screws until desired Tilt Tension is achieved. Replace device and check Tilt Tension after adjustment is made and repeat as necessary.



Routine Maintenance

Periodically inspect all fasteners associated with the mounting system. Tighten or adjust fasteners as necessary for optimal operation and safety.

Cleaning the Mounting Assembly

1. The mounting assembly may be cleaned with most mild, non-abrasive solutions commonly used in the hospital environment (e.g. diluted bleach, ammonia, or alcohol solutions).
2. The surface finish will be permanently damaged by strong chemicals and solvents such as acetone or trichloroethylene.
3. Do not use Steel wool or other abrasive material.
4. Damage caused by the use of unapproved substances or processes will not be warranted. It is recommended that you test any cleaning solution on a small area of the mounting assembly that is not visible to verify compatibility.
5. Never submerge or allow liquids to enter the mounting assembly. Wipe any cleaning agents off of the assembly immediately, using water dampened cloth. Dry the assembly thoroughly after cleaning.

CAUTION: GCX makes no claims regarding the efficacy of the listed chemicals or processes as a means for controlling infection. Consult your hospital's infection control officer or epidemiologist. To clean or sterilize mounted devices or accessory equipment, refer to the specific instructions delivered with those products.