

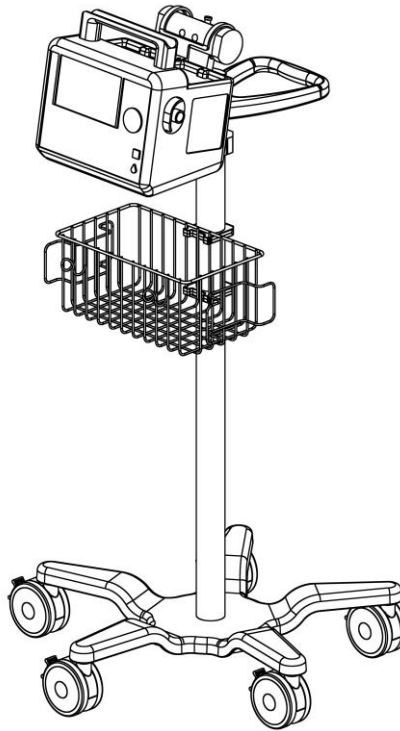
Installation Guide

Philips Efficia DFM100 / Efficia Heartstart / Philips Heartstart Intrepid Roll Stand

(Refer to qualified personnel)

Purpose:

To describe the assembling of the Efficia DFM100 / Efficia Heartstart / Philips Heartstart Intrepid Roll Stand



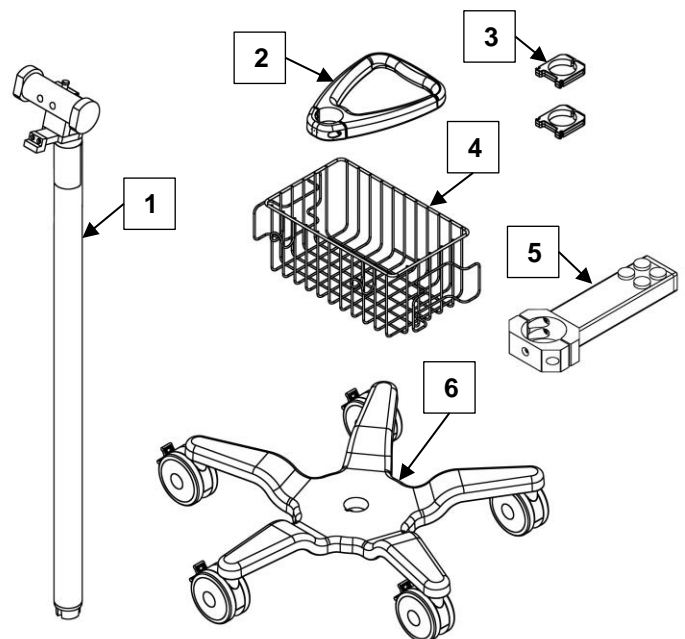
Parts Reference

The following parts and hardware are included in this installation kit:

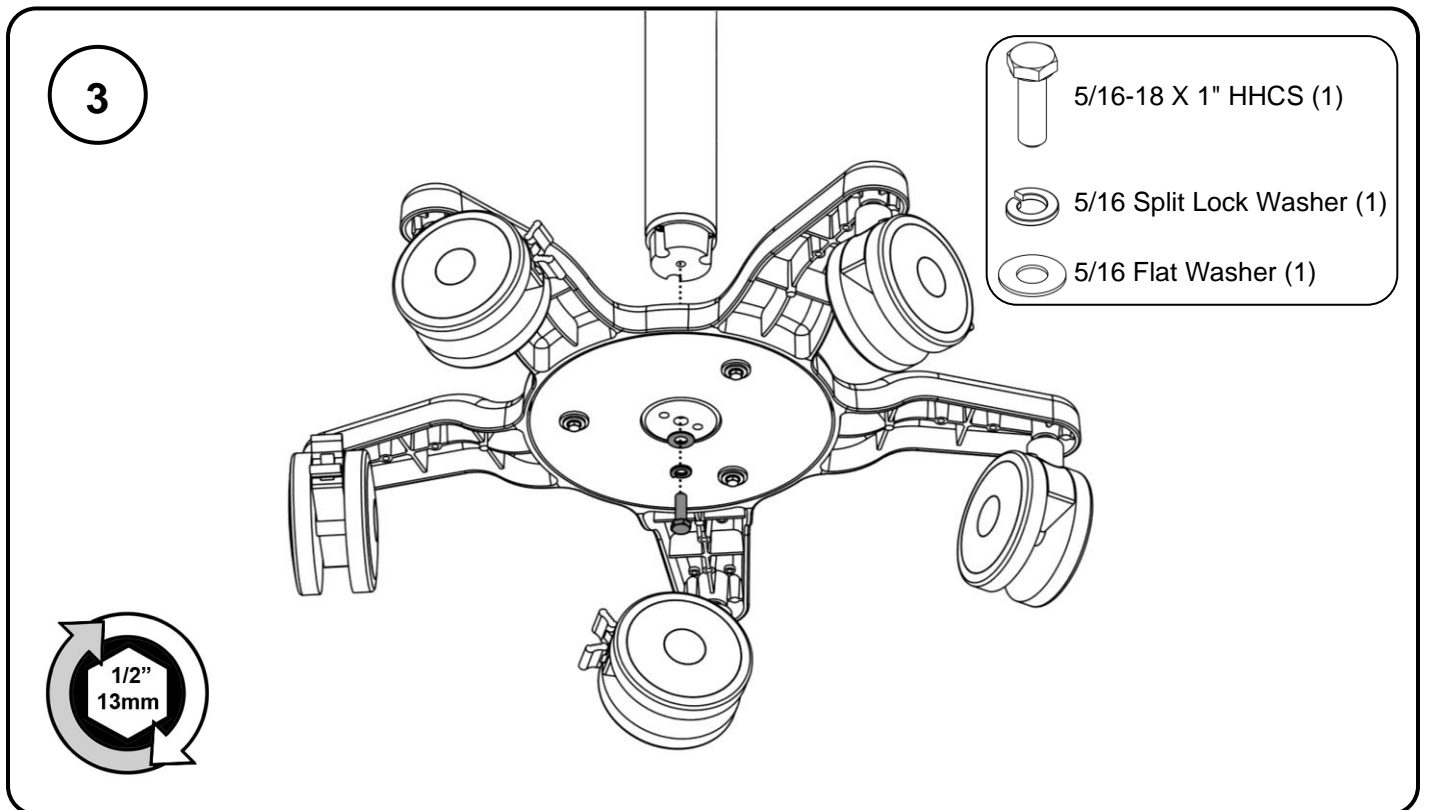
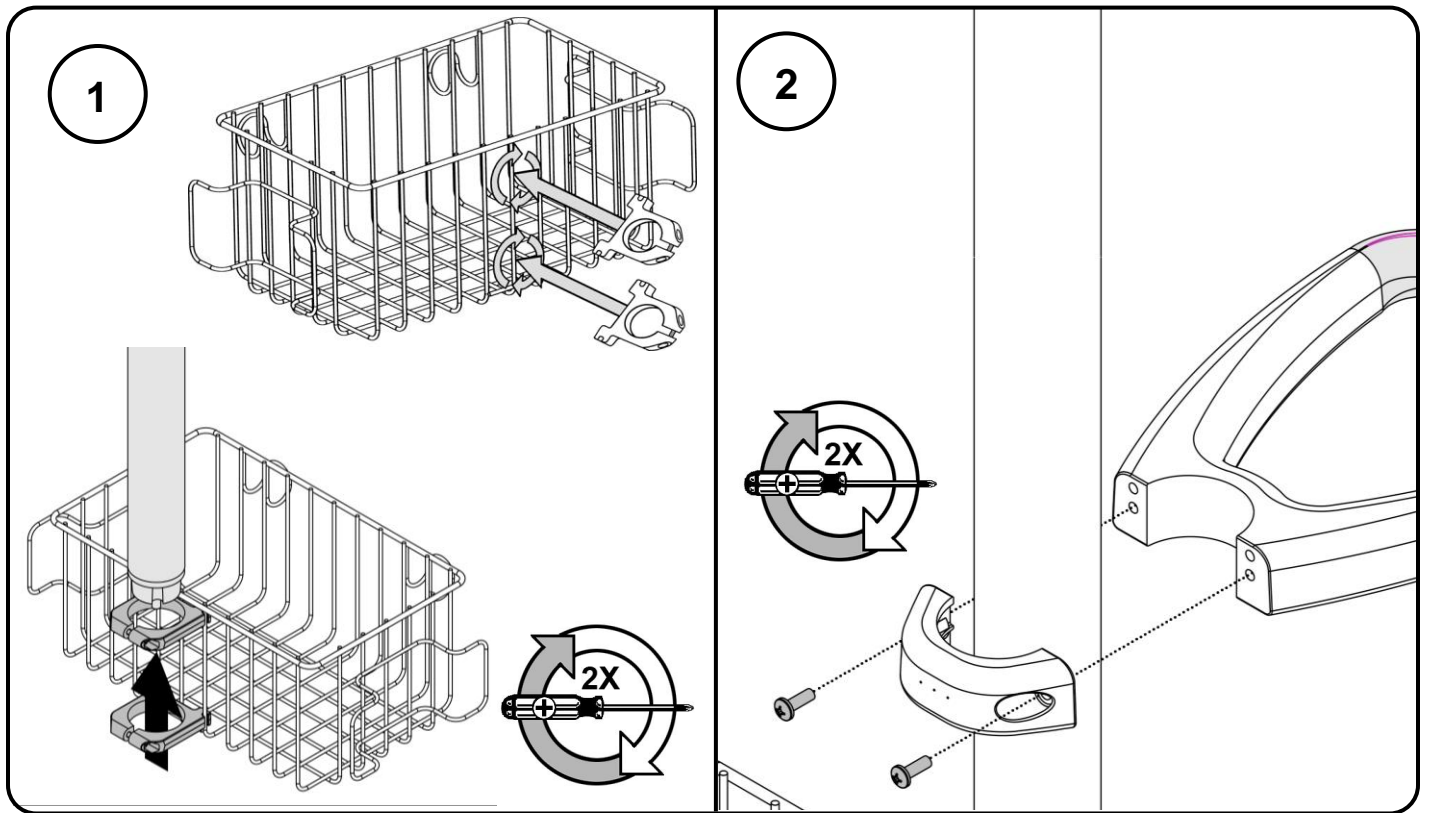
Item #	Description	Qty.
1	Roll Stand Post, 40" with Defibrillator Mount	1
2	Handle	1
3	Basket Clips	2
4	Utility Basket	1
5	Support Arm	1
6	Roll Stand Base	1
7	1/2" (13mm) Socket Wrench (not shown)	1
8	5/16 Flat Washer (not shown)	1
9	5/16 Split Lock Washer (not shown)	1
10	5/16-18 x 1" Hex Head Cap Screw (HHCS) (not shown)	1
11	10-32 x 7/16" Flat Head Machine Screw (FHMS) (not shown)	1

Tools Required:

- 1/2" (13mm) Socket Wrench (Provided)
- 3/16" Hex Wrench (Provided)
- Phillips Screwdriver (Not provided)
- Pry tool (Not provided)

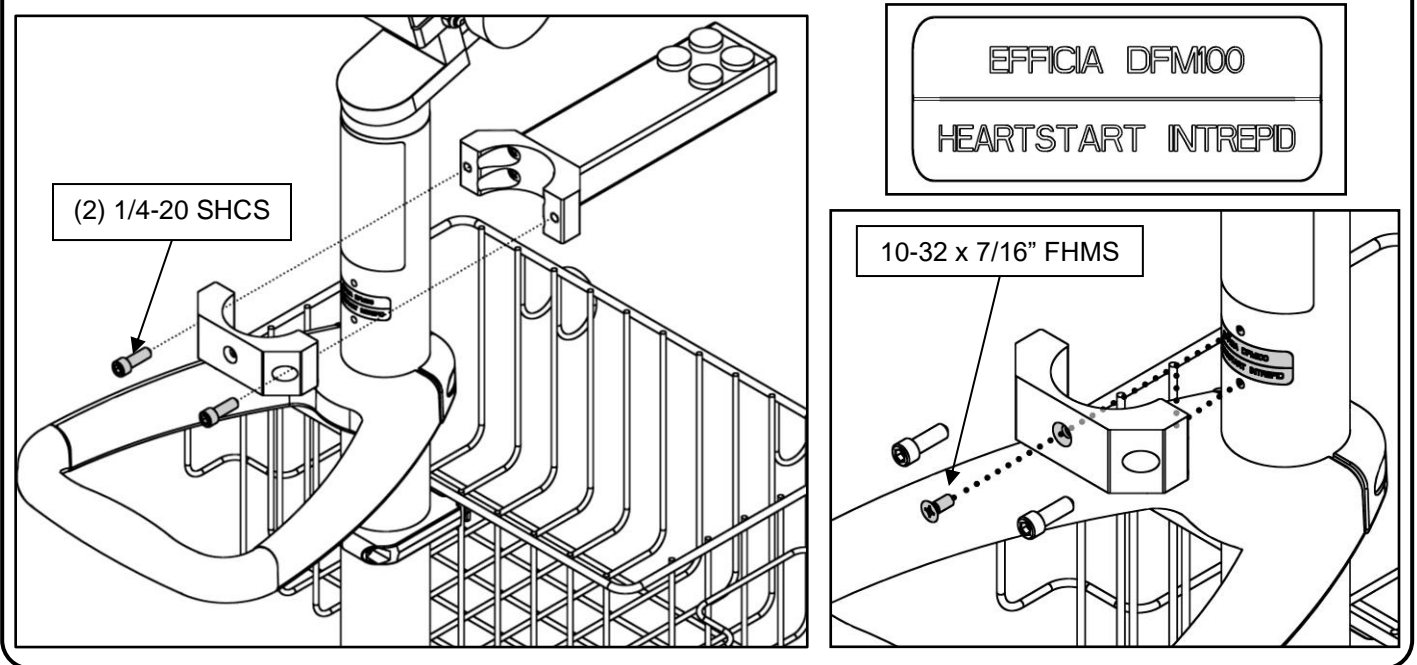


Preparing the Roll Stand

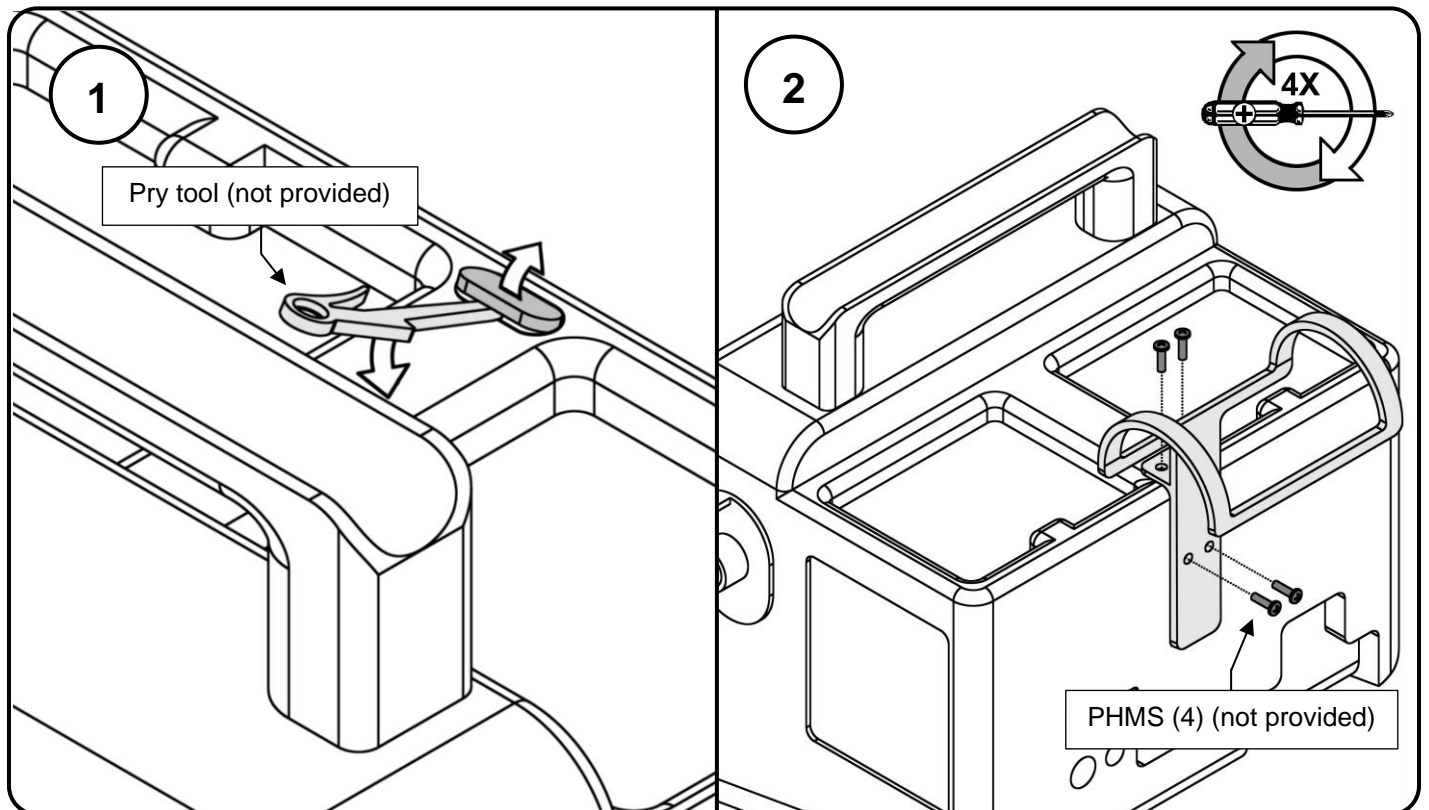


Installing Support Arm

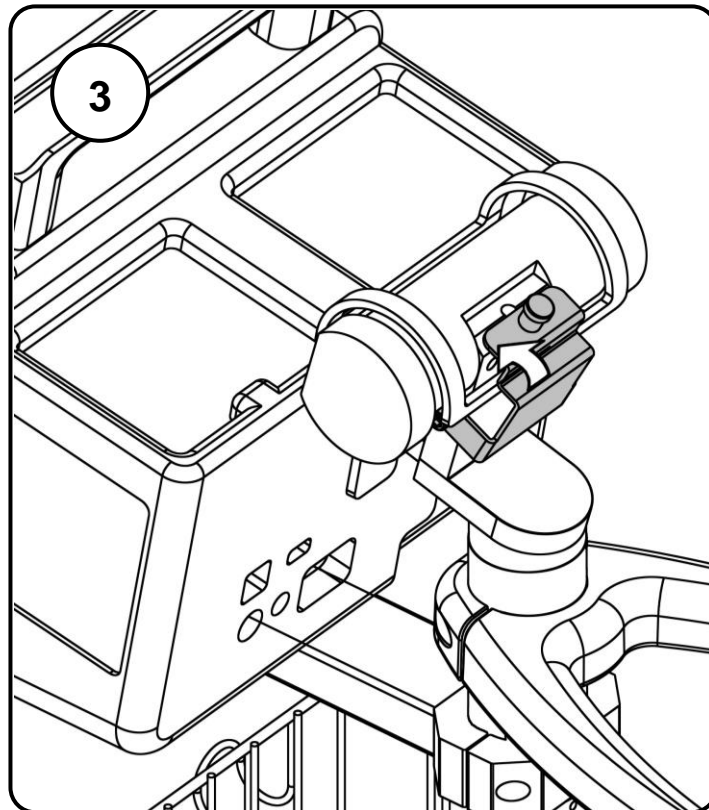
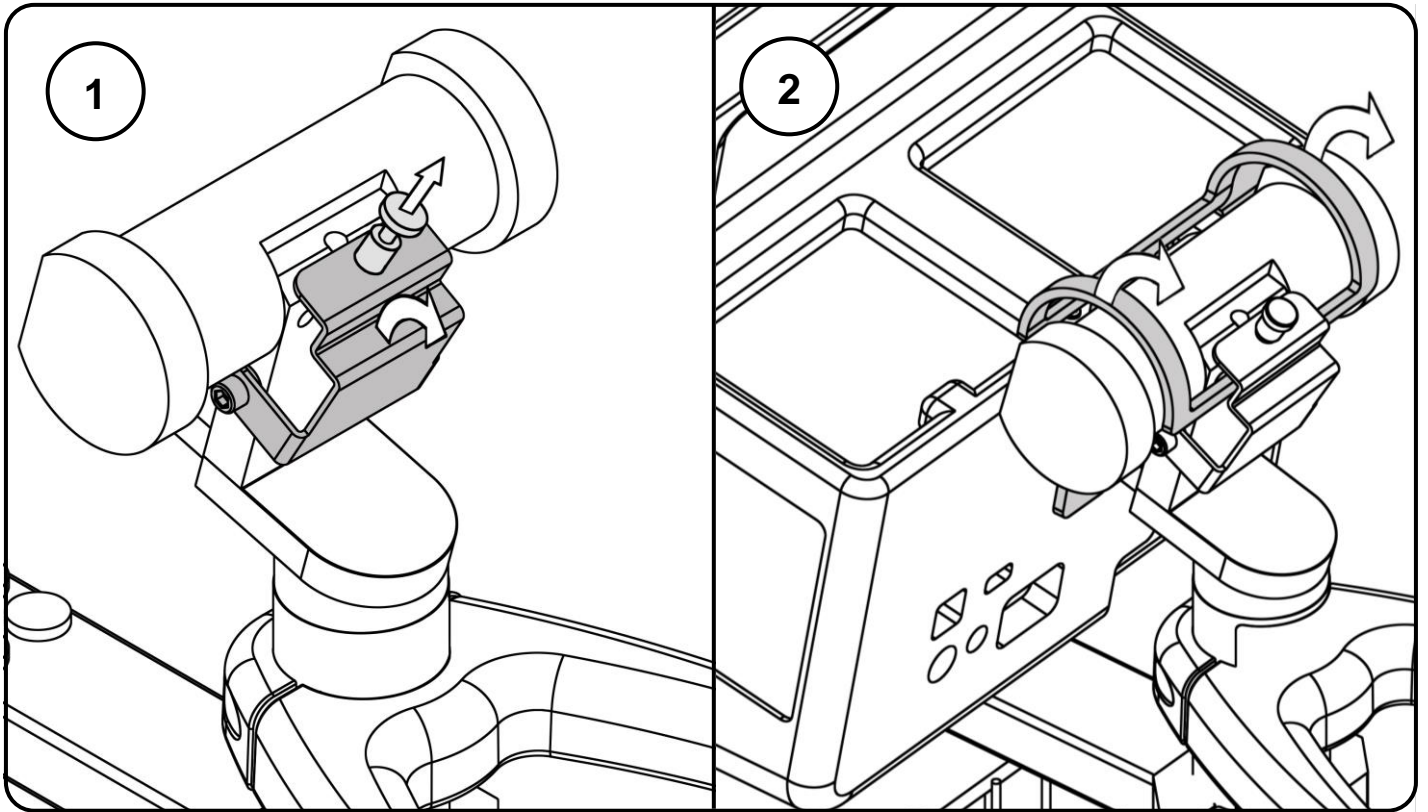
Using a 3/16" hex wrench, install the Support Arm with the (2) 1/4-20 SHCS (included with support arm) at the desired position. Determine the desired position by using the 10-32 x 7/16" FHMS and label as a reference point.



Preparing the Defibrillator



Installing the Defibrillator



Routine Maintenance

Periodically inspect all fasteners associated with the mounting assembly. Tighten or Adjust as necessary for optimal operation and safety.

Cleaning the Mounting Assembly

The mounting assembly may be cleaned with most mild, non-abrasive solutions commonly used in the hospital environment (e.g. diluted bleach, ammonia, or alcohol solutions).

The surface finish will be permanently damaged by strong chemicals and solvents such as acetone or trichloroethylene.

Steel wool or other abrasive material should never be used.

Damage caused by the use of unapproved substances or processes will not be warranted. We recommend testing of any cleaning solution on a small area of the mounting assembly that is not visible to verify compatibility.

Never submerge or allow liquids to enter the mounting assembly. Wipe any cleaning agents off the mounting assembly immediately using a water-dampened cloth. Dry the assembly thoroughly after cleaning.



CAUTION: GCX makes no claims regarding the efficacy of the listed chemicals or processes as a means for controlling infection. Consult your hospital's infection control officer or epidemiologist. To clean or sterilize mounted devices or accessory equipment, refer to the specific instructions delivered with those products.