

Installation Guide

6" E-Series Arm Wall Mount Kit for Philips SureSigns Monitors

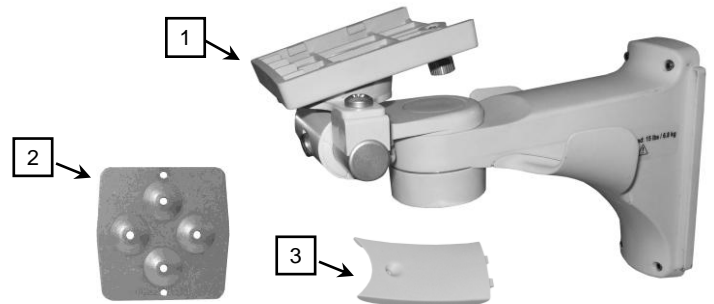
*The purpose of this guide is to:
Describe mounting of the Arm and monitor (pages 2 – 4).
Describe Routine Maintenance (page 5).*



Parts Reference

The following parts and hardware are included in this installation kit (hardware not shown):

Item #	Description	Qty
1	6" E-Series Arm	1
2	Mounting Adapter	1
3	Lower Arm Cover	1
4	M4 x 12mm PHMS	4
5	M4 Split Lock Washer	4
6	Adjustable Stop	1
7	1/8" Hex Wrench	1
8	5/32" Hex Wrench	1
9	Channel Cover, 16" (included instructions)	1



Tools Required

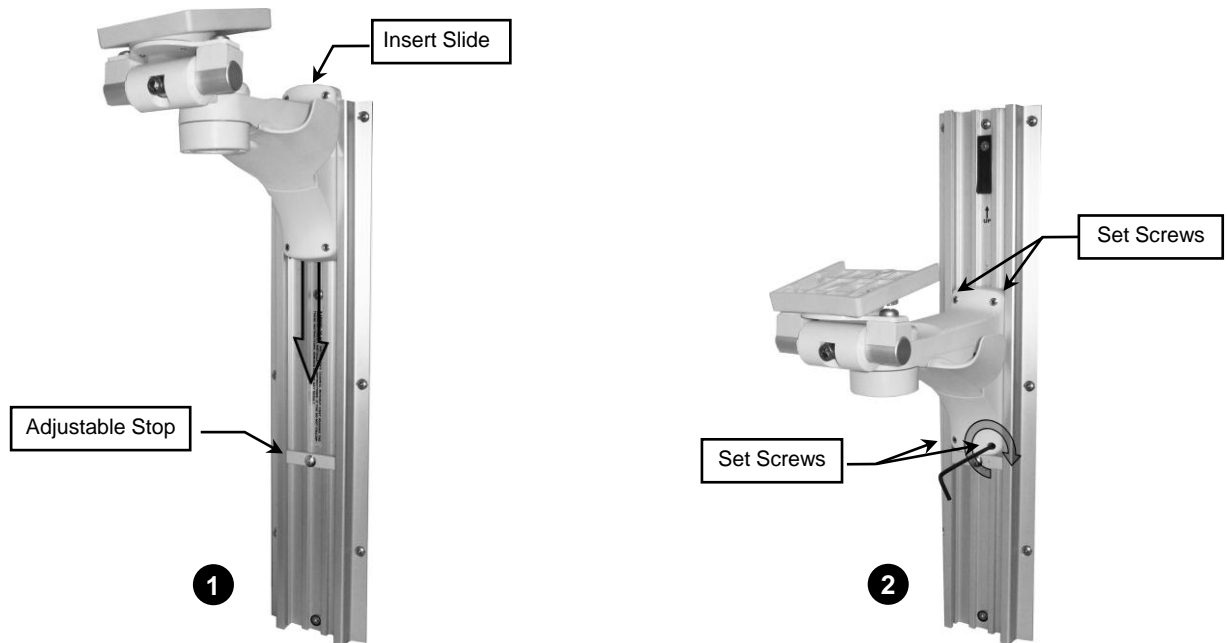
- Phillips screwdriver (not provided)
- 1/8" hex wrench (provided)
- 5/32" hex wrench (provided)
- 1/2" socket wrench (not provided)

Before mounting the Arm

1. Please consider carefully the device being mounted and the proximity of the assembly to other equipment, hospital personnel, and the patient. GCX recommends that the hospital's risk management personnel verify the appropriateness of the application prior to installation and use.
2. If assistance is needed regarding an application, please contact a GCX product specialist at (800) 228-2555 or (707) 773-1100.

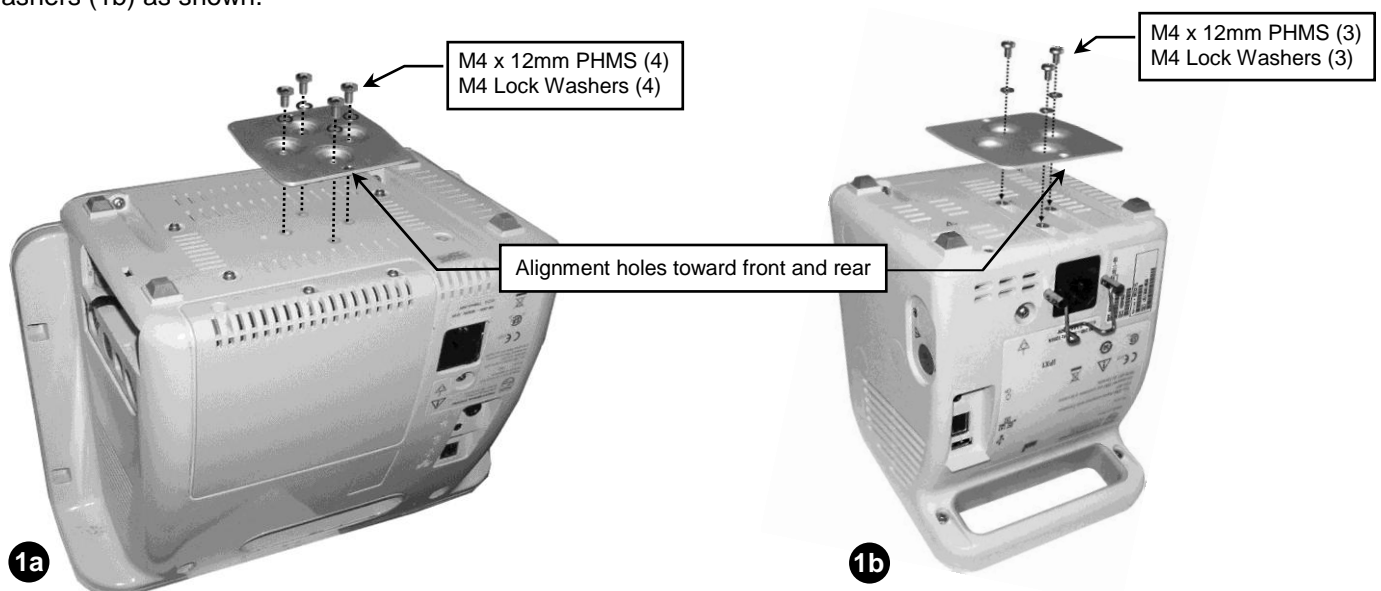
Mounting the E-Series Arm in the Channel

1. Slide the Adjustable Stop into the Channel to desired mounting position and tighten the center screw to secure. While supporting the bottom of the Arm, guide the Channel Slide (rear of Arm) into the top of the wall channel (Fig. 1) and move Arm to mounting position.
2. Using the 1/8" hex wrench provided, tighten the (4) set screws (Fig. 2) in Slide to secure position of Arm.

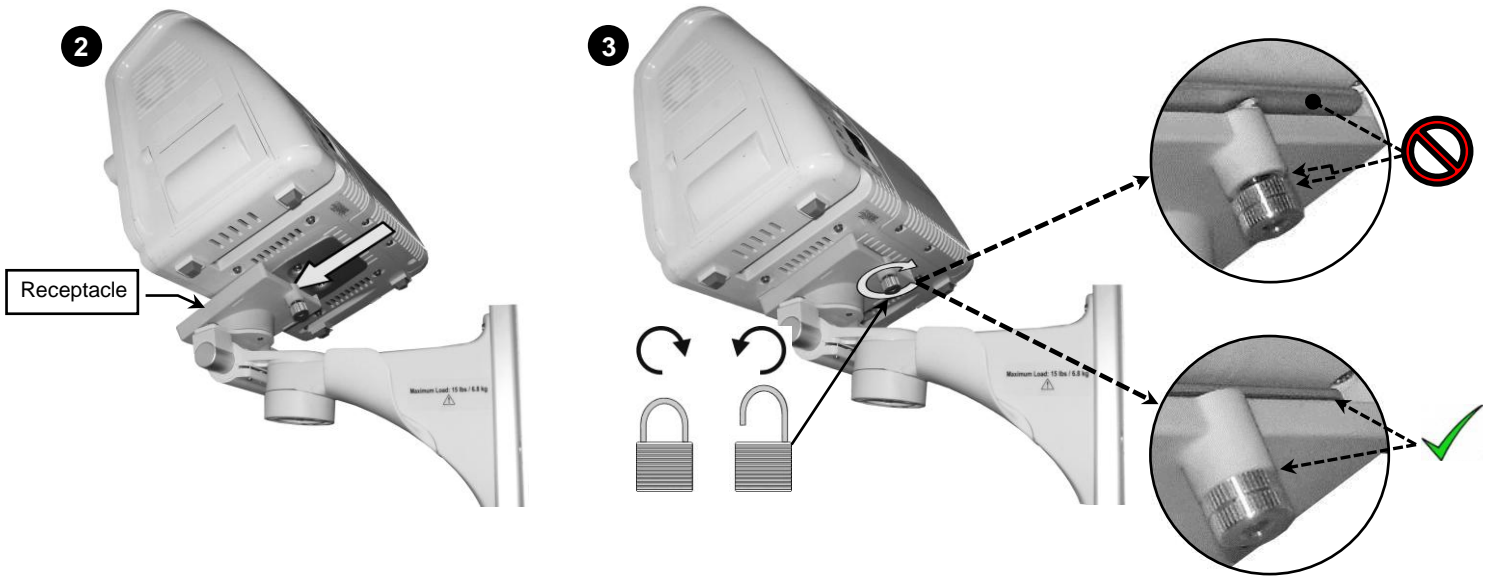


Mounting the Monitor

1. Orient the Mounting Adapter with alignment holes toward front and rear (see callout below). Fasten Adapter to bottom of monitor with four (4) M4 x 12mm PHMS and M4 Lock Washers (1a) or three (3) M4 x 12mm PHMS and M4 Lock Washers (1b) as shown.



- Slide Mounting Adapter into Receptacle from the rear as shown. **Installation Note:** It may be necessary to tilt the Mounting Assembly forward to allow better access to the rear of the Receptacle
- Tighten Thumbscrew at rear of Receptacle.



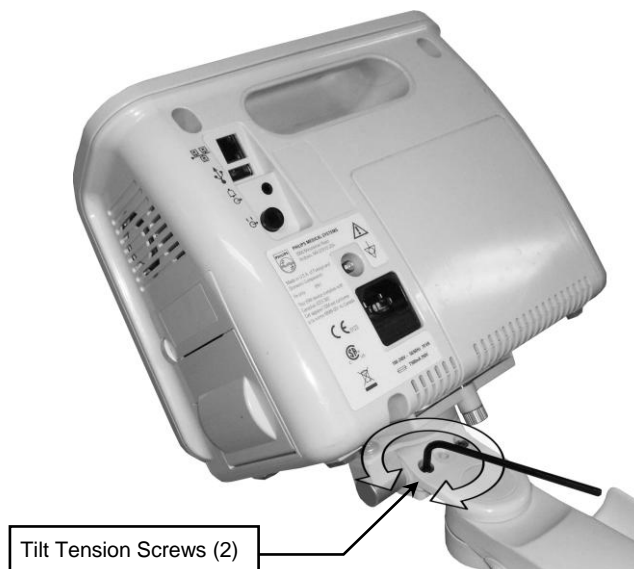
Installing the 16" Wall Channel Cover (not shown)

Install the Wall Channel Cover in accordance with the *Channel Cover Installation Guide (DU-UT-0001-20)*.

Making Adjustments to the E-Series Arm

Adjusting Tilt Tension

Using the 5/32" hex wrench provided, equally tighten or loosen two (2) tilt tension screws as shown below.



Swivel Tension Adjustment

Tighten or loosen the Swivel Tension Nut using a 1/2" [13mm] socket wrench (below right). To swivel the mounted instrument simply push or pull the corners of the instrument.

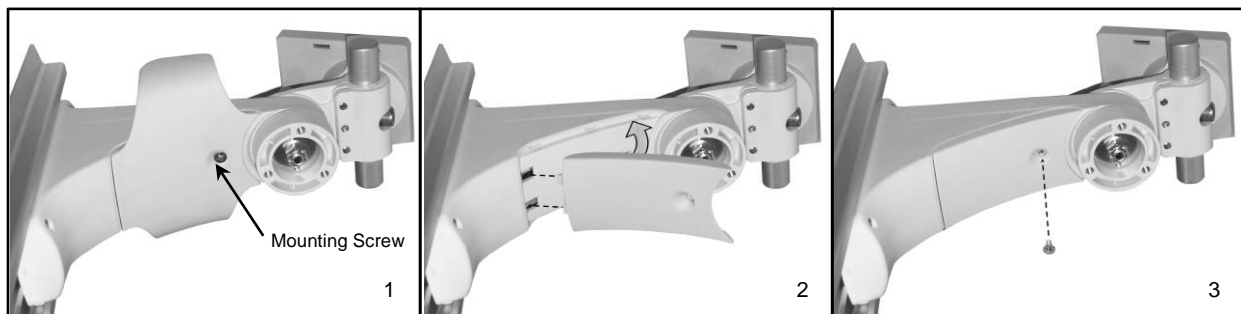


Cable Management

The E-Series arm has hooks located on the both sides of the arm for convenient cable management.



An optional Lower Arm Cover is included with this kit. To install, remove mounting screw and factory installed lower arm cover (Fig.1). Insert tabs and position cover on arm (Fig.2). Install mounting screw (Fig.3).



Routine Maintenance

Periodically inspect all fasteners associated with the mounting system. Tighten or adjust as necessary for optimal operation and safety.

Cleaning the Mounting Assembly

1. The mounting assembly may be cleaned with most mild, non-abrasive solutions commonly used in the hospital environment (e.g. diluted bleach, ammonia, or alcohol solutions).
2. The surface finish will be permanently damaged by strong chemicals and solvents such as acetone and trichloroethylene.
3. Do not use steel wool or other abrasive material to clean the mounting assembly.
4. Damage caused by the use of unapproved substances or processes will not be covered by warranty. We recommend testing of any cleaning solution on a small area of the mounting assembly that is not visible to verify compatibility.
5. Never submerge or allow liquids to enter the mounting assemblies. Wipe any cleaning agents off the mounting assembly immediately using a water-dampened cloth. Dry all mounting assemblies thoroughly after cleaning.

CAUTION: GCX makes no claims regarding the efficacy of the listed chemicals or processes as a means for controlling infection. Consult your hospital's infection control officer or epidemiologist. To clean or sterilize mounted instruments or accessory equipment, refer to the specific instructions delivered with those products.

