

Installation Guide

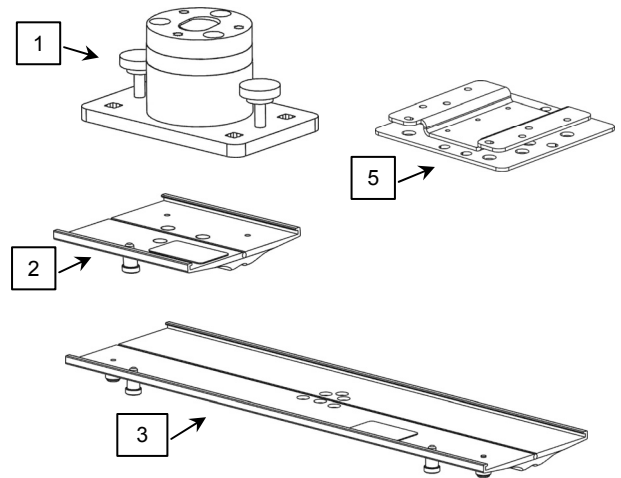
GE Healthcare Carescape F5 or F5/B850 Counter Top Mount

The purpose of this guide is to:

1. Describe installation of Mount on counter top (page 2)
2. Describe attachment of Mounting Plate to Swivel Base (page 2).
3. Describe mounting of F5 on Counter Top Mount (page 3).

The following parts and hardware are included in this installation kit (hardware not shown):

Item #	Description	Qty
1	Swivel Base	1
2	Mounting Plate, 5" Swivel-only	1
3	Mounting Plate, 17.5" Swivel-only (F5 + CPU)	1
4	#10-32 x 1/2" Flat Head Machine Screw (FHMS)	3
5	Mounting Adapter	1
6	M4 x 12 mm Pan Head Machine Screw (PHMS)	4
7	1/4-20 x 1-3/4" Carriage Bolt	4
8	1/4-20 x 3/4" Carriage Bolt	4
9	1-1/4" Flat Washer	4
10	1/4-20 Kep Nut	4



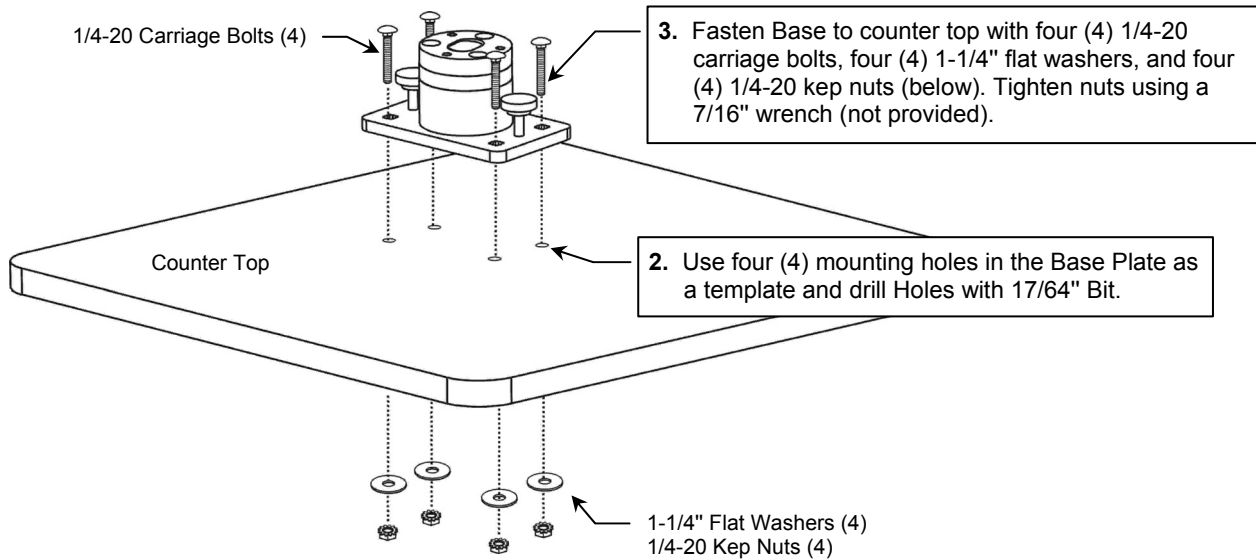
Tools required

- Phillips screwdriver (not provided)
- Drill and 17/64" drill bit (not provided)
- 7/16" wrench (not provided)

WARNING: It shall be the responsibility of the installer to determine whether the counter top surface will support the weight of the Mount and any mounted instruments or accessories.

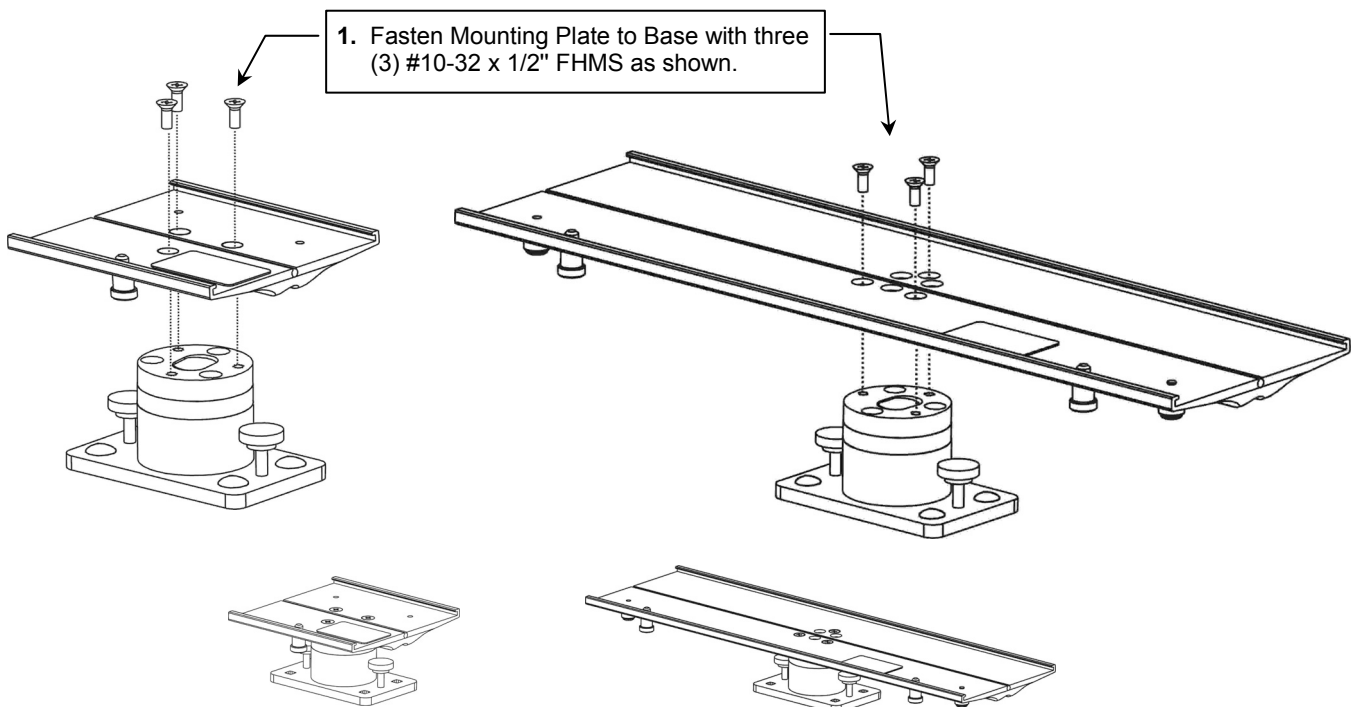
Installing Mount on Counter Top

1. Determine correct length of carriage bolt for thickness of counter top. See *Parts Reference* (page 1) for carriage bolts included in this mounting kit. Follow steps in callouts below.

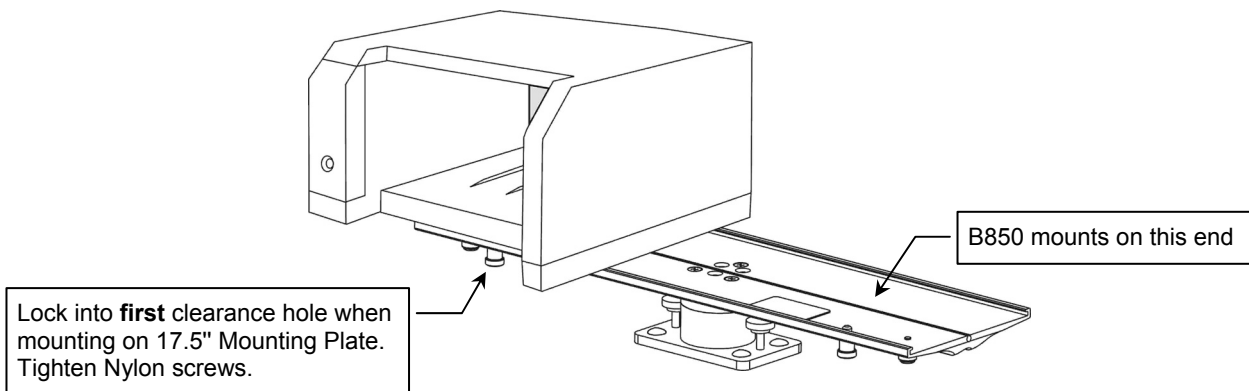
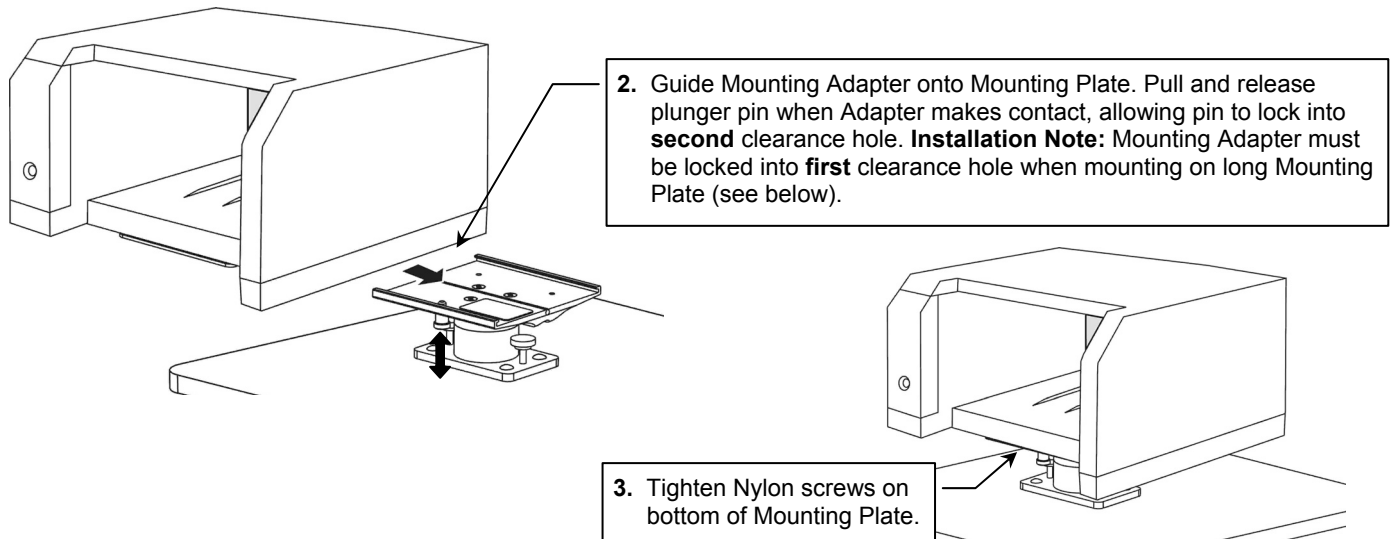
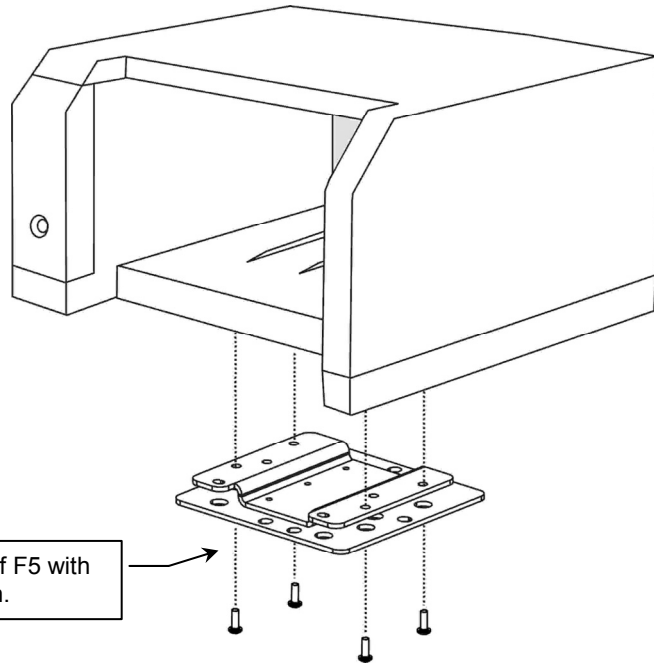


Attaching the Mounting Plate to the Base

Select 5" Mounting Plate for F5 only, or 17.5" Mounting Plate for F5 and B850.



Mounting the F5 on the Counter Top Mount



Routine Maintenance of the Mounting Assembly

Periodically inspect all mounting hardware. Tighten or adjust as necessary for optimal operation and safety.

Cleaning the Mounting Assembly

CAUTION: GCX makes no claims regarding the efficacy of the listed chemicals or processes as a means for controlling infection. Consult your hospital's infection control officer or epidemiologist. To clean or sterilize mounted instruments or accessory equipment, refer to the specific instructions delivered with those products.

1. The mounting assembly may be cleaned with most mild, non-abrasive solutions commonly used in the hospital environment (e.g. diluted bleach, ammonia, or alcohol solutions).
2. The surface finish will be permanently damaged by strong chemicals and solvents such as acetone and trichloroethylene.
3. Do not use steel wool or other abrasive material to clean the mounting assembly.
4. Damage caused by the use of unapproved substances or processes will not be covered by warranty. We recommend testing of any cleaning solution on a small area of the mounting assembly that is not visible to verify compatibility.
5. Never submerge or allow liquids to enter the mounting assembly. Wipe any cleaning agents off of the mounting assembly immediately using a water-dampened cloth. Dry mounting assembly thoroughly after cleaning.