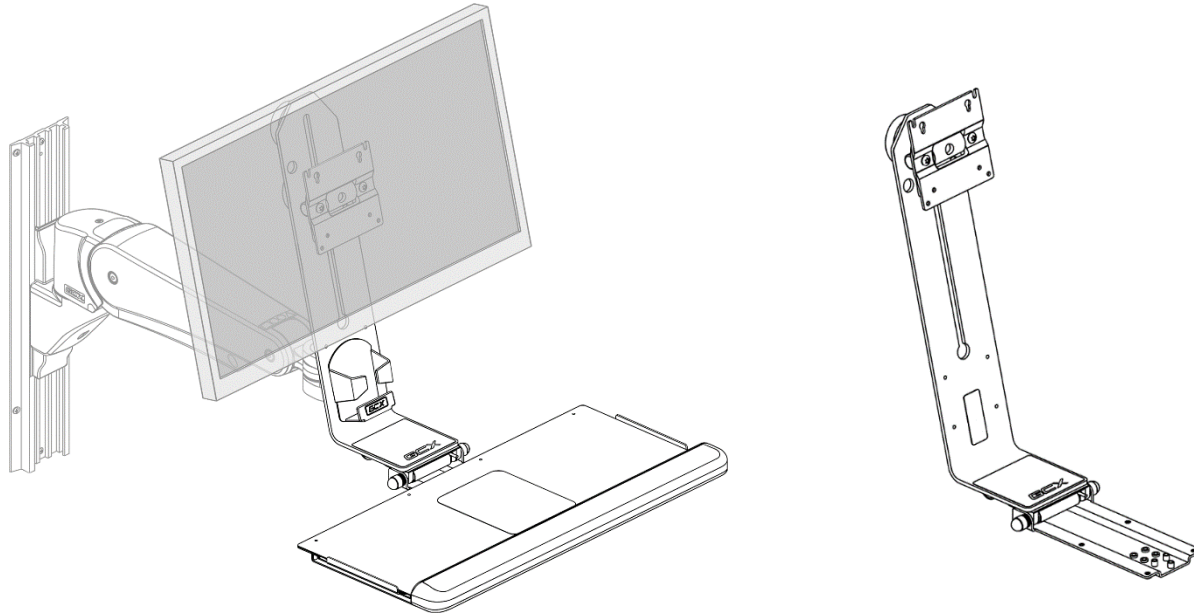


Installation Guide
Fixed Angle L-Bracket with Adjustable Height/Tilt Display Mount and Folding Keyboard Bracket
(Refer to qualified personnel)



WARNING: The combination of a support arm and the L-Bracket presents a potential pinch hazard at all points and positions where the support arm and L-Bracket can come into contact.

CAUTION: Do not place fingers or cables in-between the Folding Keyboard Bracket Mounting Block and the Mounting Plate surfaces. There is risk of pinching or crushing fingers and cables, especially while installing the keyboard tray and adjusting the folding tension.

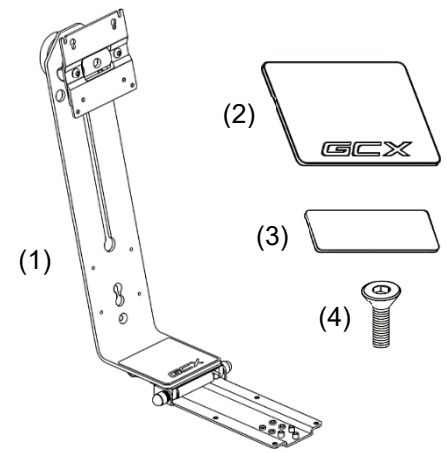
Purpose:

1. Describe attachment of L-bracket to Arm (page 2).
2. Describe label installation (page 2).
3. Describe attachment of Display and Keyboard Tray to L-Bracket (page 3).
4. Describe optional mouse house installation (page 3).
5. Describe adjustments, cable management and cleaning (page 4-5).

Parts Reference

The following parts and hardware are included in this installation kit:

Item #	Description	Qty
1	Folding L-Bracket Assembly with 75/100mm VESA Display Mount	1
2	GCX Label	1
3	Blank screw cover label	1
4	1/4-28 x 3/4" Flat Head Socket Cap Machine Screws (FHSCS)	2
5	M4 PHMS VESA Display mounting screw kit (not shown)	1
6	5/32" Hex Wrench (not shown)	1

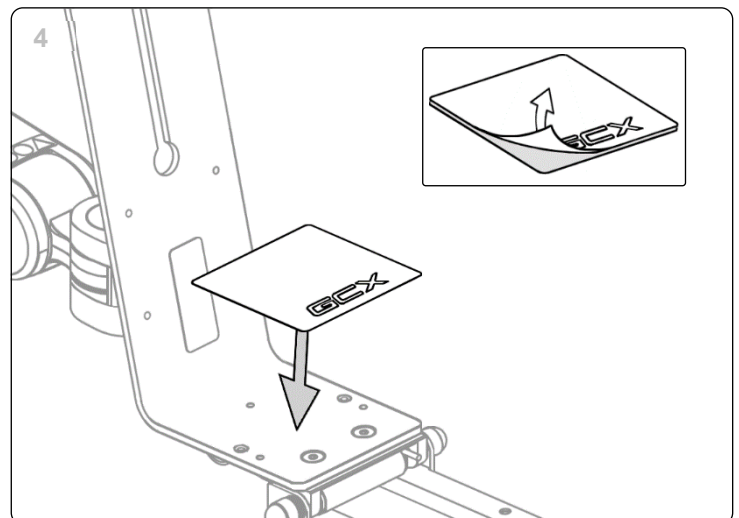
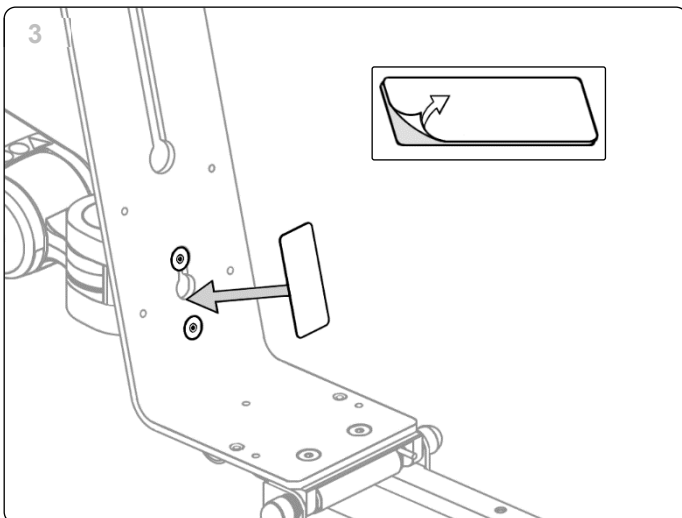
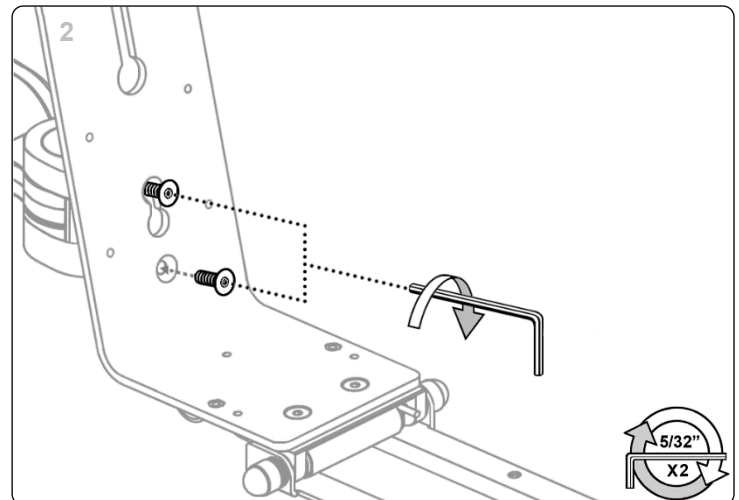
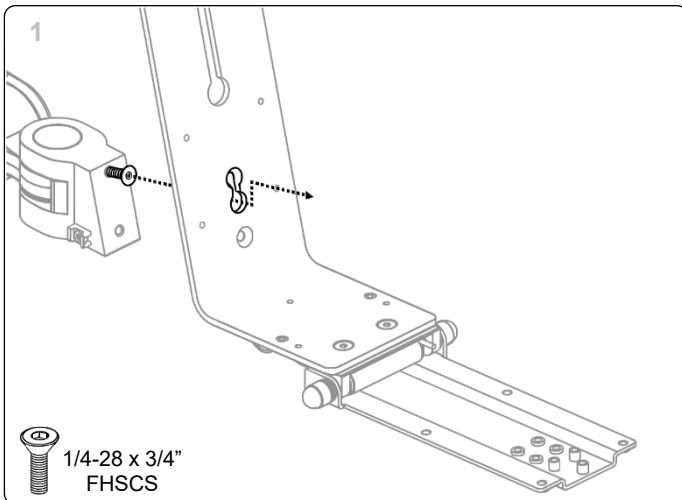


Tools Required:

- 5/32" hex wrench (provided)
- Phillips screwdriver (not provided)
- 1/2" (13mm) Socket Wrench (not provided)

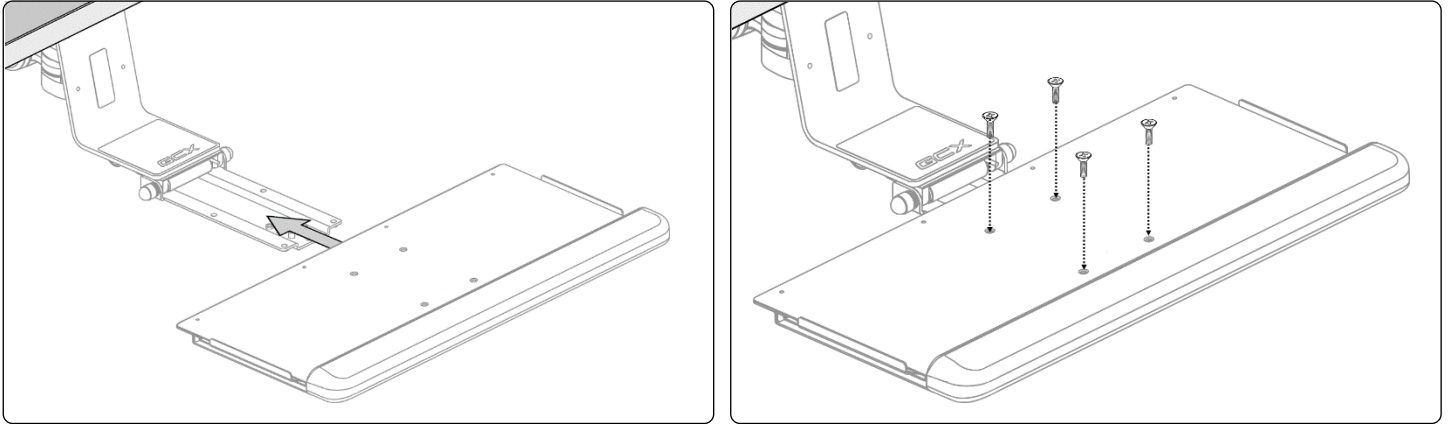
Attaching the L-Bracket to an M Series Pivot or VHM Variable Height Arm

1. Partially install (1) 1/4-28 x 3/4" FHSCS in the upper mounting hole. Install L-bracket onto upper screw, and locate into top of key hole of bracket.
2. Install lower screw then using a 5/32" Hex Wrench, tighten the two (2) 1/4-28 x 3/4" FHSCS.
3. Use the blank screw cover label provided to cover screws – Clean surface before applying the label.
4. Use GCX label provided to cover hinge screws – Clean surface before applying the label.



Attaching Keyboard Tray (not supplied with the L-Bracket)

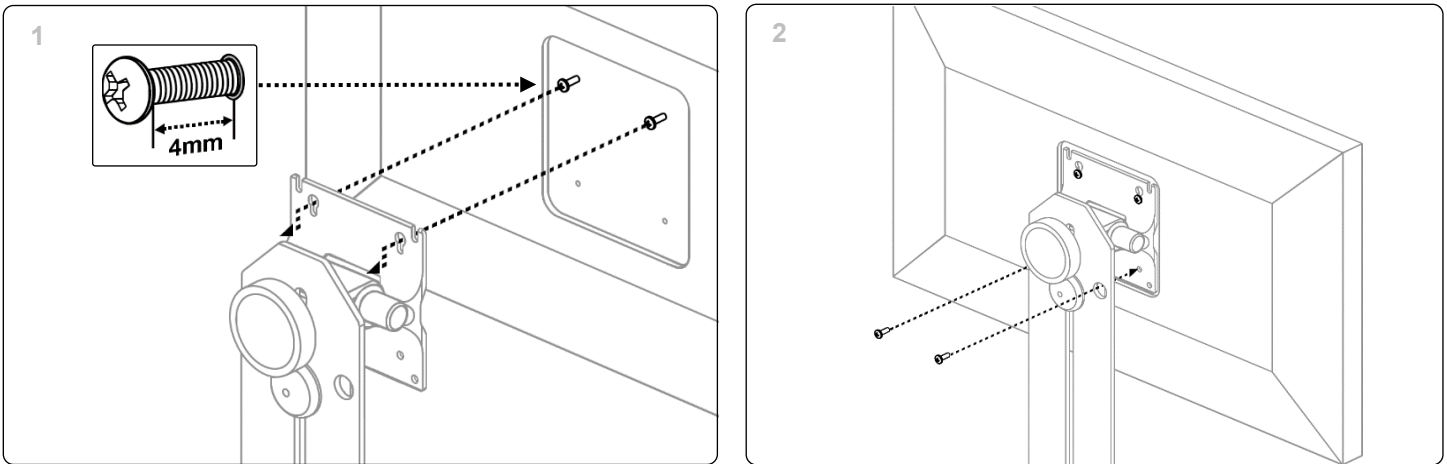
Install Keyboard Tray to L-Bracket using the installation instructions supplied with the Keyboard Tray.



Attaching Flat Panel Display

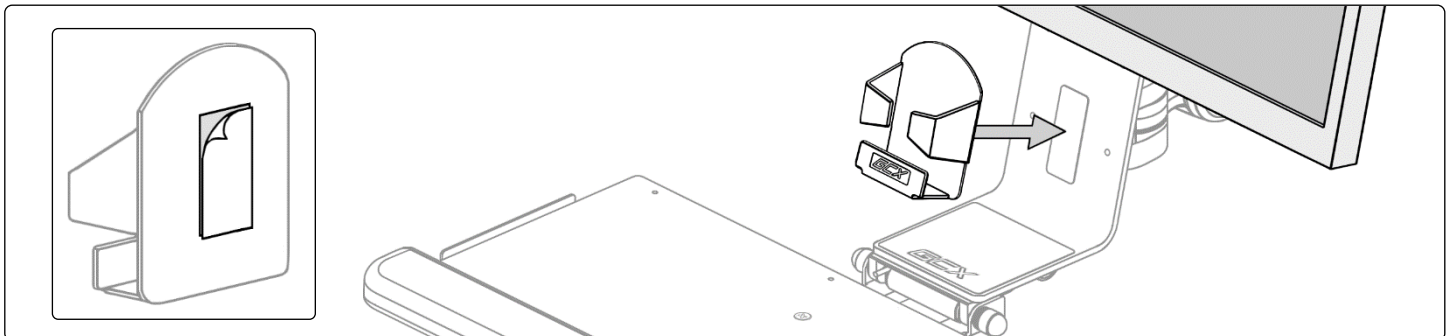
Installation Note: The VESA mounting plate provides both the 75 x 75mm and 100 x 100mm VESA mounting patterns. The M4 PHMS VESA display mounting kit includes a range of screw lengths, 8,10,12 and 16mm long. Choose the length which will provide adequate thread engagement with your display. If your display has a recessed VESA pattern, you may need to use the supplied nylon spacers to mount it properly.

1. Thread two (2) M4 PHMS into the top two (2) threaded holes of the VESA mounting pattern, leaving 4mm of thread exposed (approximately 6 full turns from tight).
2. Position the display onto the VESA Mounting Plate by guiding the screws into the slots in the top of the Mounting Plate (below left). Thread two (2) M4 PHMS screws into the lower mounting holes (below right). Tighten all screws.



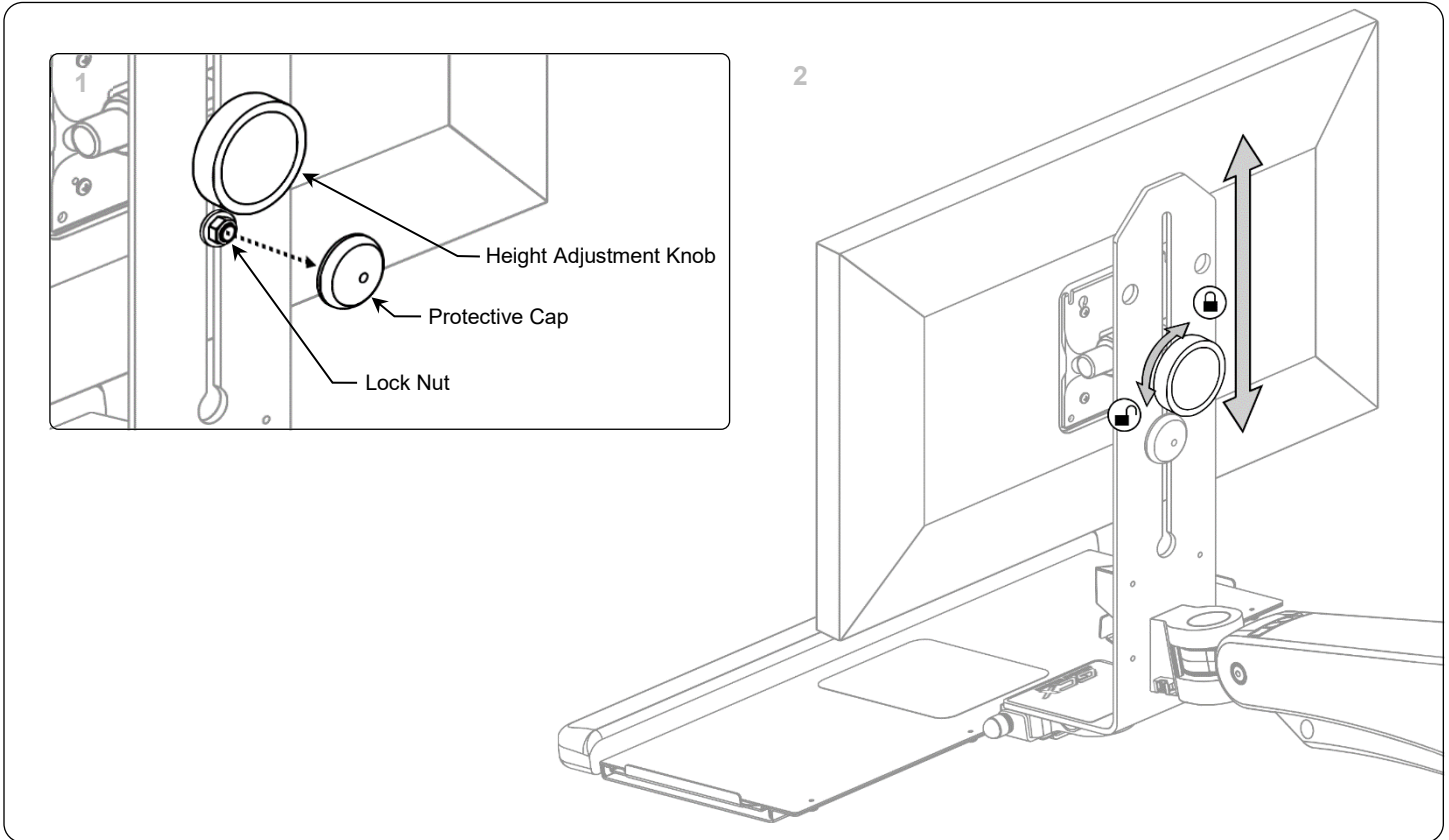
Install optional Mouse House (supplied with keyboard tray)

Install Mouse House to lower section of L-Bracket below the Display as shown. (Mouse House can also be installed per the instructions supplied with the Keyboard Tray)



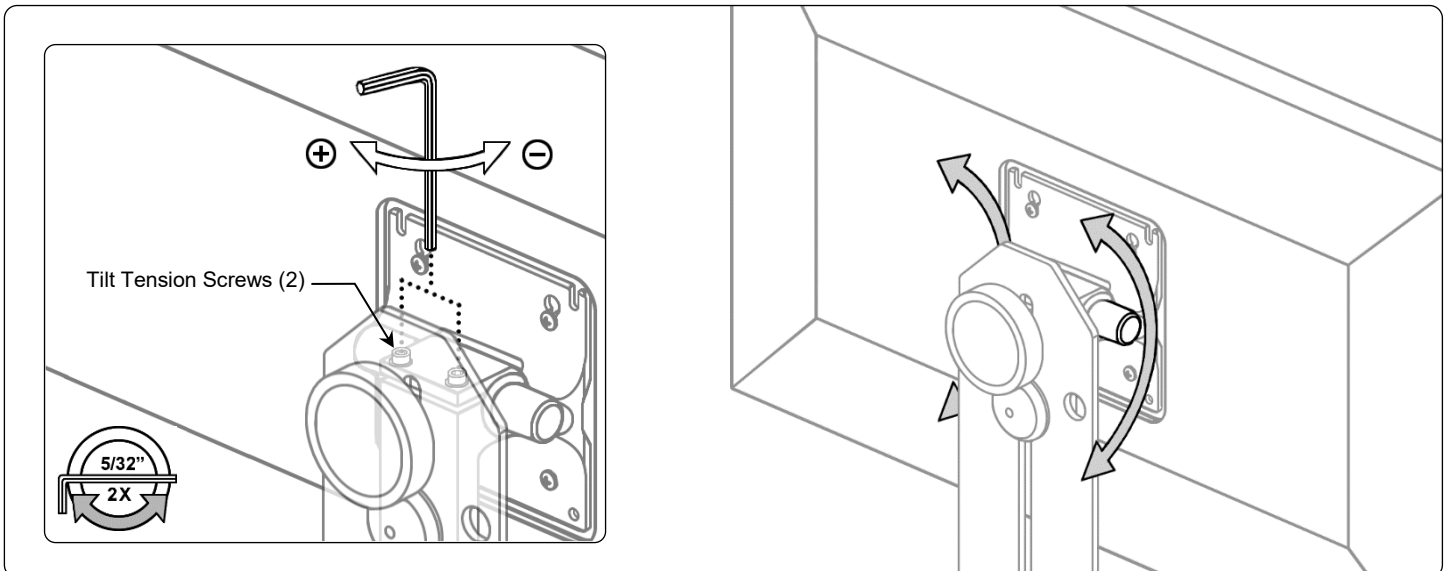
Adjusting the Display height

1. To change primary height adjustment tension, remove protective cap to expose Lock Nut. Use a ½" (13mm) socket wrench to tighten or loosen the Lock Nut to adjust fit in L-Bracket. Place the protective cap on the Lock Nut once adjustment is completed.
2. To change secondary height adjustment, hold Display, loosen Height Adjustment Knob, move Display to desired vertical position and tighten Height Adjustment Knob.



Adjusting Display Tilt Tension

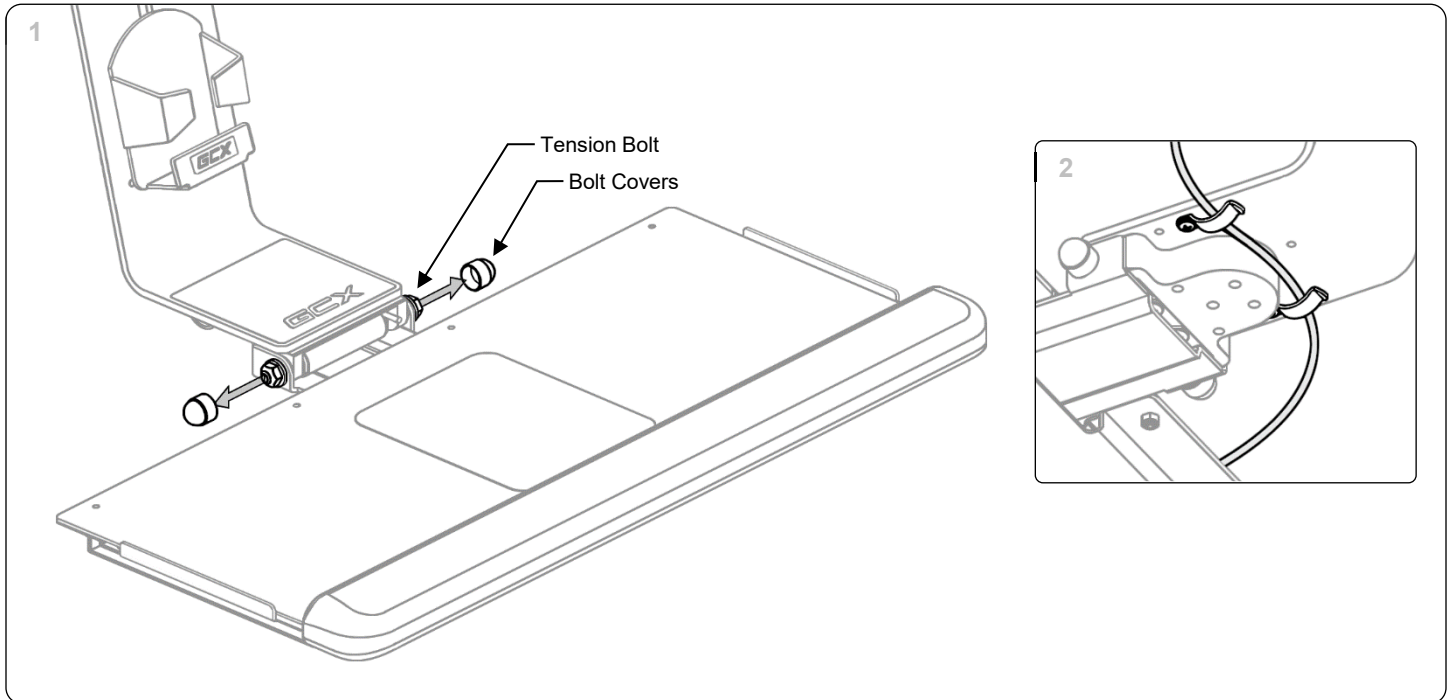
To adjust tilt tension on the Display Mount, equally loosen or tighten the two (2) Tension Adjustment Screws with 5/32" Hex Wrench until desired tension is achieved.



Adjusting Folding Tension on the Keyboard Bracket and Cable Management

If the Folding Keyboard Bracket becomes difficult to fold or will not maintain the folded (upward) position, adjust folding tension as described below:

1. Pry Plastic bolt covers off each end of the Tension Bolt. Replace bolt covers after adjustment. Using a 1/2" [13mm] wrench on each end of the bolt, tighten or loosen bolt until desired tension is achieved.
2. Cables can be routed from the keyboard and mouse using the two clips underneath either side of the L-bracket.



Routine Maintenance

Periodically inspect all fasteners associated with the mounting assembly. Tighten or Adjust as necessary for optimal operation and safety.

Cleaning the Mounting Assembly

1. The mounting assembly may be cleaned with most mild, non-abrasive solutions commonly used in the hospital environment (e.g. diluted bleach, ammonia, or alcohol solutions).
2. The surface finish will be permanently damaged by strong chemicals and solvents such as acetone or trichloroethylene.
3. Steel wool or other abrasive material should never be used.
4. Damaged caused by the use of unapproved substances or processes will not be warranted. We recommend testing of any cleaning solution on a small area of the mounting assembly that is not visible to verify compatibility.
5. Never submerge or allow liquids to enter the mounting assembly. Wipe any cleaning agents off the mounting assembly immediately using a water-dampened cloth. Dry the assembly thoroughly after cleaning.

CAUTION: GCX makes no claims regarding the efficacy of the listed chemicals or processes as a means for controlling infection. Consult your hospital's infection control officer or epidemiologist. To clean or sterilize mounted devices or accessory equipment, refer to the specific instructions delivered with those products.