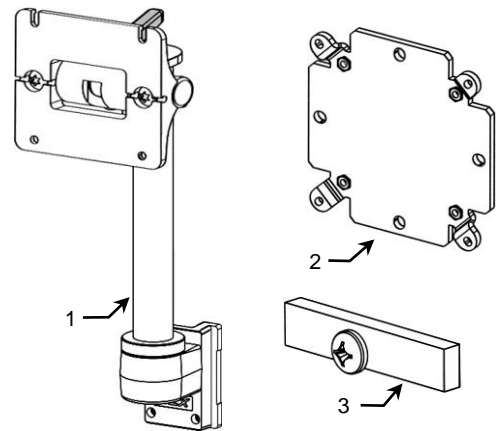


Installation & Operating Manual M-Series Flush Mount with 9" Riser for Flat Panel Display

Parts Reference

The following parts and hardware are included in this kit (hardware not shown).

Item #	Description	Qty
1	Flush Display Mount	1
2	100 x 100 VESA Mounting Adapter w/ Hardware	1
3	Adjustable Stop	1
4	1/8" Hex Wrench	1
5	9/64" Hex Wrench	1



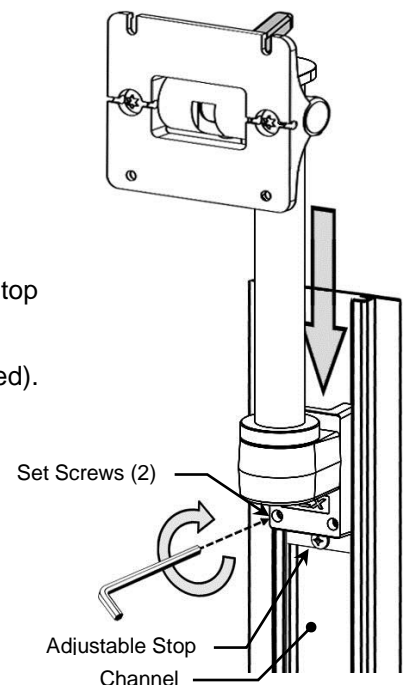
! WARNING: Do not position support arm or device above a patient.

The mounted display may move suddenly due to normal wear or improper adjustment of the tilt and swivel functions (see page 2). Failure to periodically inspect and adjust these functions may result in damage to equipment or injury.

Installing Flush Mount in Channel

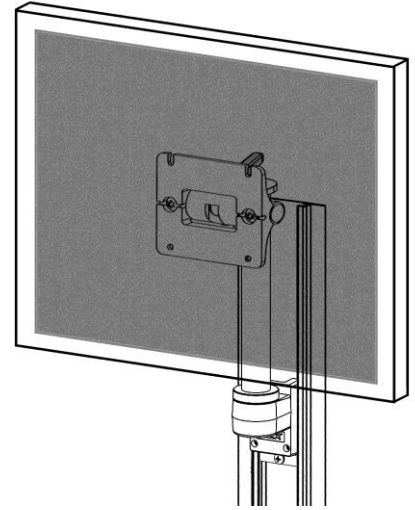
Installation Note: Depending on the size of the display, it may be necessary to mount the display to the flush mount prior to installing the mount into channel.

1. Install Adjustable Stop in top of Channel, slide to bottom of Channel and tighten center screw. Note: If installing mount into an RC Cart column, skip this step.
2. While supporting the bottom of the Arm with one hand, guide the Slide (rear of Arm) into top of the Channel.
3. Guide Arm to desired height and tighten two (2) set screws with 1/8" hex wrench (provided).



Mounting Flat Panel Display

See Installation Guide *Mounting Kit for 75/100mm VESA® Compatible Flat Panel Displays (DU-FLP-0002-17)* included with this kit for mounting instructions.



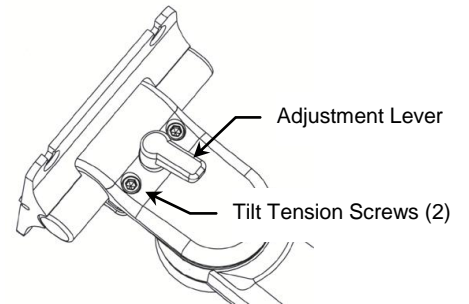
Making Adjustments to the Arm

Tilt

Adjust tilt by loosening the Tilt Adjustment Lever. Grasp the device and tilt to desired angle. Tighten Tilt Adjustment Lever to lock position.

Tilt Tension

Adjust tilt tension by equally tightening or loosening two (2) Tension Adjustment Screws with the 9/64" hex wrench provided. Once overall tilt tension is set, use Tilt Adjustment Lever to fine tune/lock tilt position.



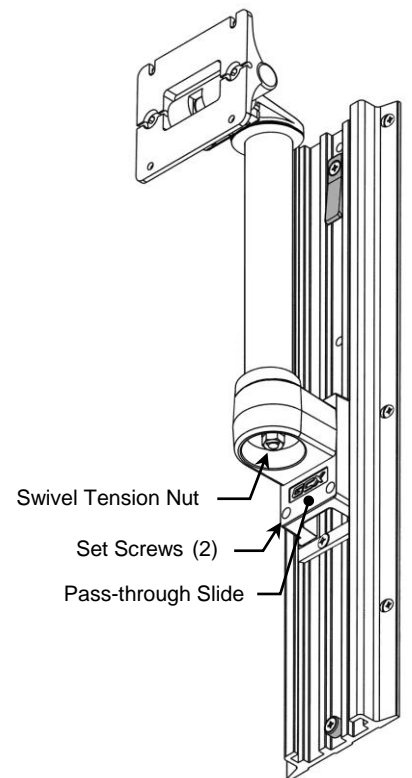
Swivel Tension

To adjust the swivel tension, tighten or loosen the Swivel Tension Nut with a 1/2 [13 mm] socket wrench.

Cable Management

A "pass-through" channel slide allows cables to run behind the arm within the Channel.

Note: If cable connectors are too large to fit through the pass-through, try placing the cables in the path of the Slide before installing the arm in the Channel.



Routine Maintenance

Periodically inspect all fasteners associated with the mounting system. Tighten or adjust fasteners as necessary for optimal operation and safety.

Cleaning the Mounting Assembly

1. The mounting assembly may be cleaned with most mild, non-abrasive solutions commonly used in the hospital environment (e.g. diluted bleach, ammonia, or alcohol solutions).
2. The surface finish will be permanently damaged by strong chemicals and solvents such as acetone or trichloroethylene.
3. Do not use Steel wool or other abrasive material.
4. Damage caused by the use of unapproved substances or processes will not be warranted. It is recommended that you test any cleaning solution on a small area of the arm that is not visible to verify compatibility.
5. Never submerge or allow liquids to enter the arm. Wipe any cleaning agents off of the arm immediately, using water dampened cloth. Dry the arm thoroughly after cleaning.

CAUTION: GCX makes no claims regarding the efficacy of the listed chemicals or processes as a means for controlling infection. Consult your hospital's infection control officer or epidemiologist. To clean or sterilize mounted devices or accessory equipment, refer to the specific instructions delivered with those products before installing the arm in the Channel.