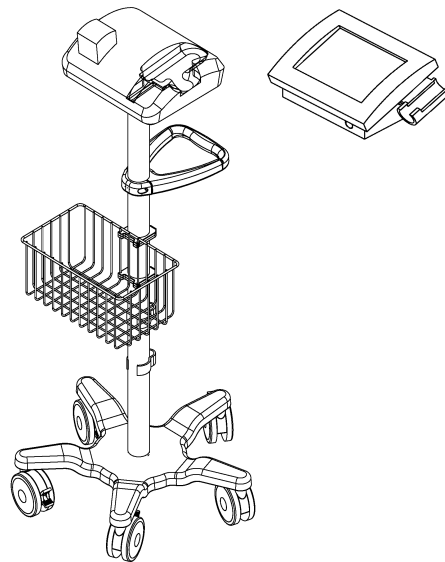


### Installation Guide

#### Alliqua™ BioMedical UltraMIST® and MIST® Therapy System Roll Stand Kit

**Purpose:**

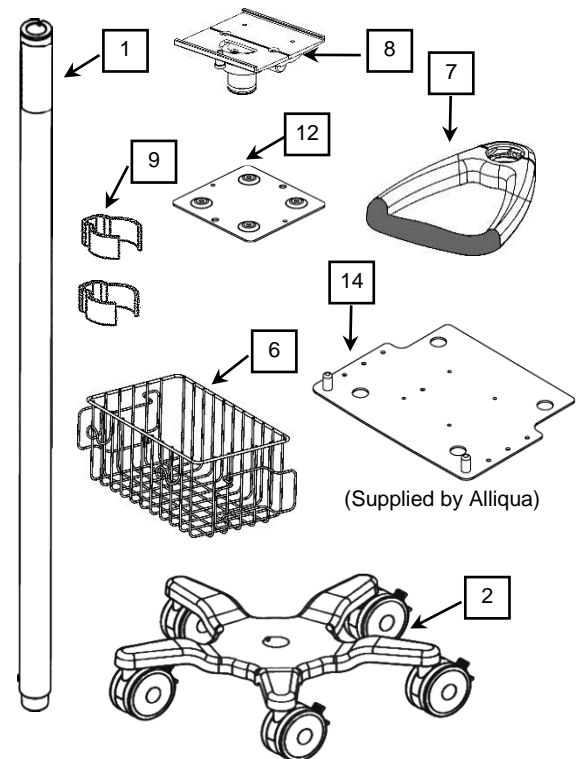
To describe the installation of the UltraMIST and MIST Therapy System Roll Stand Kit



**Parts Reference**

The following parts and hardware are included with this installation kit (hardware not shown):

Item #	Description	Qty
1	Roll Stand Post'	1
2	Roll Stand Base with 10 lbs/4.5kg Counterweight	1
3	5/16-18 x 1" Hex Head Cap Screw (HHCS) (not shown)	1
4	5/16 Flat Washer (not shown)	1
5	5/16 Split Lock Washer (not shown)	1
6	Utility Basket (Nylon Clips, 8-32 PHMS, Hex Nut)	1
7	Handle (includes mounting hardware)	1
8	Swivel/Tilt Mounting Plate Assembly	1
9	Cable Clip	2
10	5/32" Hex Wrench (not shown)	1
11	2.5 mm Hex Wrench (not shown)	1
12	VESA Mounting Plate	1
13	M4 x 6mm Pan Head Machine Screw (PHMS) (not shown)	4
14	MIST System Cart Adaptor (Supplied by Alliqua)	1

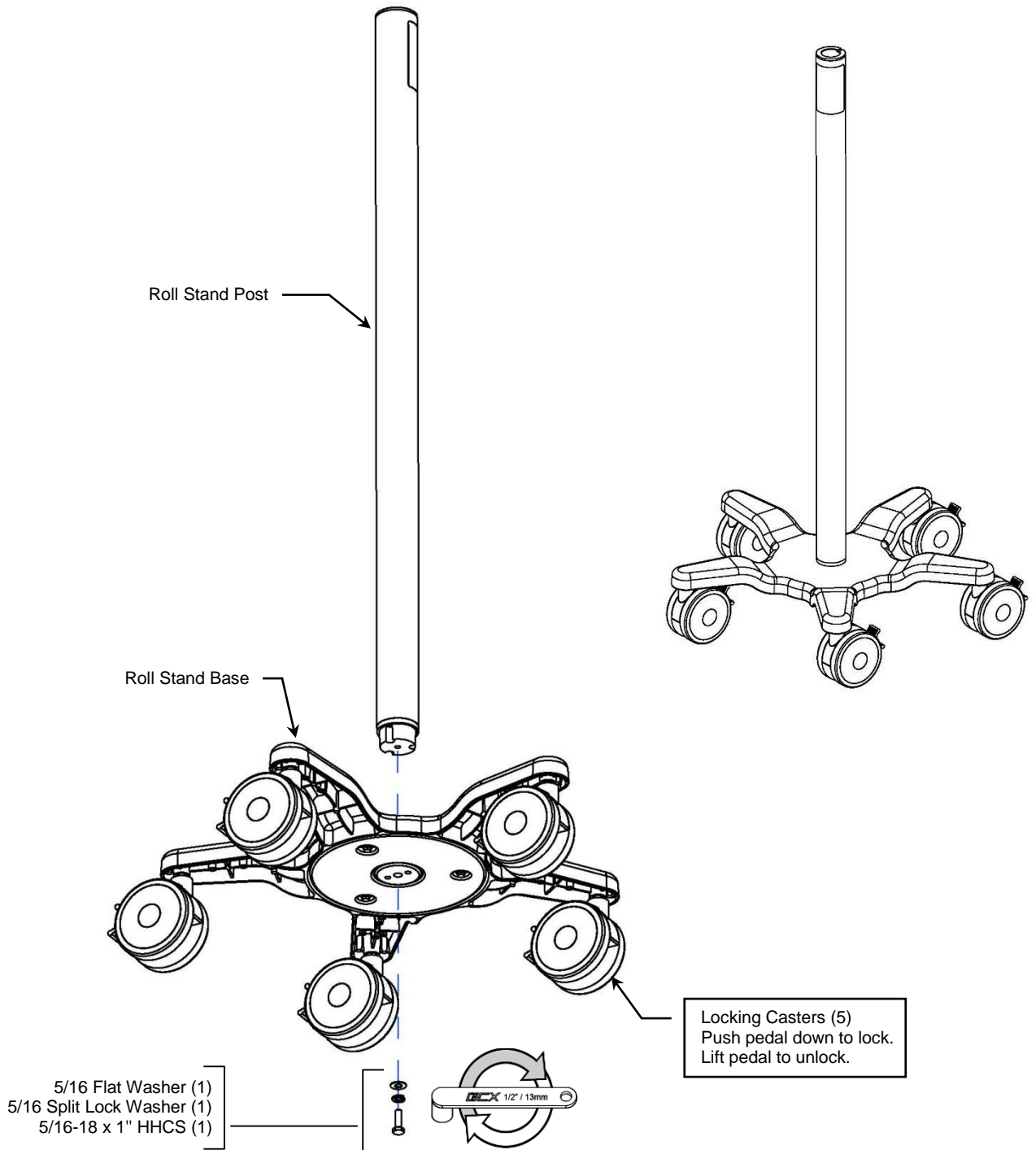


**Tools Required**

- 5/32" [4 mm] hex wrench (provided)
- 2.5 mm hex wrench (provided)
- 1/2" [13mm] wrench (provided)
- Phillips screwdriver (not provided)

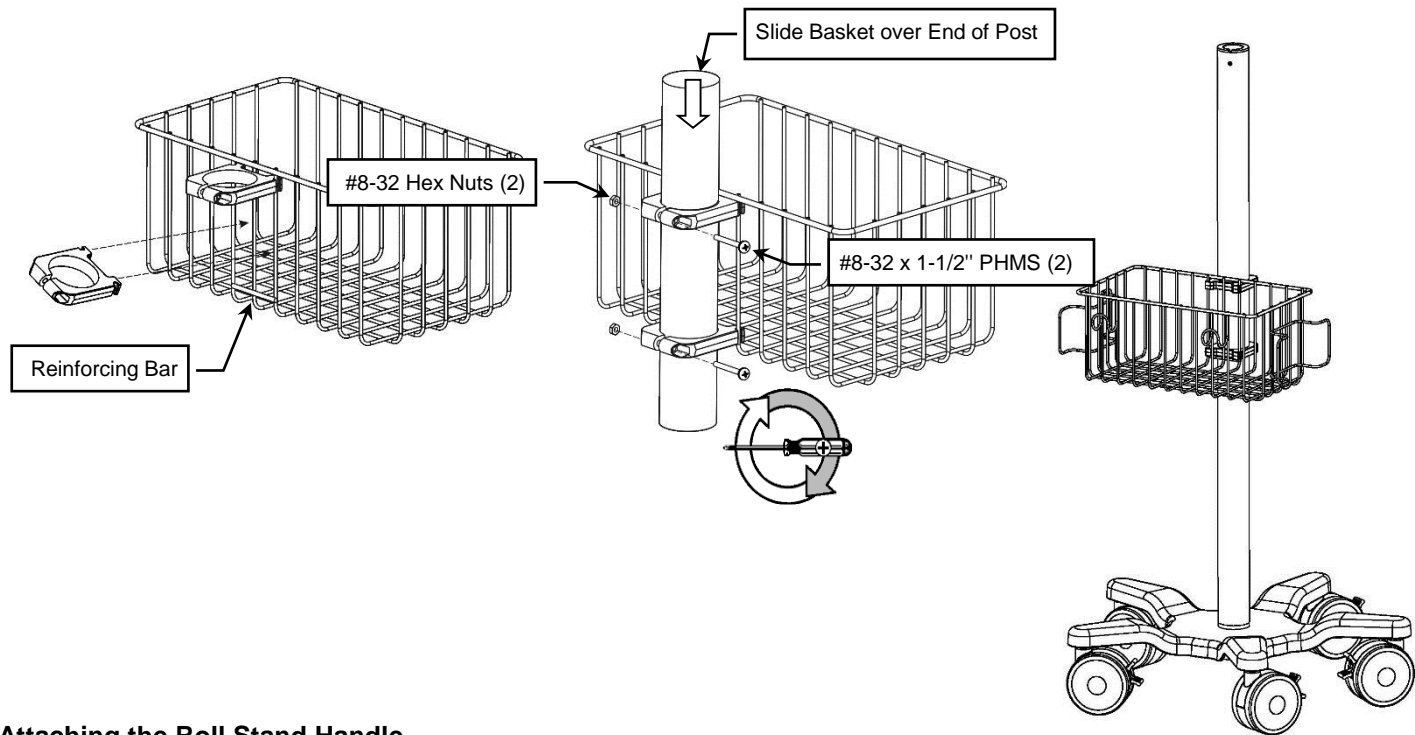
### Assembling the Roll Stand (Post to Base)

1. Insert Roll Stand Post in Base and lay assembly on its side (not shown) for access to bottom of Base.
2. Using a 1/2" [13 mm] wrench, fasten Post to Base with one (1) 5/16-18 x 1" HHCS, 5/16 split lock washer, and 5/16" flat washer as shown below.



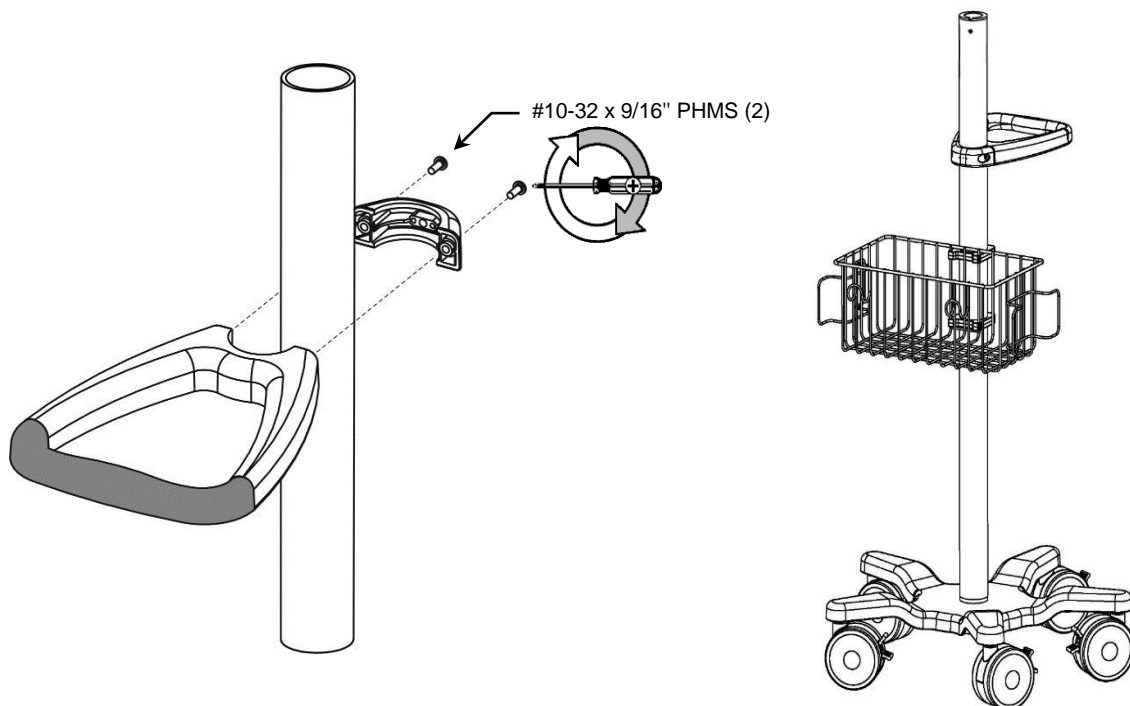
## Installing Basket on Post

1. Above the reinforcing bar (below left), install Nylon Clips at an angle, in center of Basket. Rotate Clips until both are horizontal. Slide Clips to top and bottom of Basket.
2. Slide Clips over top end of Post. Position Basket at desired height and install two (2) #8-32 pan head machine screws (PHMS) and #8-32 hex nuts as shown below. Tighten screws until Basket does not rotate on Post.



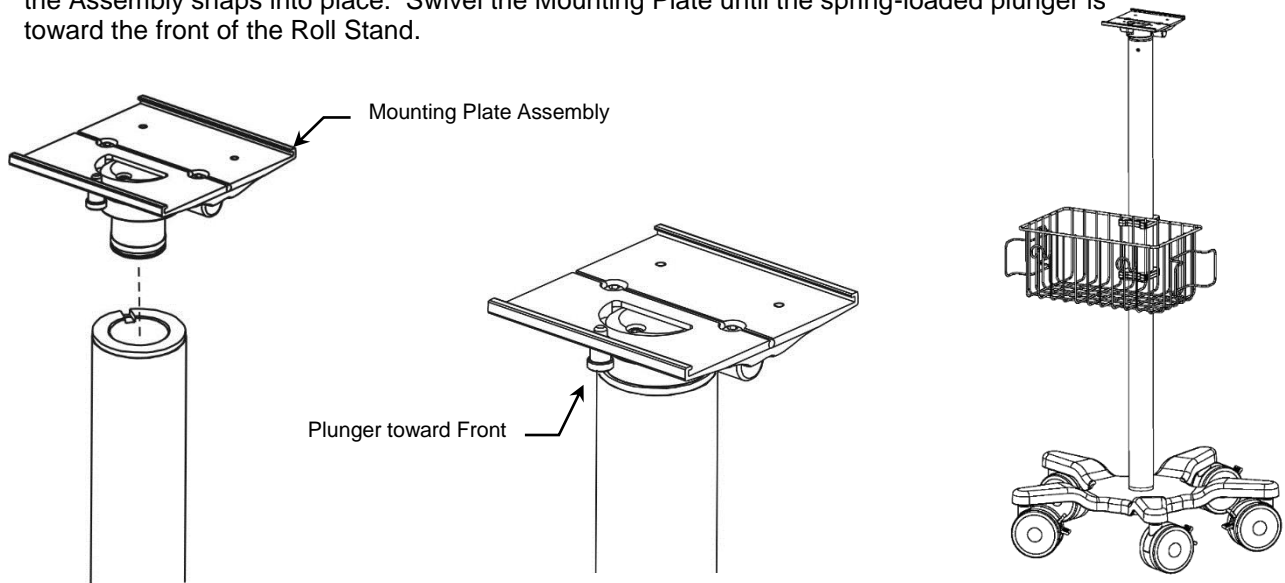
## Attaching the Roll Stand Handle

1. Fasten Handle to Roll Stand Post with two (2) #10-32 x 9/16" PHMS as shown. Alternately tighten Handle screws until Handle does not rotate around Post. **Installation Note:** Handle position shown is typical but Handle may be attached at any desired location on the Post.



## Installing Mounting Plate Assembly in Post

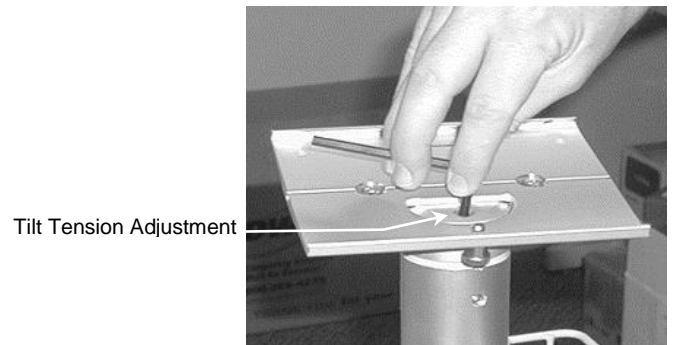
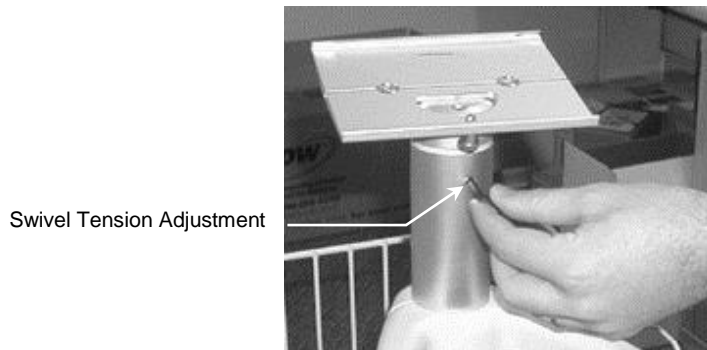
1. Insert Mounting Plate Assembly in top of Post (below left). Press downward while twisting until the Assembly snaps into place. Swivel the Mounting Plate until the spring-loaded plunger is toward the front of the Roll Stand.



## Adjusting Swivel and Tilt Tension on the Tilt/Swivel Mounting Plate

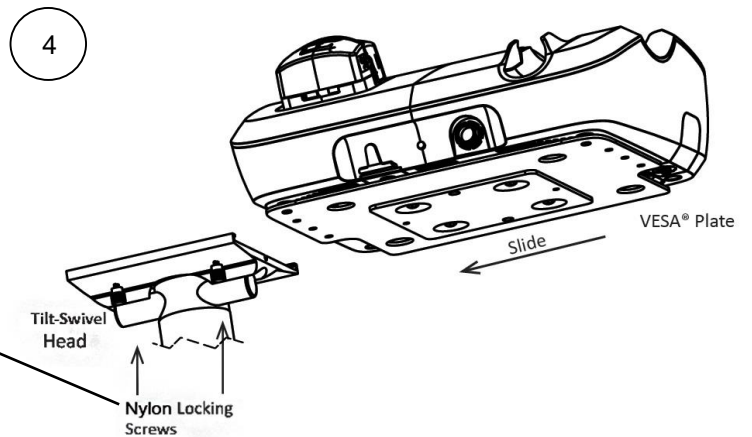
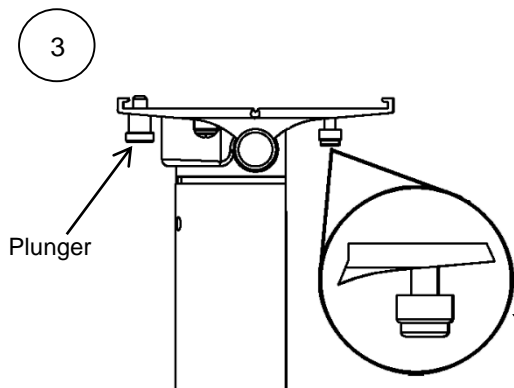
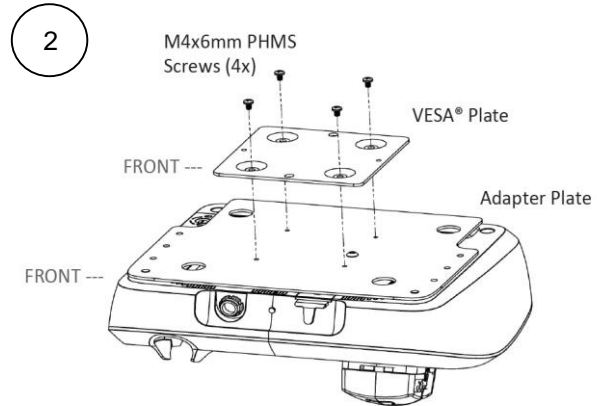
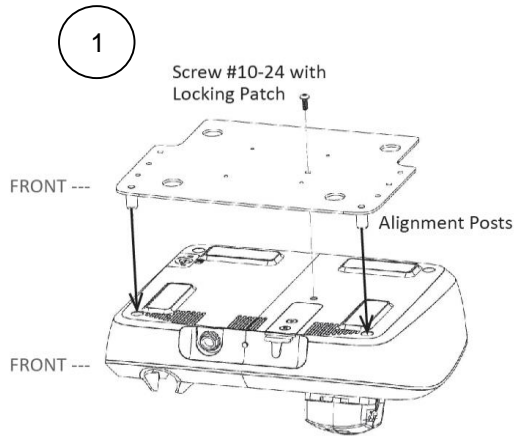
Adjust **Swivel tension** by tightening or loosening the socket set screw on the side of the Roll Stand Post (below left). A 2.5mm hex wrench is provided for this adjustment.

Adjust **Tilt tension** by tightening or loosening the socket set screw on the top of the Roll Stand Post (below right). A 5/32" hex wrench is provided for this adjustment.



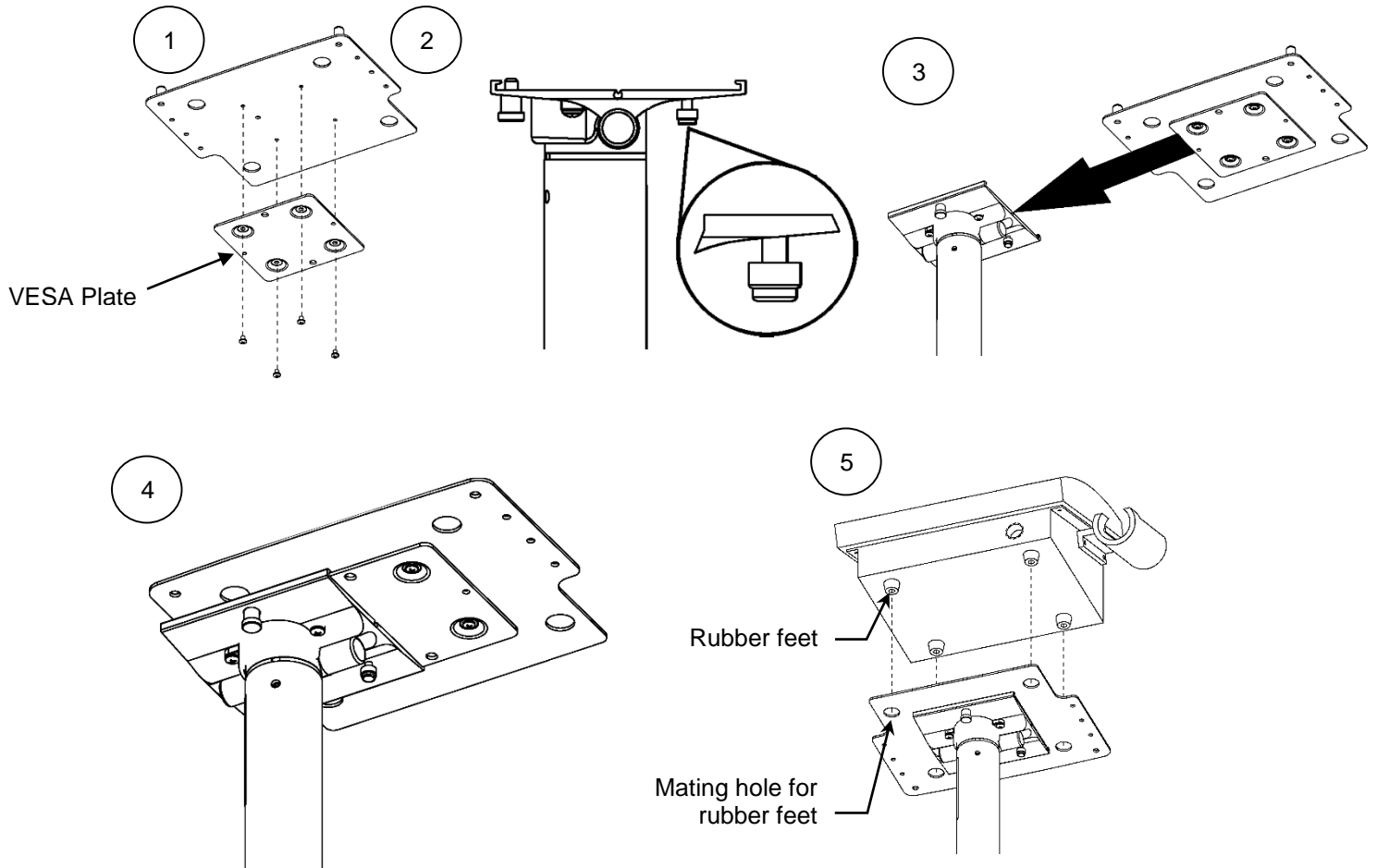
## Installation of UltraMIST, MIST System Cart Adapter and VESA Plate

1. Place the UltraMIST System on a flat surface with bottom exposed. (Ensure treatment wand has been removed.) Place cart adapter plate on to the UltraMIST generator using alignment posts. Insert #10-24 screw with locking patch from cart adapter kit through opening in center of adapter plate and tighten.
2. Using a Phillips Screwdriver, attach VESA plate to Cart Adaptor using four (4) M4 x 6mm PHMS from VESA mounting kit .
3. Ensure nylon locking screws are backed off, so that they do not cause an interference while sliding the VESA plate.
4. While pulling down the plunger, slide VESA plate and Cart Adaptor into the Mounting Plate Assembly.
5. Release plunger and continue sliding Adapter until Plunger snaps into clearance hole, then tighten the Nylon locking screws on the Mounting Plate



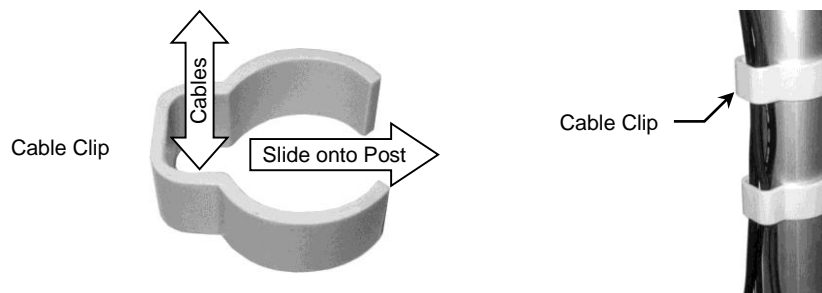
## Installation of MIST Therapy, MIST System Cart Adapter and VESA Plate

1. Using a Phillips Screwdriver, attach VESA plate to Cart Adapter using four (4) M4 x 6mm PHMS from VESA mounting kit.
2. Be sure nylon screws are backed off, so that they do not cause an interference while sliding the VESA plate.
3. While pulling down the plunger, slide VESA plate and Cart Adapter into the Mounting Plate Assembly.
4. Release plunger and continue sliding Adapter until Plunger snaps into clearance hole, then tighten the Nylon locking screws on the Mounting Plate
5. Place generator (MIST Therapy) onto Adapter plate, line up the rubber feet to mating holes.



## Cable Management

Two (2) Cable Clips are provided for managing cables along Roll Stand Post. Place loose cables inside Clip and slide Clip onto Post as shown.



## **Routine Maintenance**

Periodically inspect all fasteners associated with the mounting system. Tighten as necessary for optimal operation and safety.

### **Cleaning the Mounting Assembly**

1. The mounting assembly may be cleaned with most mild, non-abrasive solutions commonly used in the hospital environment (e.g. diluted bleach, ammonia, or alcohol solutions).
2. The surface finish will be permanently damaged by strong chemicals and solvents such as acetone and trichloroethylene.
3. Do not use steel wool or other abrasive material to clean the mounting assembly.
4. Damage caused by the use of unapproved substances or processes will not be covered by warranty. We recommend that you test any cleaning solution on a small area of the mounting assembly that is not visible to verify compatibility.
5. Never submerge the roll stand or allow liquids to enter the mounting assemblies. Wipe any cleaning agents off the mounting assembly immediately using a water-dampened cloth. Dry all mounting assemblies thoroughly after cleaning.

**CAUTION:** GCX makes no claims regarding the efficacy of the listed chemicals or processes as a means for controlling infection. Consult your hospital's infection control officer or epidemiologist. To clean or sterilize mounted instruments or accessory equipment, refer to the specific instructions delivered with those products.