

## GCX Mounting Assembly Installation Guide

\*Pole or Channel Hanger for Philips Remote Speedpoint

The purpose of this guide is to:

1. Describe attachment of guide bushings to remote speedpoint.
2. Describe mounting of Hanger on Pole.
3. Describe attachment of Slide to remote speedpoint and mounting in channel.

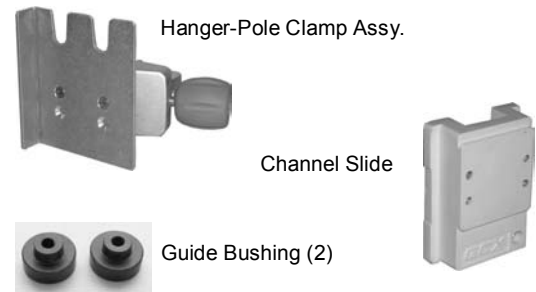
\*Fits pole diameters from 0.75" [19 mm] to 1.5" [38 mm].



### Parts Reference

The following parts and hardware are included with this installation kit (major components identified in photo):

Item #	Description	Qty
1	Hanger-Pole Clamp Assembly	1
2	Guide Bushing	2
3	#10 Flat Washer	2
4	M4 x 12mm Pan Head Machine Screw (PHMS)	2
**5	Channel Slide	1
**6	#10 x 1/2" Flat Head Sheet Metal Screw (FHSMS)	4
**7	1/8" Hex Key	1

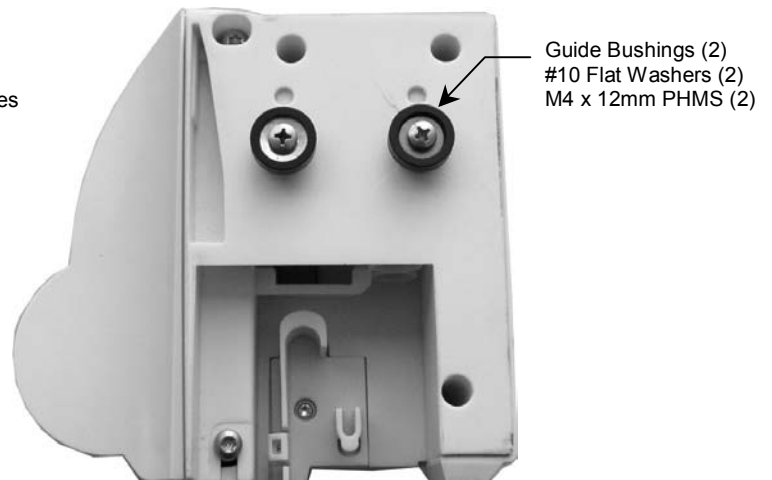
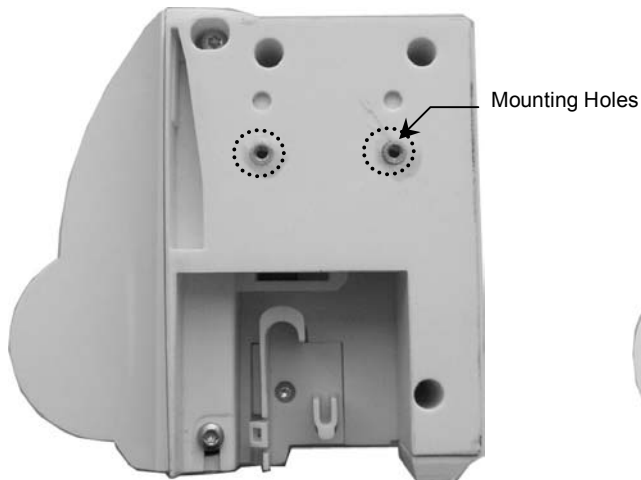


\*\*Wall Mount Only.

**Tools Required:** Phillips screwdriver, 1/8" hex key (provided).

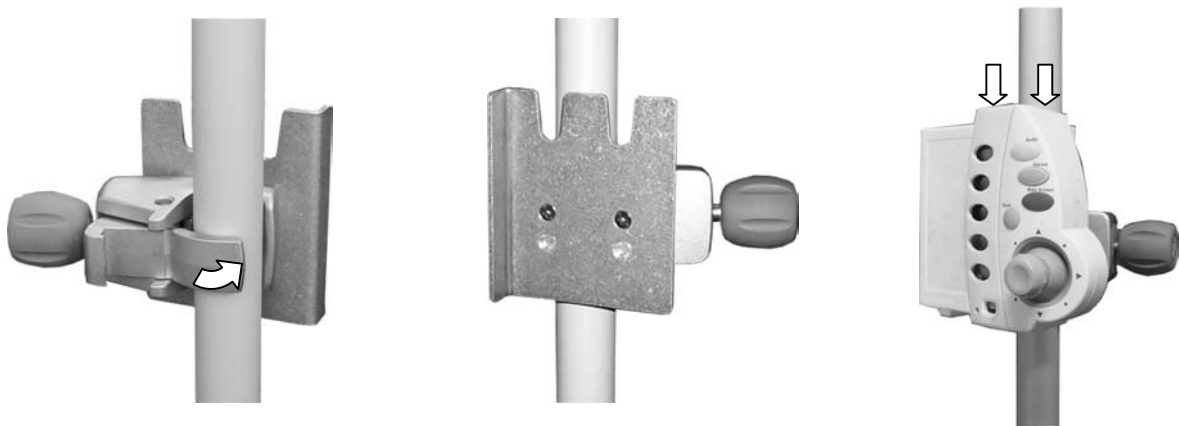
### Attaching Guide Bushings to Rear Side of Remote Speedpoint

1. Insert one (1) #10 flat washer in recessed side of each Guide Bushing.
2. Locate two (2) threaded mounting holes on rear of remote speedpoint (below left). Fasten Guide Bushings to remote speedpoint with two M4 x 12mm PHMS (below right).



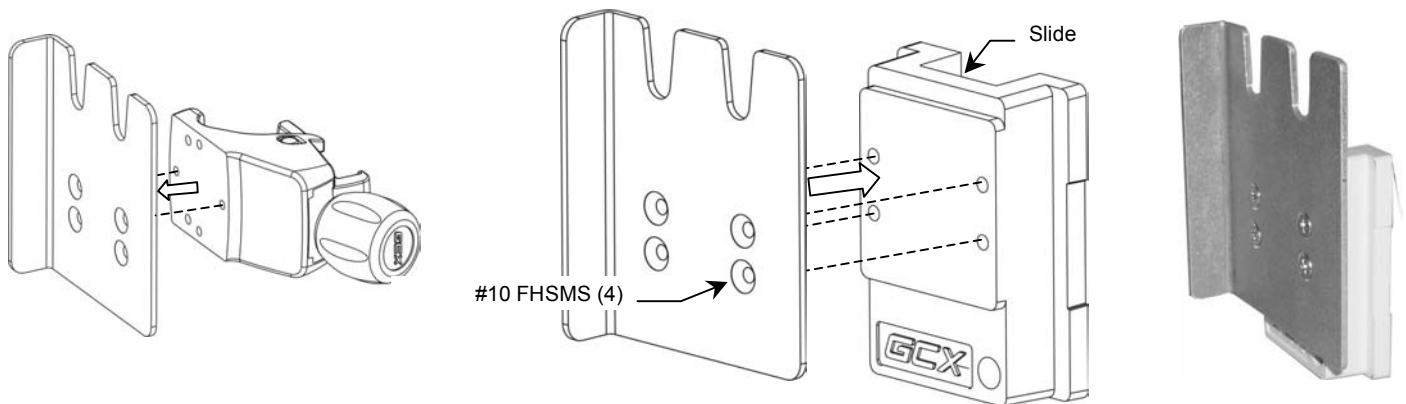
### Mounting Hanger on Pole (.75" [19 mm] to 1.5" [38 mm] Dia.)

1. Open Clamp by turning knob counterclockwise (CCW). Position Clamp around pole and turn Knob clockwise (CW) to tighten.
2. Mount the Remote Speedpoint by guiding the Bushings into the slots in top of the Hanger.



### Mounting Remote Speedpoint in Wall Channel

1. Remove Hanger from Pole Clamp by unscrewing two (2) FHMS (below left).
2. Fasten Hanger to Slide with four (4) #10 x 1/2" FHSMS (below center).



3. Insert Slide in Channel and move to desired mounting position. Tighten set screw with 1/8" hex key provided.
4. Mount the Remote Speedpoint by guiding the Bushings into the slots in top of the Hanger.

