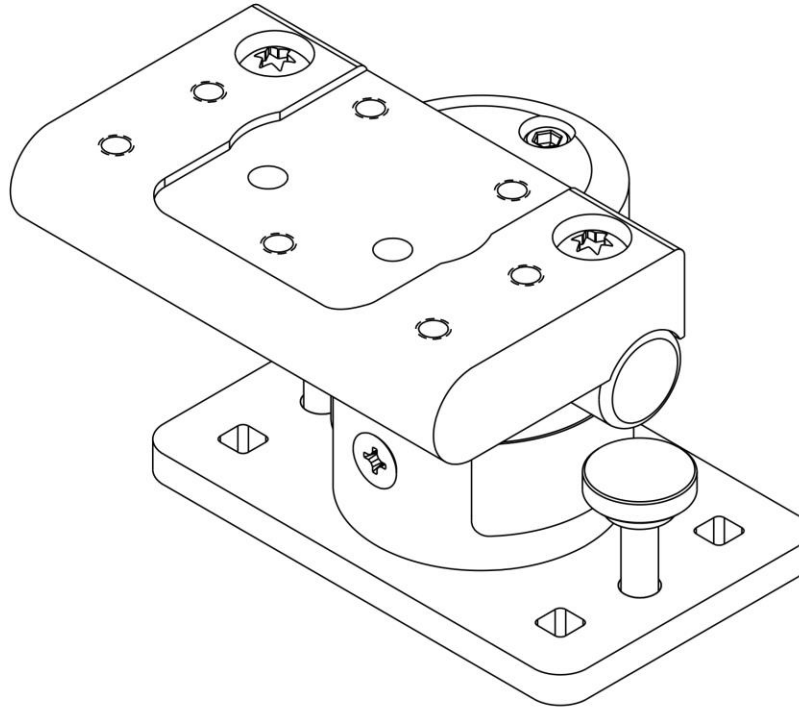


**Installation Guide**

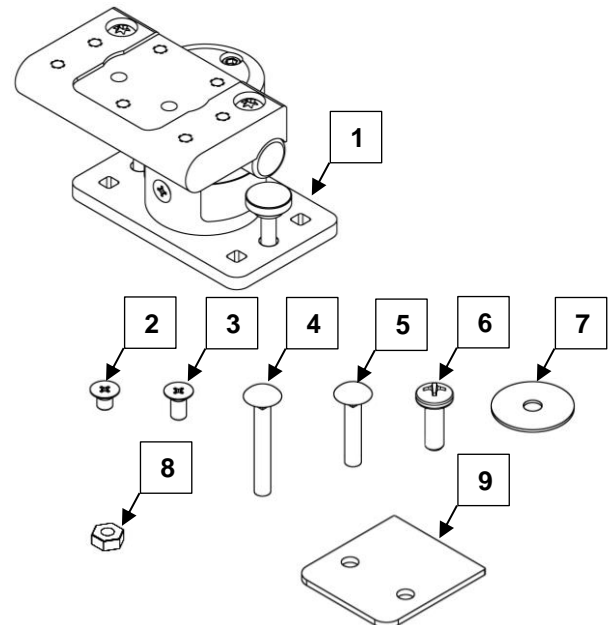
**Low Profile Countertop/Horizontal Channel Mount with Tilt/Swivel for IntelliVue MP5, MP20/30/40/50/60/70, MX400/450/500/550/600/700/800 (for Monitor Only)**



**Parts Reference**

The following parts and hardware are included in this installation kit:

Item #	Description	Qty.
1	Mount Assembly	1
2	M6 X 8mm Flat Head Machine Screw (FHMS)	2
3	M6 X 12mm Flat Head Machine Screw (FHMS)	1
4	1/4-20 X 1-3/4" Carriage Bolt	4
5	1/4-20 X 3/4" Carriage Bolt	4
6	M6 X 16mm Pan Head Machine Screw (PHMS)	2
7	1-1/4" Flat Washer	4
8	1/4-20 Kep Nut	4
9	Spacer	1

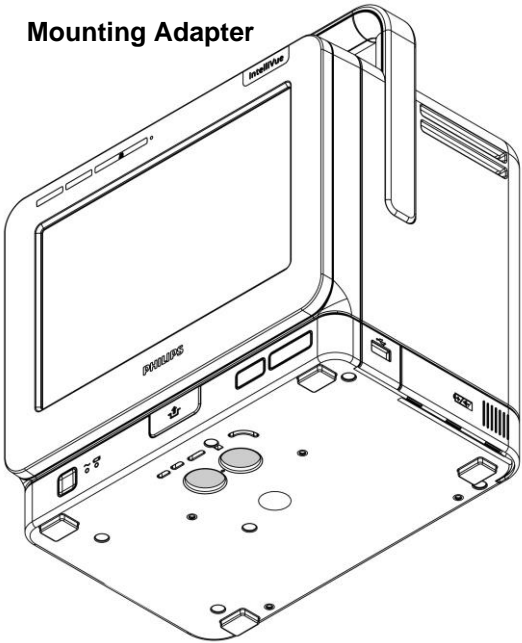


**Tools Required:**

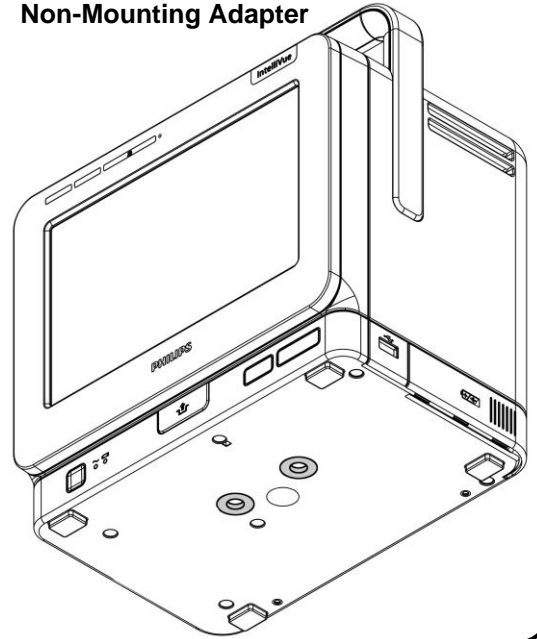
- 5/32" Hex Wrench (Provided)
- Phillips Screwdriver (Not provided)
- Drill with 17/64" Drill Bit (Not provided)
- 7/16" Wrench (Not provided)

**Installation Note:** Do not attach the Table Top Mount to the Arm/Mounting Adapter if you will be mounting an MP20/30 monitor equipped with the mounting interface shown in photo (right). See "Attaching Mounting assembly to Counter Top" (page 3) for instructions specific to this type of mounting plate.

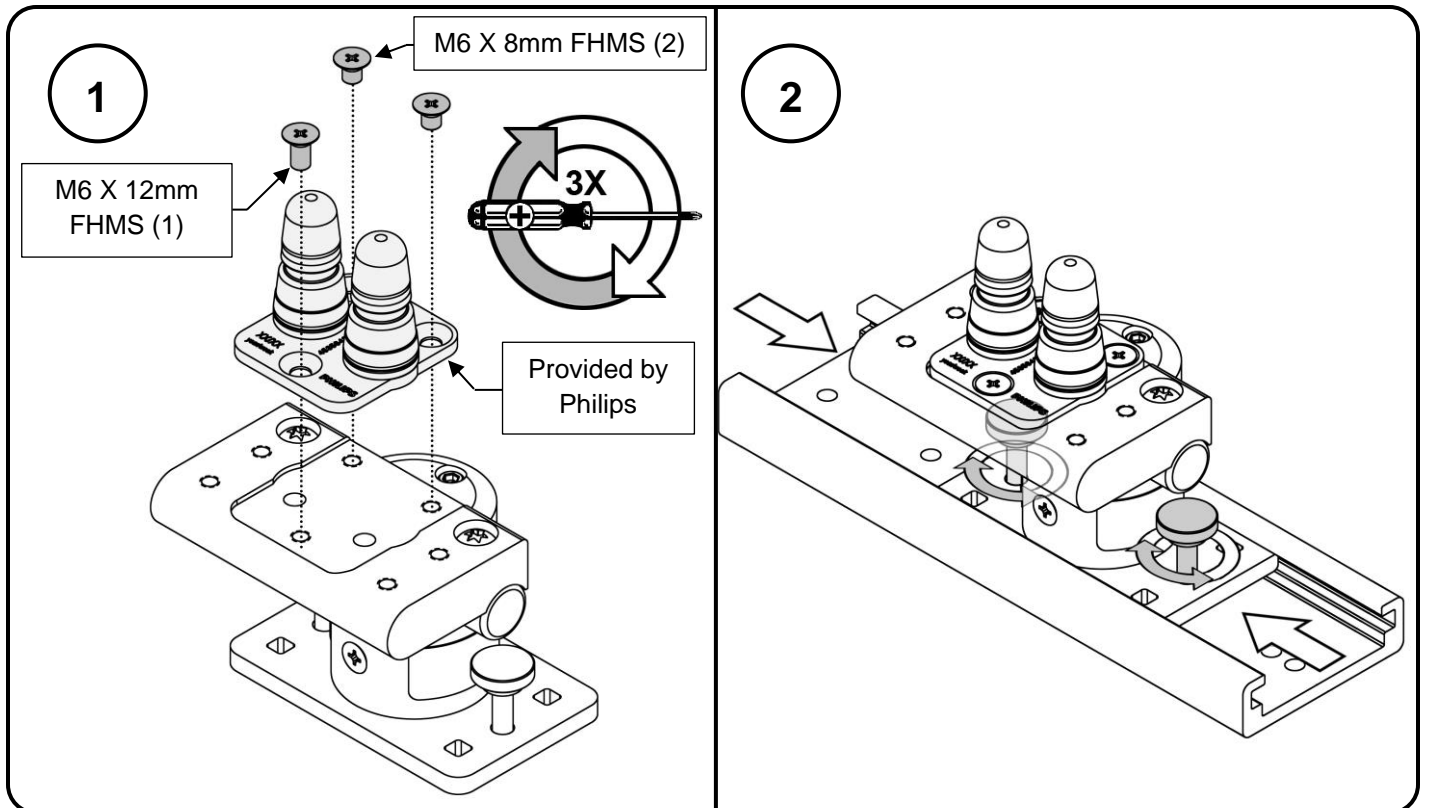
**Mounting Adapter**

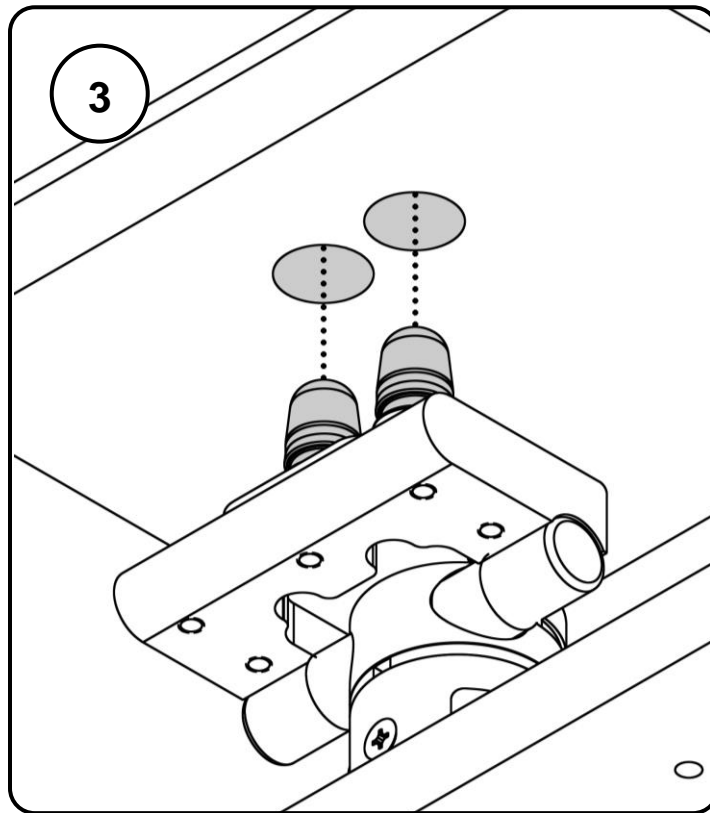


**Non-Mounting Adapter**

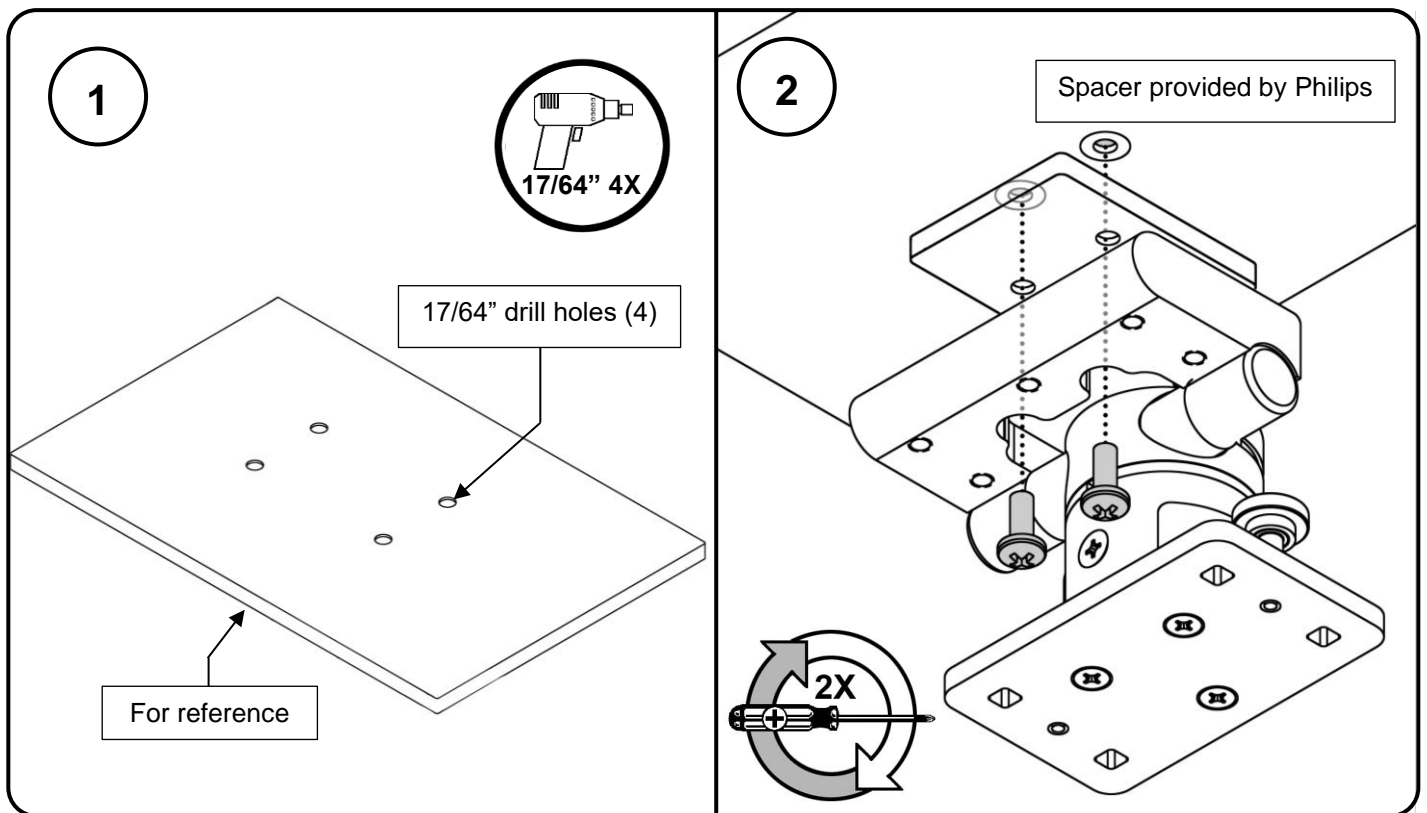


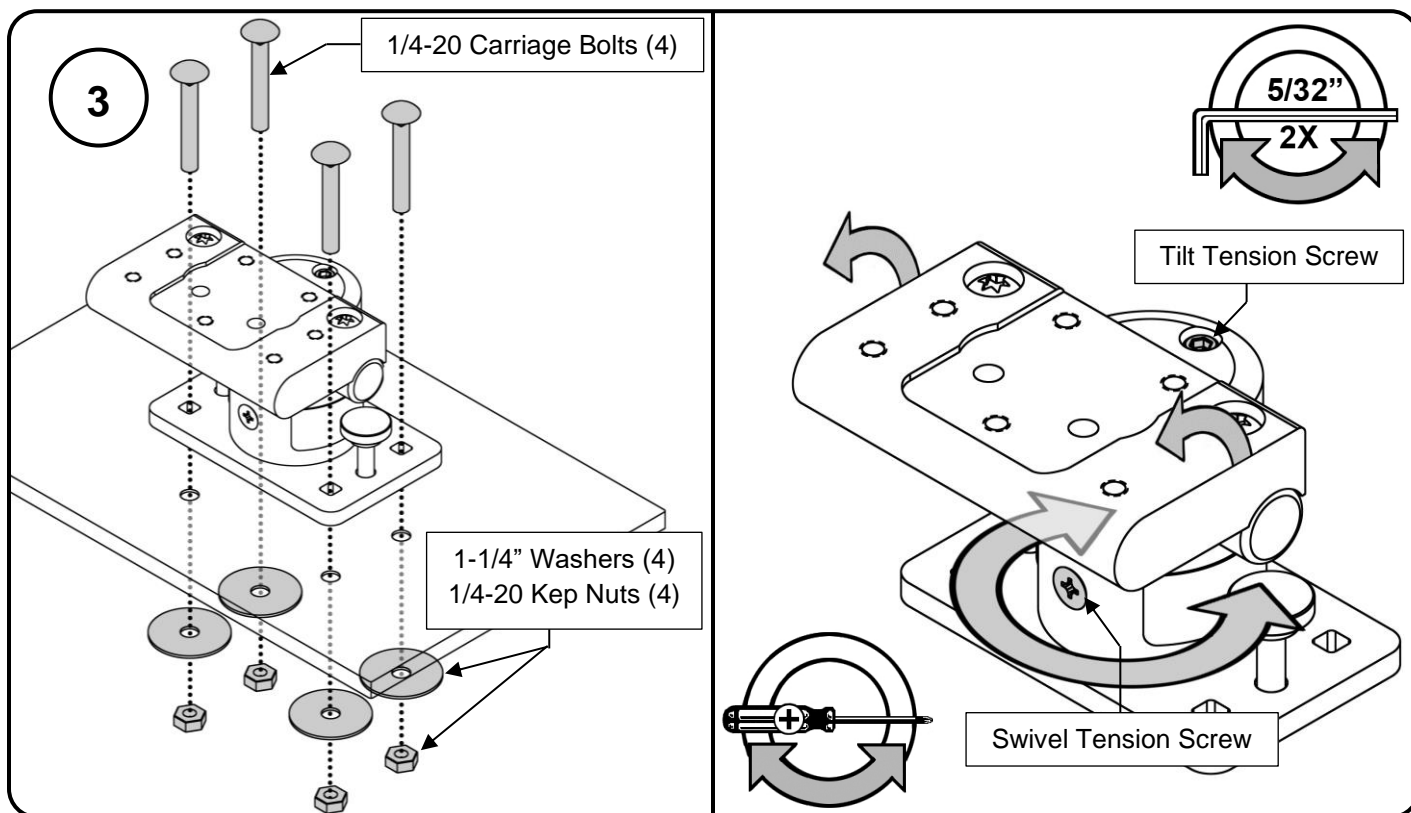
**Attaching the Table Top Mount to the Mounting Adapter**





Attaching Mounting assembly to Counter Top





### Routine Maintenance

Periodically inspect all fasteners associated with the mounting assembly. Tighten or Adjust as necessary for optimal operation and safety.

### Cleaning the Mounting Assembly

The mounting assembly may be cleaned with most mild, non-abrasive solutions commonly used in the hospital environment (e.g. diluted bleach, ammonia, or alcohol solutions).

The surface finish will be permanently damaged by strong chemicals and solvents such as acetone or trichloroethylene.

Steel wool or other abrasive material should never be used.

Damage caused by the use of unapproved substances or processes will not be warranted. We recommend testing of any cleaning solution on a small area of the mounting assembly that is not visible to verify compatibility.

Never submerge or allow liquids to enter the mounting assembly. Wipe any cleaning agents off the mounting assembly immediately using a water-dampened cloth. Dry the assembly thoroughly after cleaning.

**CAUTION:** GCX makes no claims regarding the efficacy of the listed chemicals or processes as a means for controlling infection. Consult your hospital's infection control officer or epidemiologist. To clean or sterilize mounted devices or accessory equipment, refer to the specific instructions delivered with those products.