

Installation Guide

7"/17.8cm Channel with 10 x 25-40mm Horizontal Rail Clamp



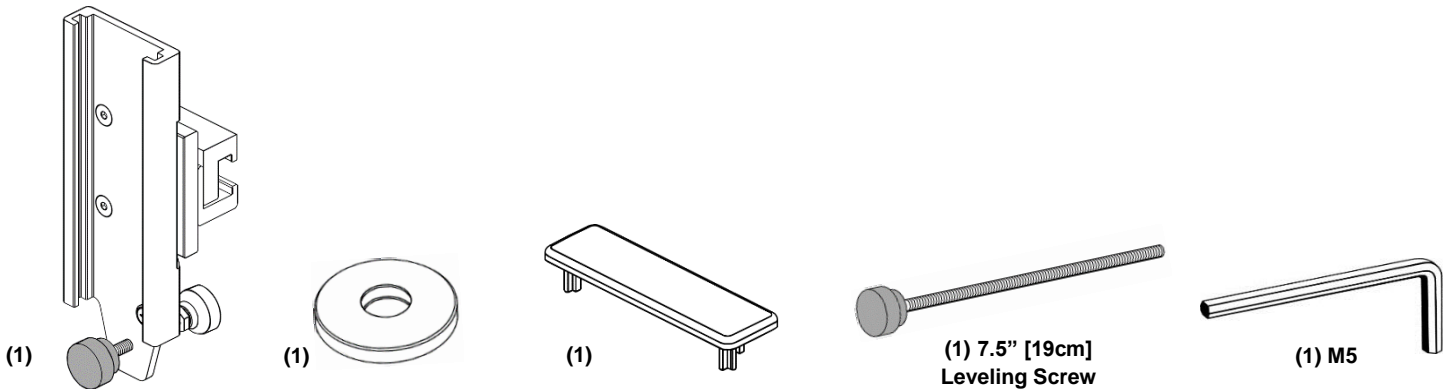
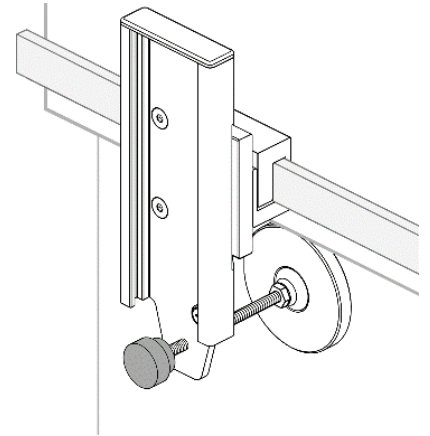
WARNING: Channel for Horizontal Rail Weight Limit.

Max load capacity 60lbs [27.2 kg] (measured at channel).

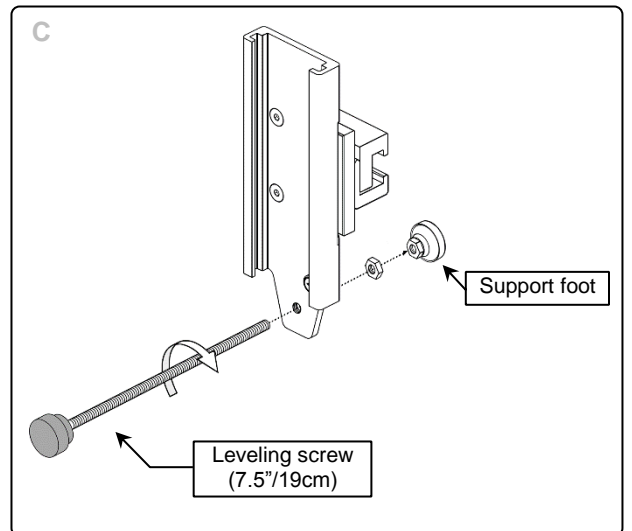
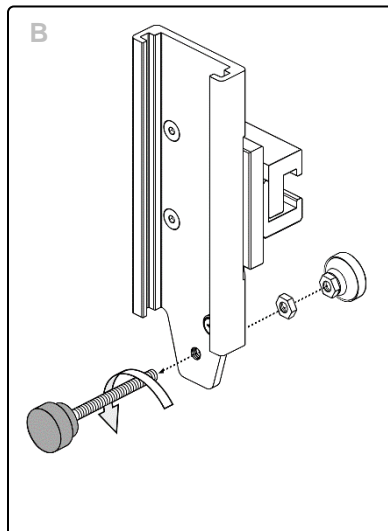
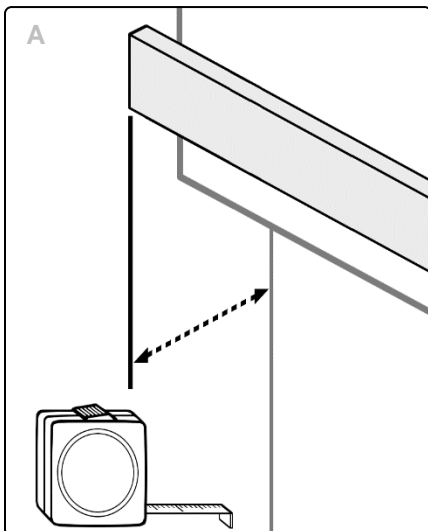
Max moment load 2200 in-lbs [248N-m] (45lbs x 48" offset from channel).

Clamp accommodates rectangular horizontal rails 10mm x 25-40mm and features a leveling support foot to stabilize the channel.

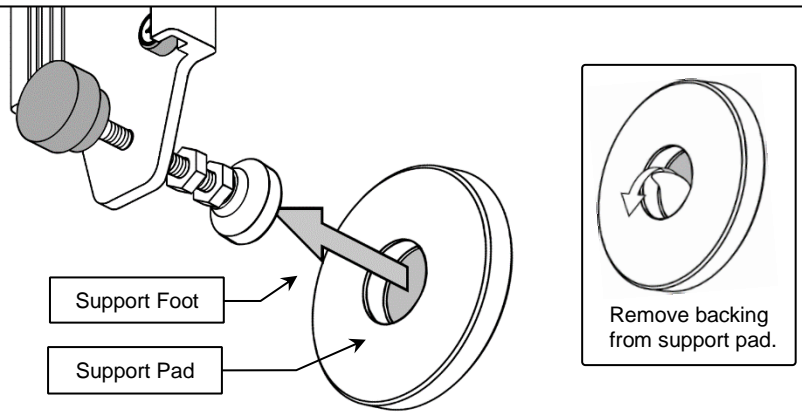
Check manufacturer's weight limit for the horizontal rail prior to installing Channel and related equipment. Failure to follow the manufacturer's weight limits and warnings may result in damage to equipment or injury to personnel.



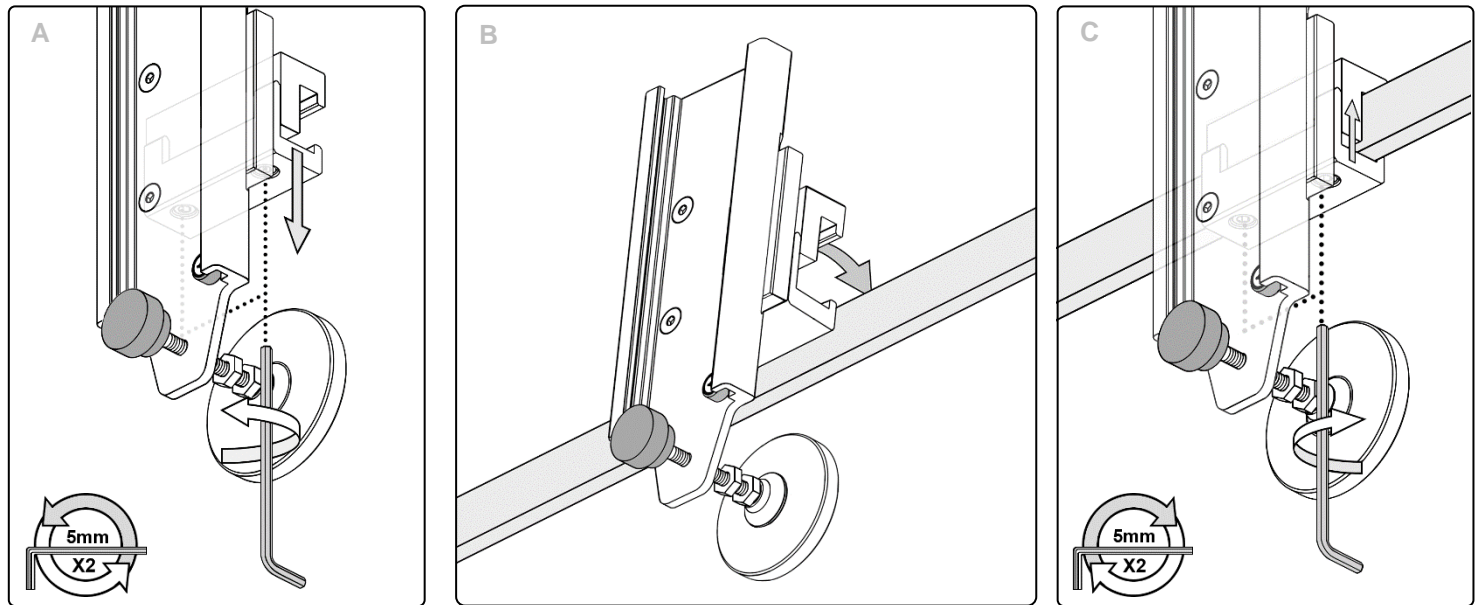
- 1 Determine distance from horizontal rail to adjacent vertical surface/wall (A). The channel is assembled with a 2.6" [6.6cm] long leveling screw (B). If that is not long enough to support the channel against the adjacent vertical surface, replace it with the 7.5" [19cm] screw (C).



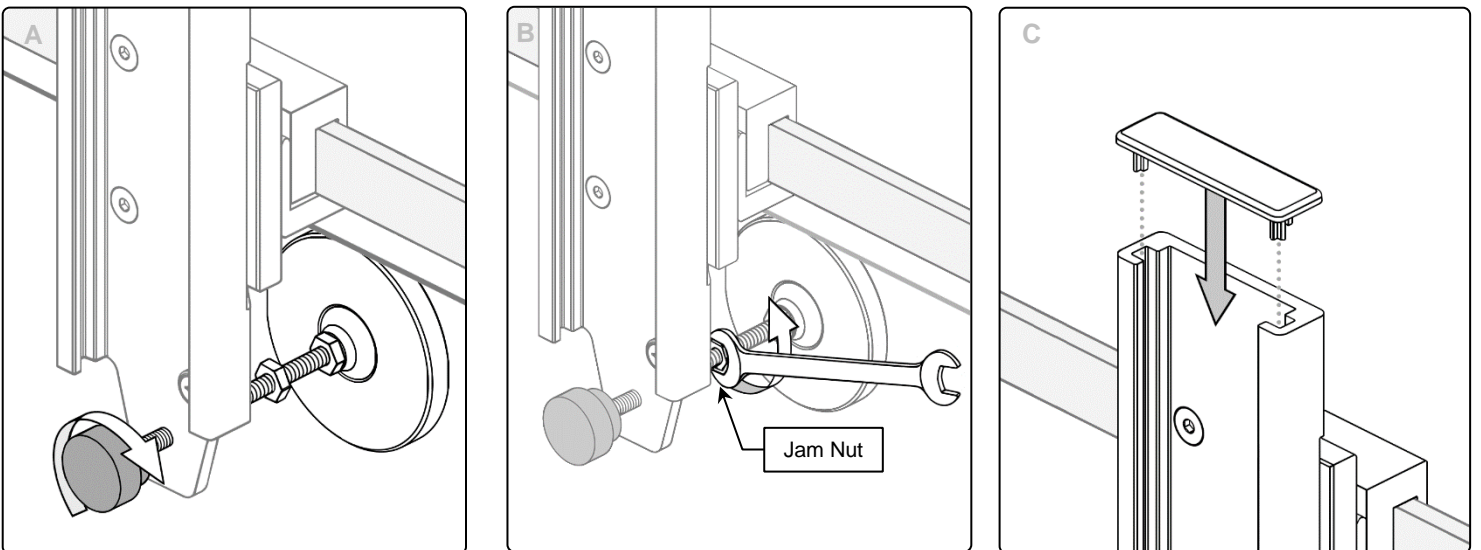
- 2** Remove self-adhesive backing from support pad and press on to the Leveling foot as shown. Firmly apply pressure for 30 seconds to ensure a good bond.



- 3** Determine vertical rail width (25-40mm) and loosen the two M6 SHCS with a 5mm hex wrench (A) enough so the rail can be inserted into the clamp (B). Tighten the two M6 SHCS so the clamp is secure on the horizontal rail (C).



- 4** Adjust the leveling support foot so it contacts the adjacent vertical surface/wall (A). Using a 1/2" (13mm) open end wrench, tighten the jam nut against back of channel (B). Insert cover in to top of channel (C).



Routine Maintenance

Periodically inspect all fasteners associated with the mounting system. Tighten or adjust fasteners as necessary for optimal operation and safety.

Cleaning the Mounting Assembly

1. The mounting assembly may be cleaned with most mild, non-abrasive solutions commonly used in the hospital environment (e.g. diluted bleach, ammonia, or alcohol solutions).
2. The surface finish will be permanently damaged by strong chemicals and solvents such as acetone or trichloroethylene.
3. Do not use Steel wool or other abrasive material.
4. Damage caused by the use of unapproved substances or processes will not be warranted. It is recommended that you test any cleaning solution on a small area of the mounting assembly that is not visible to verify compatibility.
5. Never submerge or allow liquids to enter the mounting assembly. Wipe any cleaning agents off of the assembly immediately, using water dampened cloth. Dry the assembly thoroughly after cleaning.

CAUTION: GCX makes no claims regarding the efficacy of the listed chemicals or processes as a means for controlling infection. Consult your hospital's infection control officer or epidemiologist. To clean or sterilize mounted devices or accessory equipment, refer to the specific instructions delivered with those products.