

GCX Mounting Assembly Installation Guide

Philips M3 Recorder – Mounting Assembly for 1.25" Roll Stand Post or 1" Pole

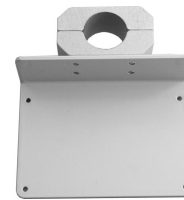
The purpose of this guide is to describe attachment of Mounting Bracket to M3 Recorder and mounting of Recorder on roll stand post or 1" pole.

Parts Reference

The following parts and hardware are included with this installation kit (see photo for parts, hardware not shown):

Item #	Description	Qty
1	Mounting Bracket Assembly (Post Clamp Attached)	1
2	#4-40 x 5/16" Pan Head Machine Screw (PHMS)	4
3	1" Pole Adapter	1
4	1/4-20 x 1-1/2" Socket Head Cap Screw (SHCS)	2
5	5/32" Hex Key	1

Mounting Bracket Assembly
(Post Clamp Attached)

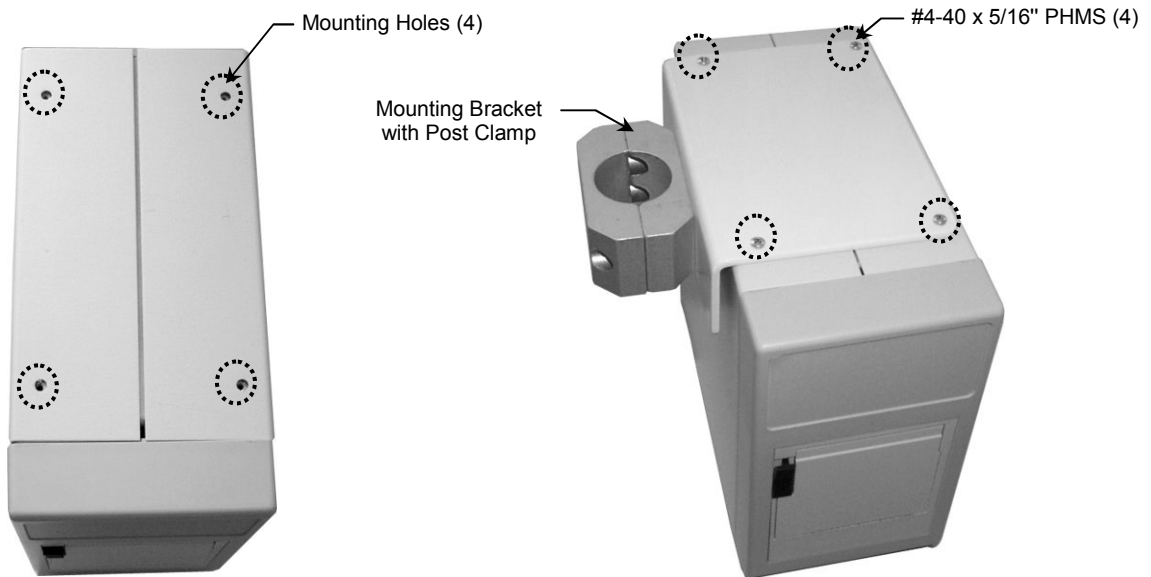


1" Pole Adapter

Tools Required: Phillips screwdriver, 5/32" hex key (provided).

Attaching Mounting Bracket to Recorder

1. Turn Recorder upside down and remove four (4) existing mounting screws (or feet if attached) from the bottom housing (not shown).
2. The mounting side of the Bracket may be positioned on either the left or right side of the Recorder depending on application requirements. Align the mounting holes in the Bracket with the threaded holes in the bottom of the Recorder and attach the Mounting Bracket to the Recorder using four (4) #4-40 x 5/16" PHMS.

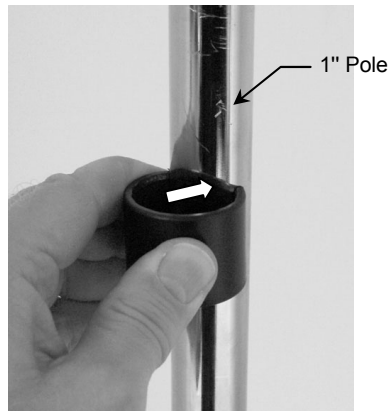


Mounting the Recorder

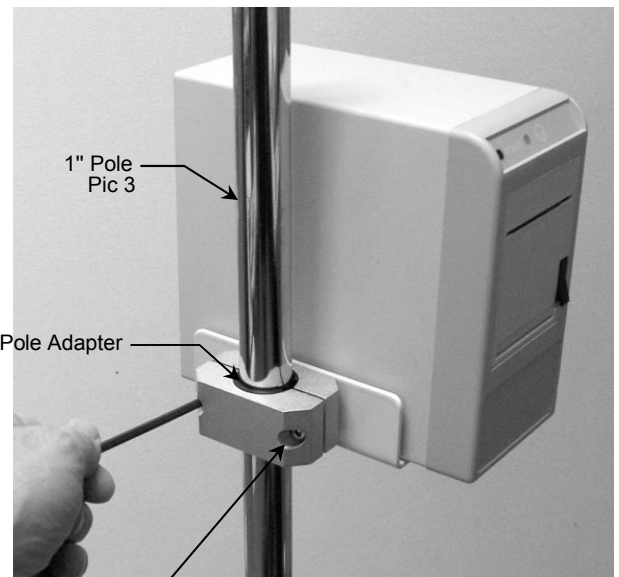
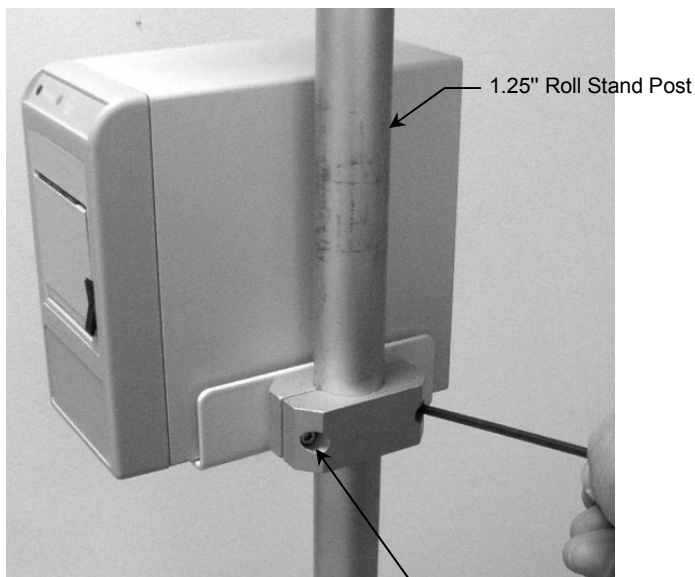
1. Remove the rear half of the Post Clamp by unscrewing the two (2) #10-32 x 5/8" SHCS (not shown).

Installation Note for 1" (Diameter) Pole Mounting Only: An Adapter is included in this installation kit for mounting the M3 Recorder on a 1" Pole. If mounting the Recorder on a 1" Pole, push the Adapter onto the Pole and proceed to Step 2.

1" Pole Adapter



2. Position the Recorder/Post Clamp on the Roll Stand Post. **Installation Note:** If mounting on 1" Pole, ensure that the required Adapter is positioned between Clamping Blocks. Using the 5/32" hex key, re-attach the rear half of the Clamp with the two (2) #10-32 x 5/8" SHCS.



Cleaning the Mounting Assembly

1. The mounting assembly may be cleaned with most mild, non-abrasive solutions commonly used in the hospital environment (e.g., diluted bleach, ammonia, or alcohol solutions).
2. The surface finish will be permanently damaged by strong chemicals and solvents such as acetone and trichloroethylene.
3. Steel wool or other abrasive material should *never* be used.
4. Damage caused by the use of unapproved substances or processes will not be covered under warranty. It is recommended that you test any cleaning solution on a small area of the arm that is not visible, to verify compatibility.

CAUTION: GCX makes no claims regarding the efficacy of the listed chemicals or processes as a means for controlling infection. Consult your hospital's infection control officer or epidemiologist. To clean or sterilize mounted devices or accessory equipment, refer to the specific instructions delivered with those products.