

GCX Mounting Assembly Installation Guide

Philips V24 Monitor Roll Stand Kit



The purpose of this guide is to:

1. Describe attachment of Post to Base.
2. Describe attachment of Utility Basket to Post.
3. Describe attachment of Handle to Post.
4. Describe attachment of Satellite Rack to Post.
5. Describe attachment of Quick Release Base to Post.

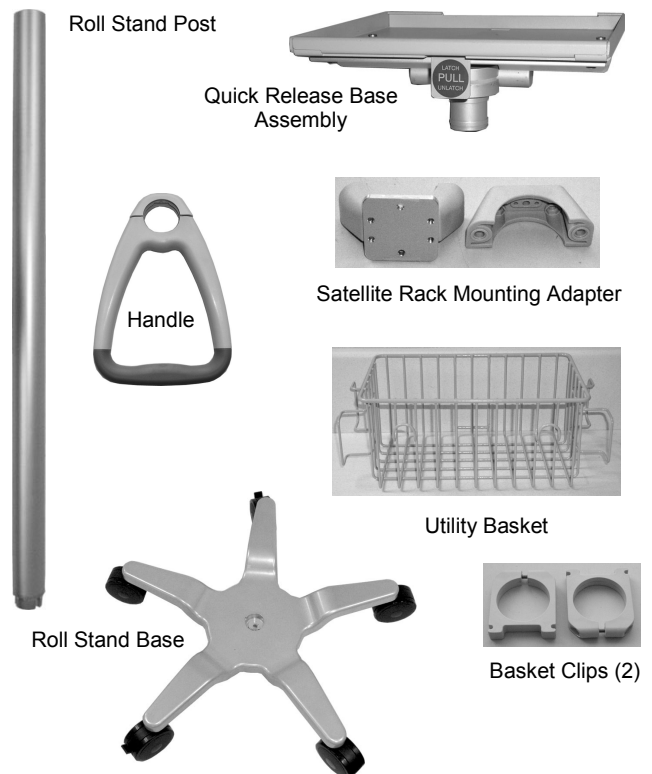


WARNING: USE OF THIS STAND FOR INSTRUMENTS OTHER THAN THOSE DESCRIBED IN THIS DOCUMENT MAY RESULT IN INJURY DUE TO TIPPING OF THE ROLL STAND. THE CUSTOMER SHOULD VERIFY THE STABILITY OF ANY DEVIATION FROM THE CONFIGURATIONS SHOWN.

Parts Reference

The parts list below includes only the parts and hardware that will be used in this installation procedure (see photos for parts; hardware not shown).

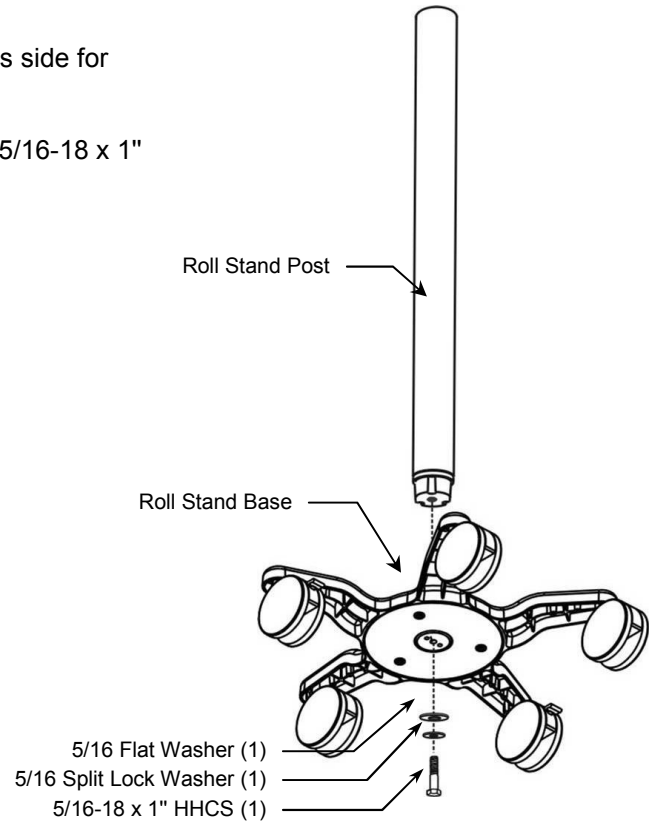
Item #	Description	Qty
1	Roll Stand Post, 38"	1
2	Roll Stand Base	1
3	5/16-18 x 1" Hex Head Cap Screw (HHCS)	1
4	5/16 Flat Washer	1
5	5/16 Split Lock Washer	1
6	Utility Basket	1
7	Basket Clips	2
8	#8-32 x 1-1/2" Pan Head Machine Screw (PHMS)	2
9	#8-32 Hex Nut	2
10	Quick Release Base Assembly	1
11	Handle	1
12	#10-32 x 9/16" PHMS	4
13	FMS Roll Stand Mounting Adapter (Clamping Blocks)	1
14	M4 x 12mm PHMS	2
15	5/32" Hex Key	1
16	2.5mm Hex Key	1



Tools Required: Phillips screwdriver, 5/32" [4mm] and 2.5mm hex keys (provided), 1/2" [13mm] wrench.

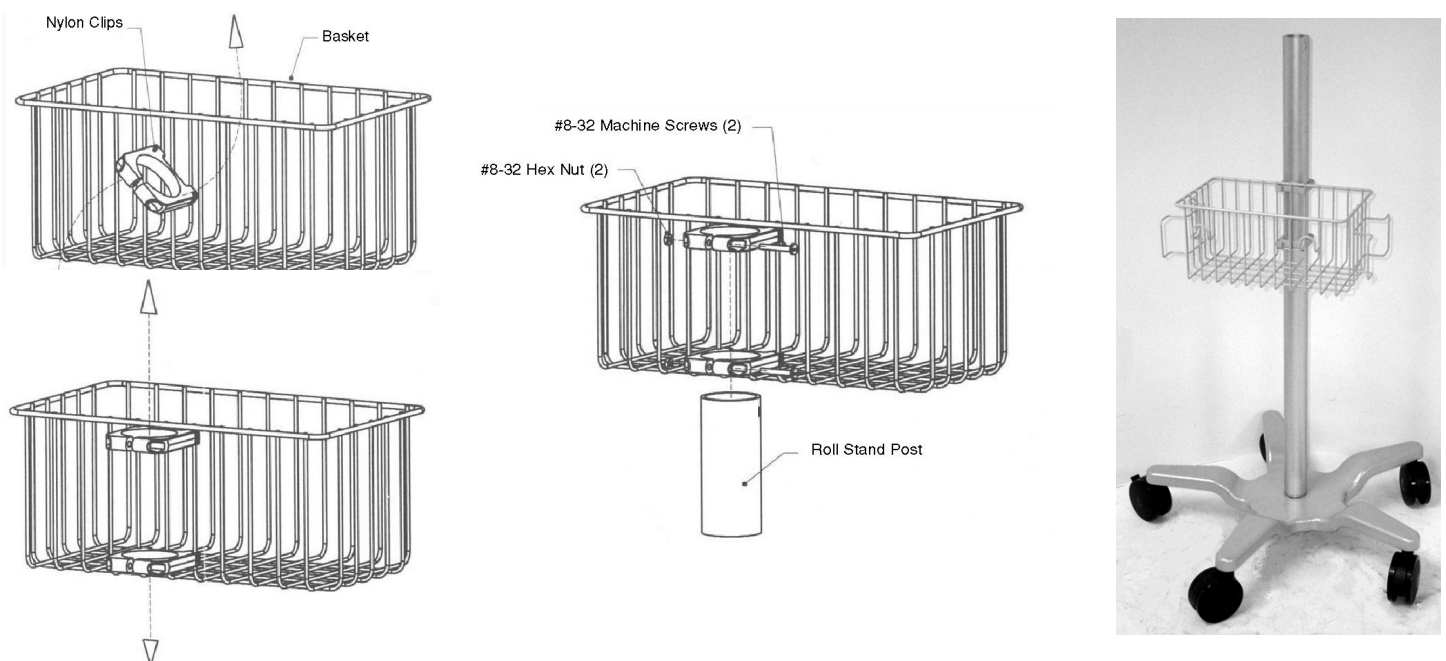
Attaching Roll Stand Post to Base

1. Insert Roll Stand Post in center of Base and lay assembly on its side for access to bottom of Base.
2. Using a 1/2" [13mm] wrench, fasten Post to Base with one (1) 5/16-18 x 1" HHCS, 5/16 split lock washer, and 5/16" flat washer.



Attaching Utility Basket to Roll Stand

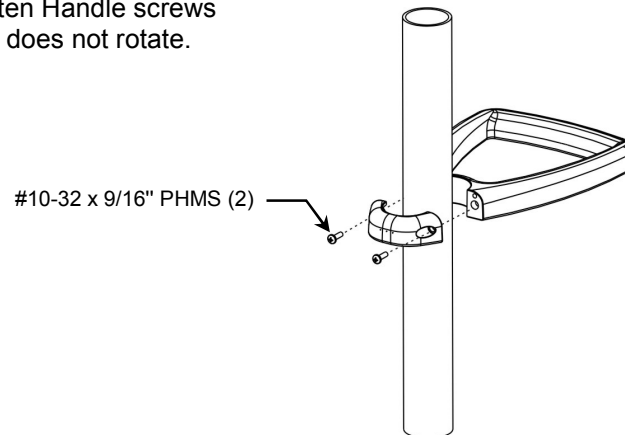
1. Insert each Basket Clip at an angle, in rear center of Basket, and rotate until horizontal (left illustrations). **Note:** Rear of Basket is identified by horizontal wire spanning three (3) wires at bottom of Basket. Slide Clips to top and bottom of basket. Top Clip should be touching top horizontal wire, and bottom Clip should be touching lower reinforcing wire.
2. Slide Clips (Basket attached) over Roll Stand Post and move Basket to mounting position on Post (center illustration). Assemble two (2) #8-32 x 1-1/2" PHMS and hex nuts in Clips and tighten until Basket does not rotate on Post.



Attaching Roll Stand Handle

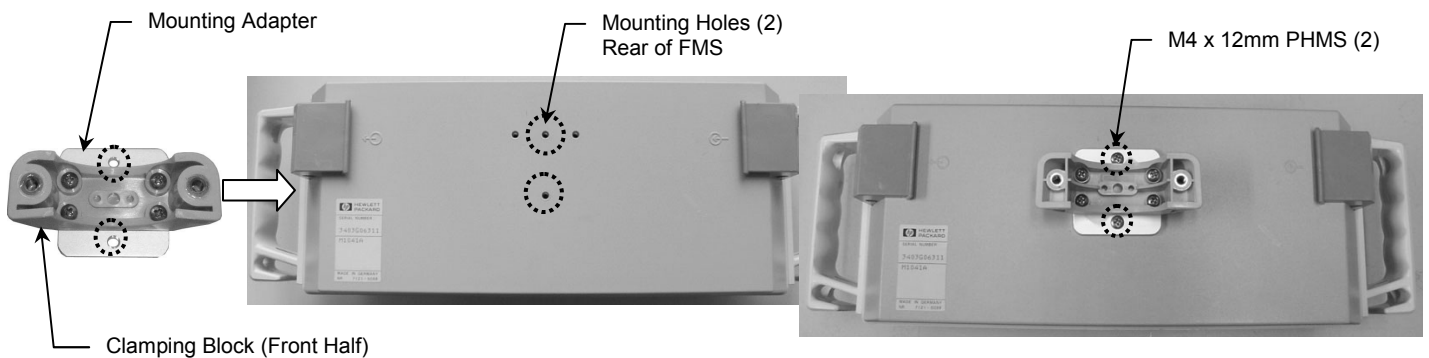
1. Attach Handle to Roll Stand Post using two (2) #10-32 x 9/16" PHMS as shown in illustration below.

Installation Note: Alternately tighten Handle screws until Handle is secure on post and does not rotate.

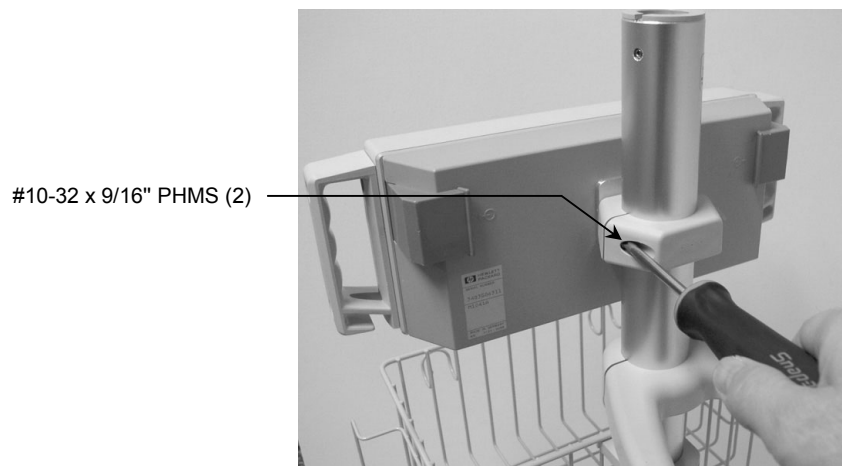


Mounting Satellite Rack on Roll Stand Post

1. Align two (2) mounting holes in Roll Stand Mounting Adapter with threaded mounting holes in rear of Satellite Rack. Attach Adapter to Rack using two (2) M4 x 12mm PHMS.



2. Position Rack on Roll Stand Post. Fasten rear half of Clamping Block to front with two (2) #10-32 x 9/16" PHMS (below left). Alternately tighten screws until Rack is secure on post and does not rotate.



Attaching Quick Release Base Assembly to Roll Stand Post

1. Insert Quick Release Base Assembly in top of Roll Stand Post. Press downward while twisting until Assembly snaps into place. **Note:** Adjustment procedures are found on page 5.



Mounting Monitor in Quick Release Base

1. Pull and hold PULL-Spring Tab, set monitor in Quick Release Base, then release PULL Tab. Ensure that feet on bottom of monitor are secured by the front and rear lips of the Pan.

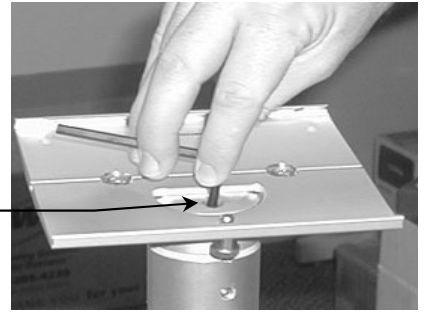


Adjusting Tilt Tension and Swivel Tension

Tilt tension is adjusted by tightening or loosening the socket set screw on the top of the Roll Stand Post. A 5/32" hex key is provided for this adjustment.

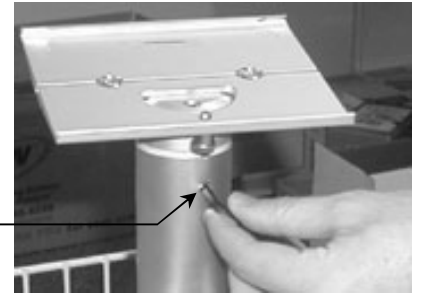
Note: Quick Release Base must be removed from Mounting Plate to adjust tilt tension.

Tilt Tension Adjustment



Swivel tension is adjusted by tightening or loosening socket set screw on side of Roll Stand Post immediately below the Mounting Plate Assembly. A 2.5mm hex key is provided for this adjustment.

Swivel Tension Adjustment



Routine Maintenance

Periodically check all tilting, swiveling, and mounting hardware. Tighten as necessary for optimal operation.

Cleaning the Mounting Assembly

Caution: GCX makes no claims regarding the efficacy of the listed chemicals or processes as a means for controlling infection. Consult your hospital's infection control officer or epidemiologist. To clean or sterilize mounted instruments or accessory equipment, refer to the specific instructions delivered with those products.

1. The mounting assembly may be cleaned with most mild, non-abrasive solutions commonly used in the hospital environment (e.g. diluted bleach, ammonia, or alcohol solutions).
2. The surface finish will be permanently damaged by strong chemicals and solvents such as acetone and trichloroethylene.
3. Steel wool or other abrasive material should *never* be used.
4. Damage caused by the use of unapproved substances or processes will not be warranted. It is recommended that you test any cleaning solution on a small area of the arm that is not visible, to verify compatibility.