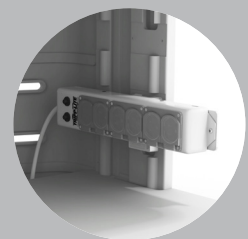




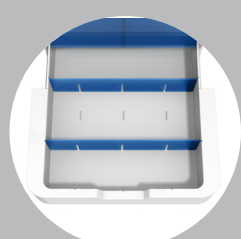
ACCESSORIES



Hospital Grade Power Strip



Barcode Scanner Mount



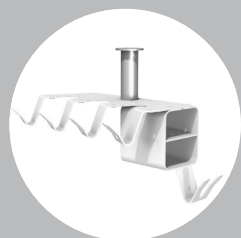
Drawers with Dividers



CPU Mounts



Easily Mounted Telemetry



Patient Lead Organizer

GCX[®]

Healthcare Solutions

For more than 50 years, GCX Healthcare Solutions and subsidiaries, like Jaco, Inc., have been empowering clinicians to achieve optimal patient outcomes. GCX offers hospitals, medical equipment distributors, and medical device manufacturers safe, comfortable, and ergonomic mounting and mobility solutions that support proper usage of medical and IT devices in a variety of environments. As an ISO 13485 and FDA-registered company, GCX has an excellent track record for design innovation, product quality, and customer service.



GE HEALTHCARE Fetal Monitoring MOUNTING SOLUTIONS



The space-saving and mobile design consolidates all bedside technology in a single solution.



ON-SITE SERVICES

Ask us about our expert assembly and maintenance programs.

www.gcx.com

AMERICAS

+1 800 228 2555
+1 707 773 1100
Petaluma, California
United States

EMEA

+31 (0) 88 627 26 00
Tilburg
The Netherlands

APAC

+886 2 2298 2842
New Taipei City
Taiwan

GCX quality management processes are ISO 13485:2003 certified. GCX, PolyMount, and PolyQuip are registered trademarks, and VHRC, VHC, VHIM, VHRS, PRC, M Series, and Stor-Lock are trademarks, of GCX Corporation. All other brand names, product names, or trademarks belong to their respective holders. © Copyright 2023

FETAL MONITORING WORKSTATIONS

ACHIEVE OPTIMAL WORKFLOW BY COMBINING FETAL MONITORING AND EMR HARDWARE IN A SINGLE SOLUTION

The GCX fetal monitoring workstation is an efficient, configurable solution that combines fetal monitoring and EMR hardware on a single bedside cart — consolidating technology while minimizing footprint within the room.

The fetal monitoring workstation can be configured and reconfigured as needed on site to accommodate a wide variety of workflows and ergonomic device positioning needs. Monitors, display, accessories, supplies, and EMR hardware are all integrated cleanly with cables concealed for greater access and safety.

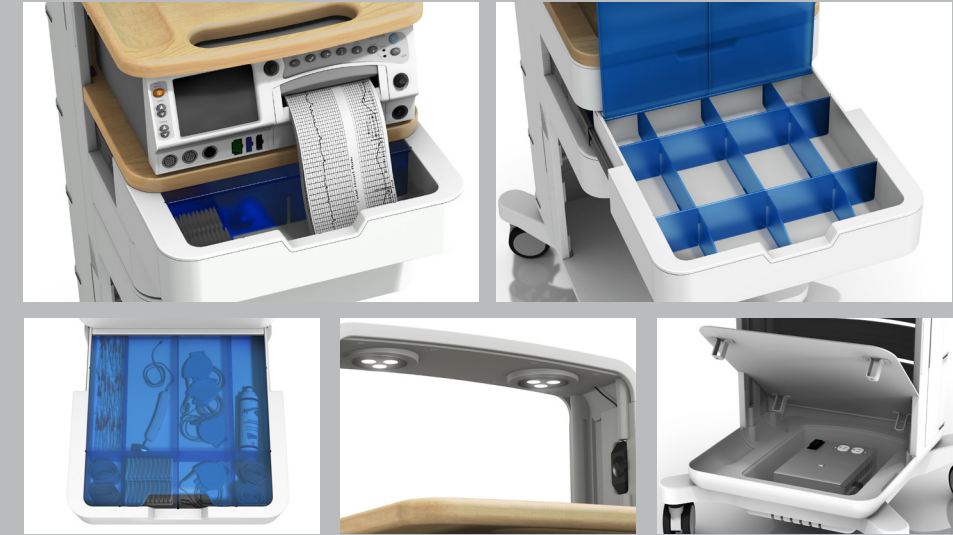
Every workstation features wide, shallow drawers that allow for ample storage space so supplies and accessories can be quickly found or replenished. The base provides additional space to store a CPU, UPS or isolation transformer. The appealing design of the workstation complements the look and professionalism of the labor and delivery environment.



OPTIONS

- Right or Left Mounted Workstation
- Second (Trending) Screen Mount
- Fixed or Variable Height Options
- Telemetry Arm
- Bar Code Scanner Mount
- Patient Lead Organizer
- LED Worksurface Lights
- Medical Grade Power Strip

FEATURES AND BENEFITS



Organized Supplies

Removable drawer dividers; up to 12 compartments. Transparent lid catches fetal printer paper.

Cable Management

Manage and conceal cables with no tools required.

Storage

Utility baskets, up to 6 drawers, and in-base storage.

Ergonomic

Fully configurable, ergonomic design supports multiple users.

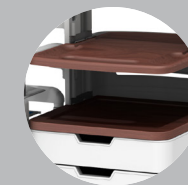
Flexible and Modular

Easy removal/re-positioning of drawers, monitors, shelves, and IT hardware.

IT + EMR

Multiple options for integrating IT and EMR hardware in a single solution.

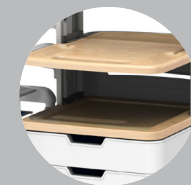
TABLE TOP OPTIONS



Cherry Blossom



Cloud Gray



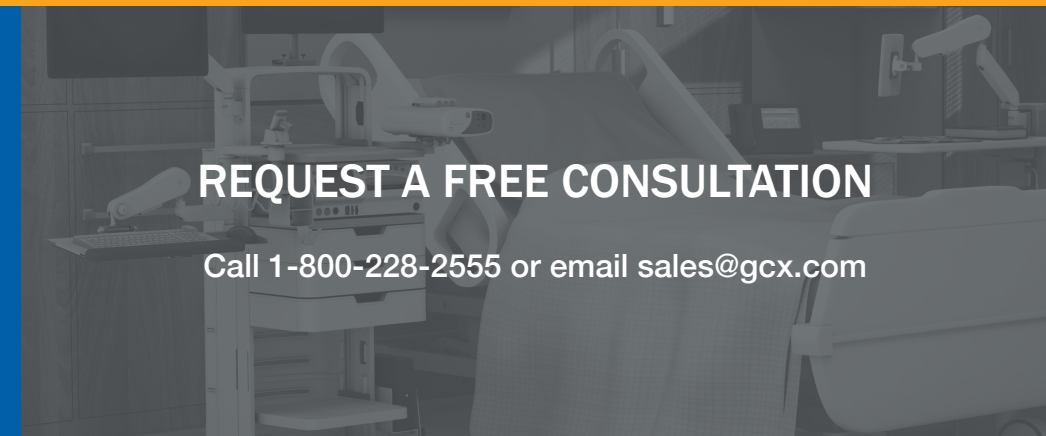
Light Maple



Valencia



The equipment and supplies are neatly organized, and I can get the whole cart out of the way quickly when I need to.



REQUEST A FREE CONSULTATION

Call 1-800-228-2555 or email sales@gcx.com