

GCX Mounting Assembly Installation Guide**M-Series Pivot Arm (12-inch) for Dual LCD's – Vertical Mounting**

The purpose of this guide is to:

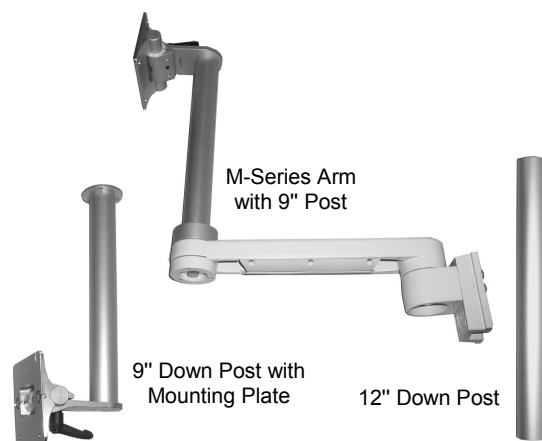
1. Describe replacement of the 9" down post with a 12" down post
2. Describe mounting and adjustment of the M-Series Arm Assembly.

Parts Reference

The parts list below includes parts and hardware that will be used in this installation procedure (see photos for parts; hardware not shown).

Item #	Description	Qty
1	M-Series Arm (12") with 9" Post/Mounting Plate	1
2	Down Post (9") with Mounting Plate	1
3	#10-32 x 3/8" Socket Head Cap Screw (SHCS)	3
4	Down Post, 12"	1
5	Adjustable Stop	1
*6	VESA Adapter Kit (with Separate Installation Guide)	2
7	Wall Channel Cover (with Separate Installation Guide)	1
8	5/32" Hex Key	1
9	9/64" Hex Key	1
10	1/8" Hex Key	1

* Required for display with 100 x 100mm mounting pattern on rear housing.

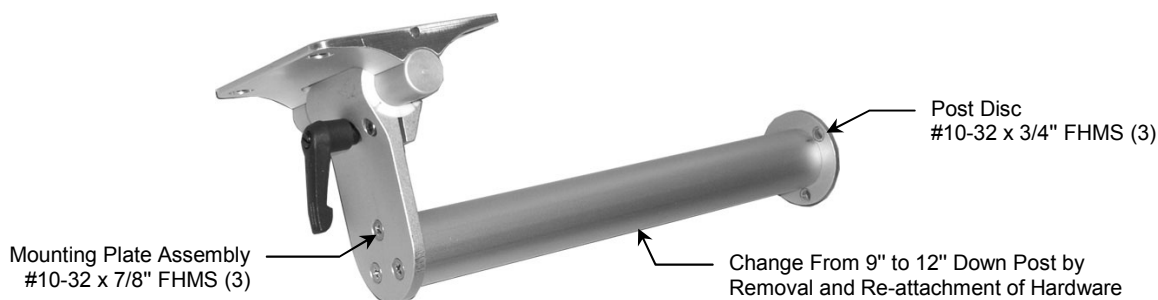


Tools Required: Phillips screwdriver, 5/32", 1/8", and 9/64" hex keys (hex keys provided).

Installation Note: This installation kit allows vertical mounting of two (2) VESA-compatible flat panel displays with enclosures up to 18" in height (not diagonal measurement). For display heights larger than 18", one (1) 12" Down Post is included and requires the modification on this page. Skip the modification procedure if your application does not require mounting of a larger display.

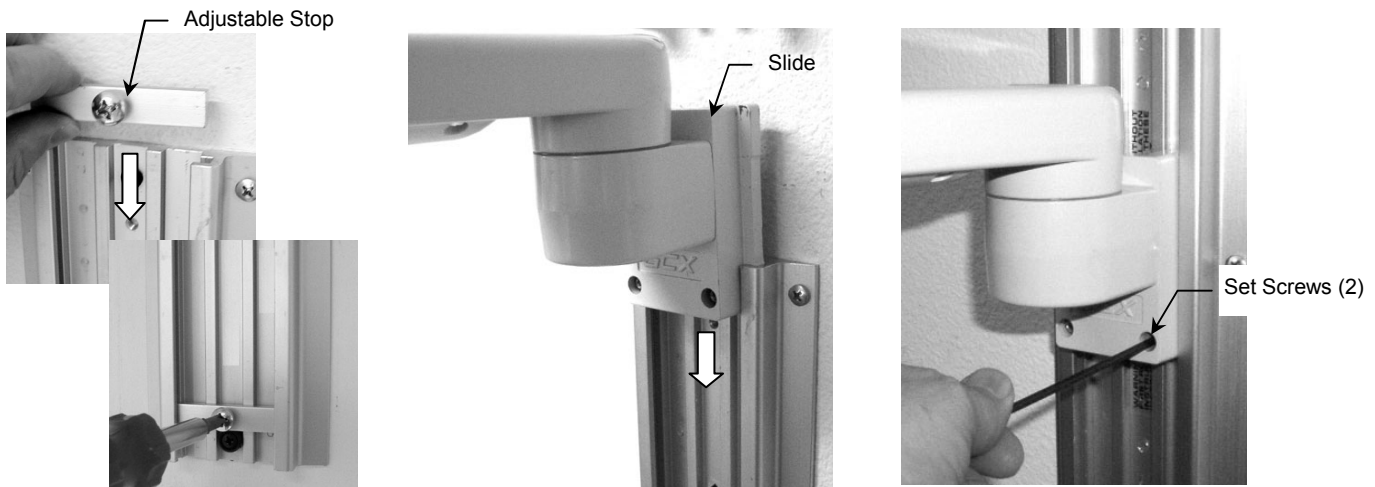
Down Post Modification for Larger Flat Panel Displays

1. Remove Post Disc from end of 9" Down Post by unscrewing three (3) #10-32 x 3/4" flat head machine screws (FHMS). Using same screws, re-attach Post Disc to one end of 12" Post.
2. Remove Mounting Plate Assembly from 9" Down Post by unscrewing three (3) #10-32 x 7/8" FHMS. Using same screws, re-attach Mounting Plate Assembly to opposite end of 12" Post.



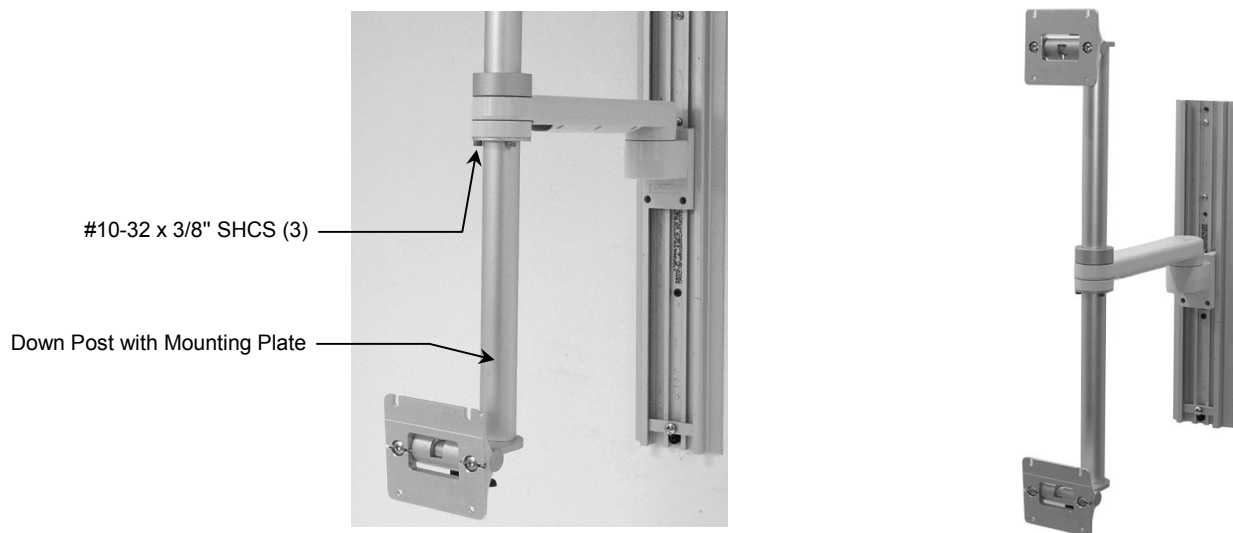
Mounting the Arm in the Channel

1. Insert the Adjustable Stop in the top opening of the wall channel (below left) and let it slide to the bottom of the channel. Secure the Adjustable Stop in the channel by tightening the screw in the center of the Stop.
2. While supporting the bottom of the Arm, guide the Slide (rear of Arm) into the top of the wall channel (below center). Slide the Arm to the desired position in the channel and tighten two (2) set screws (bottom of the Slide) using the 1/8" hex wrench (below right).



Attaching Down Post to Arm

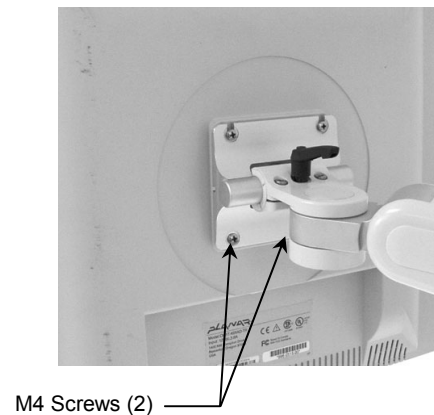
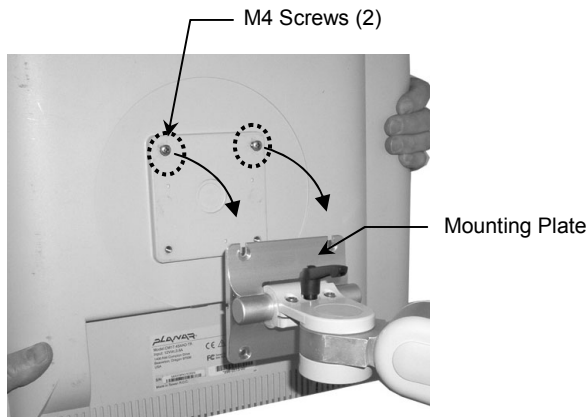
1. Using the 5/32" hex key, fasten the Down Post (Post Disc) to the bottom of the M-Series Arm with three (3) #10-32 x 3/8" SHCS.



Mounting a Flat Panel Display with a Typical 75 x 75mm VESA Mounting Pattern

This procedure is only for a display with 75 x 75mm mounting pattern (Mounting Adapter not required). If your display has a 100 x 100mm mounting pattern, mount the display according to separate installation guide titled: *GCX Mounting Assembly Installation Guide, 75 x 75mm to 100 x 100mm VESA® Flat Panel Mounting Adapter (DU-FLP-0002-17)*.

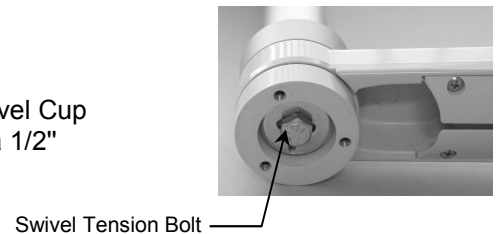
1. Determine which M4 PHMS (6mm and 10mm provided) is the appropriate length for the display being mounted.
2. Thread two (2) M4 screws into the top threaded holes of the 75 x 75mm mounting pattern, leaving 3mm of thread exposed. Lift the display onto the Mounting Plate by guiding the M4 screws into the slots in the Plate. Thread two (2) M4 screws into the bottom mounting holes. Tighten all mounting screws.



Swivel and Tilt Adjustments

Swivel: To swivel the mounted instrument simply push or pull the sides of the instrument.

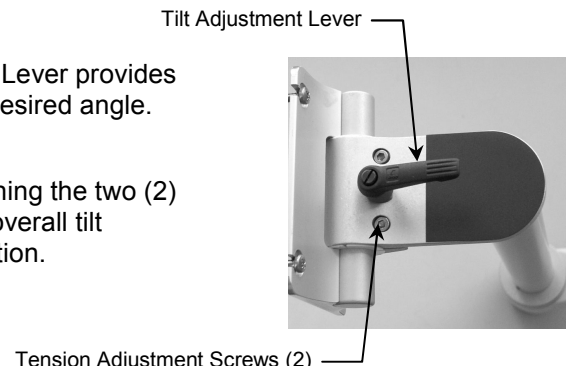
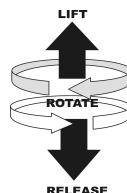
Swivel Tension: Remove the plastic bolt cap or existing Down Post from Swivel Cup (bottom of front end of Arm). Tighten or loosen the Swivel Tension Bolt using a 1/2" [13 mm] socket wrench.



Tilt: Turn the Tilt Adjustment Lever counterclockwise (CCW) to loosen. Lever provides ratchet-style adjustment (see **Note** below). Grasp the device and tilt to desired angle. Turn Tilt Adjustment Lever clockwise (CW) to tighten and lock position.

Tilt Tension: Adjust overall tilting tension by evenly tightening or loosening the two (2) Tension Adjustment Screws with the 9/64" hex key provided. Once the overall tilt tension is set, use the Tilt Adjustment Lever to fine tune/lock the tilt position.

Note: The Tilt Adjustment Lever is a multi-position clamping lever that operates by lifting, rotating, and releasing the handle.



Installing the Wall Channel Cover

Install the Wall Channel Cover in accordance with *Channel Cover Installation Guide (DU-UT-0001-20)*.