

Installation Guide

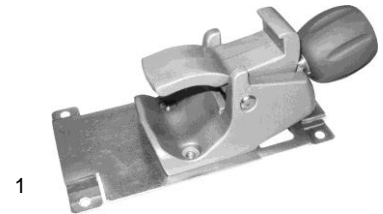
PRC Kit For Covidien Bedside Respiratory Patient Monitoring System



Parts Reference

The following parts and hardware are included in this installation kit (hardware not shown).

Item #	Description	Qty
1	Covidien adapter plate w/PRC Clamp	1
2	M5 x 12mm Pan Head Machine Screw (PHMS)	4



Tools Required:

- Phillips Screwdriver (not provided)

Attaching the adapter plate with PRC clamp

1. Using a Phillips screwdriver, attach the adapter plate with PRC clamp to the Covidien Bedside Respiratory Patient Monitor with (4) M5 x 12mm PHMS as shown below.

