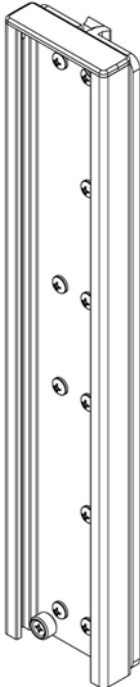




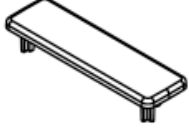
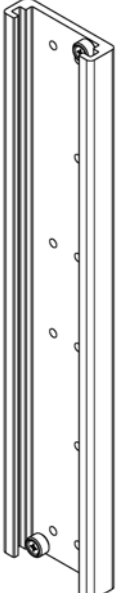


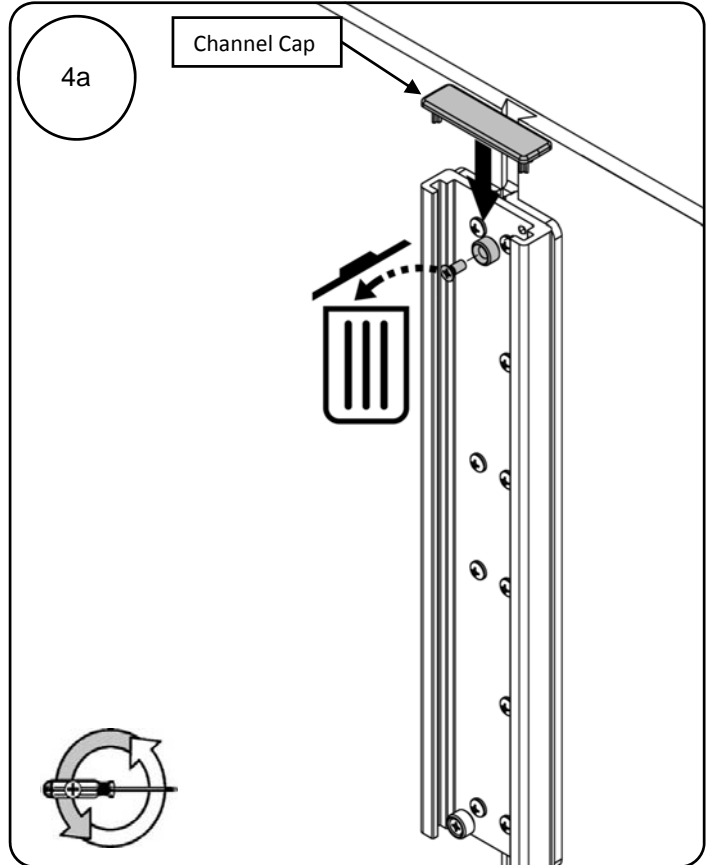
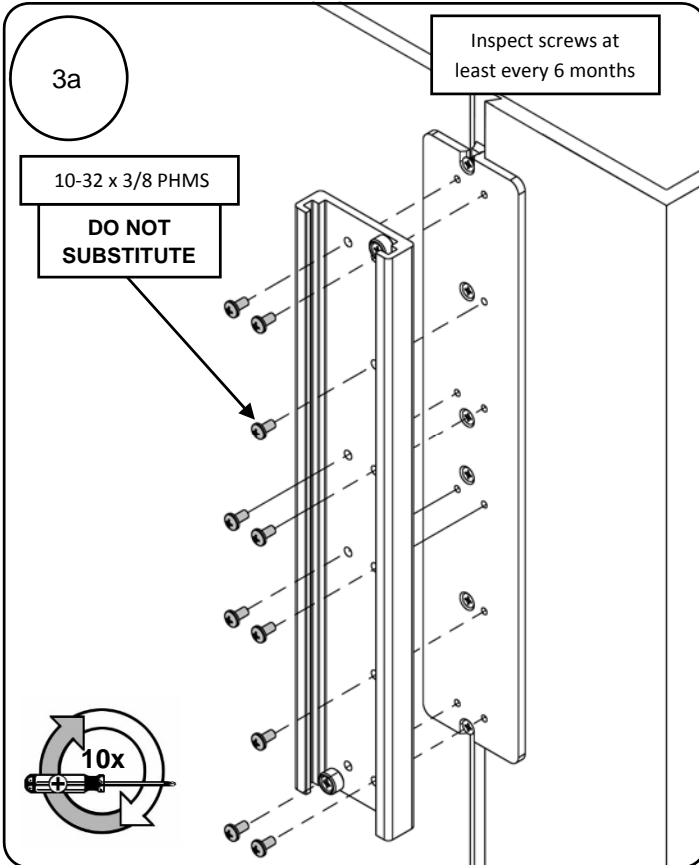
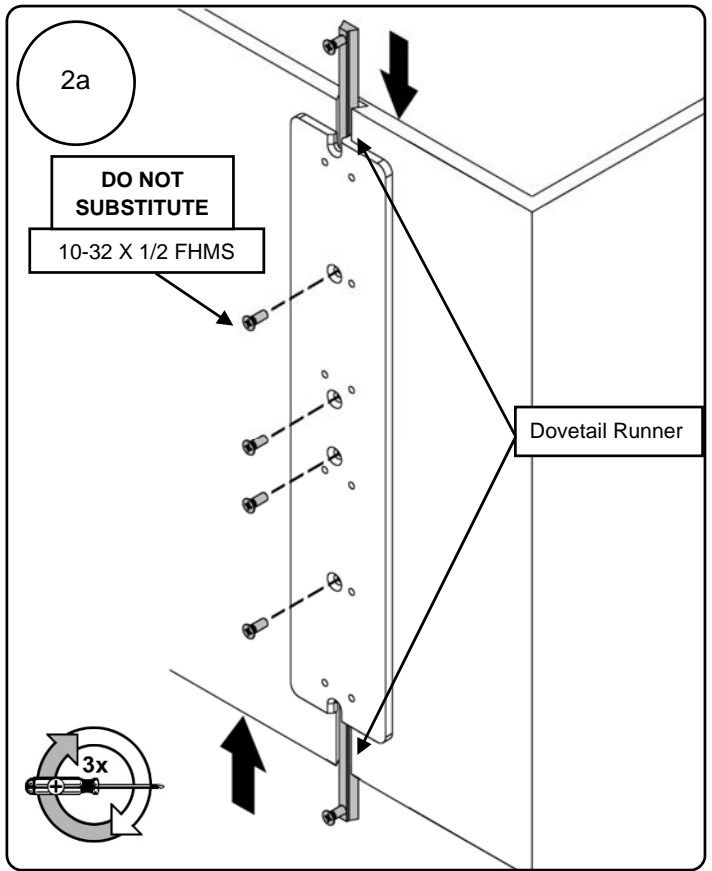
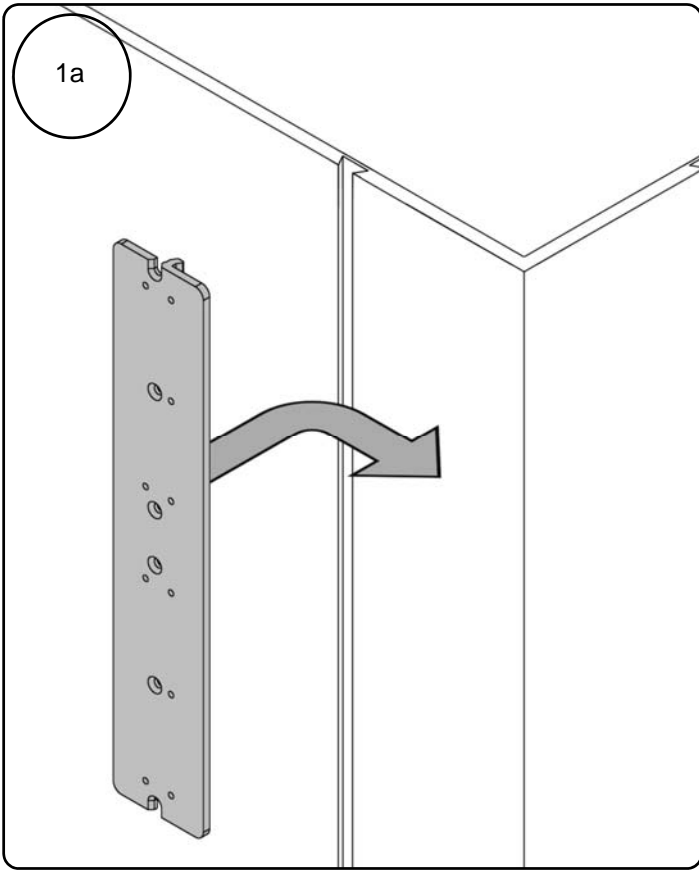
Installation Guide
Channel for Amico Single Vertical Track for VHM without extension
and VHM-P/PL without extension

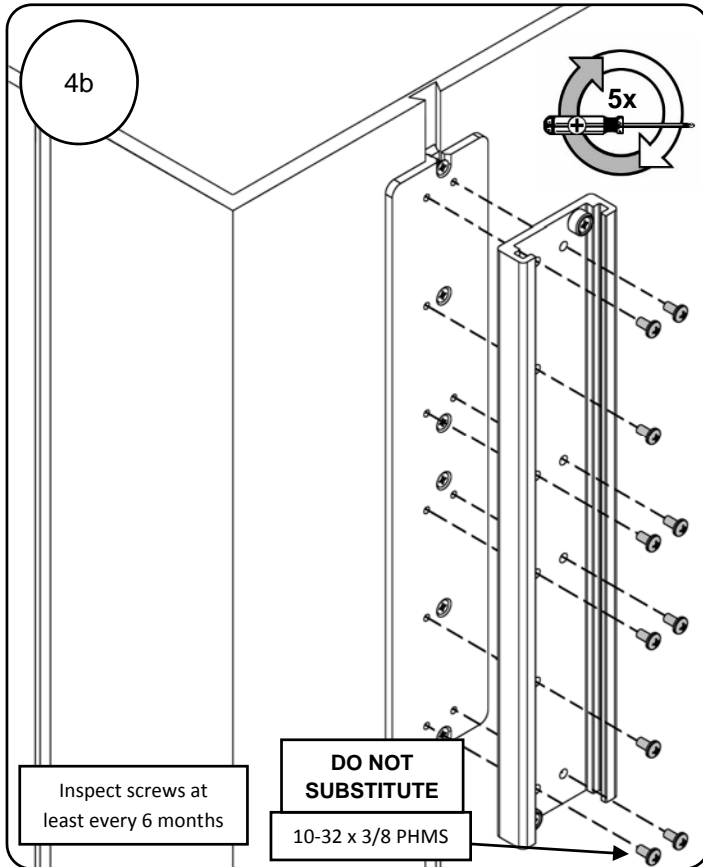
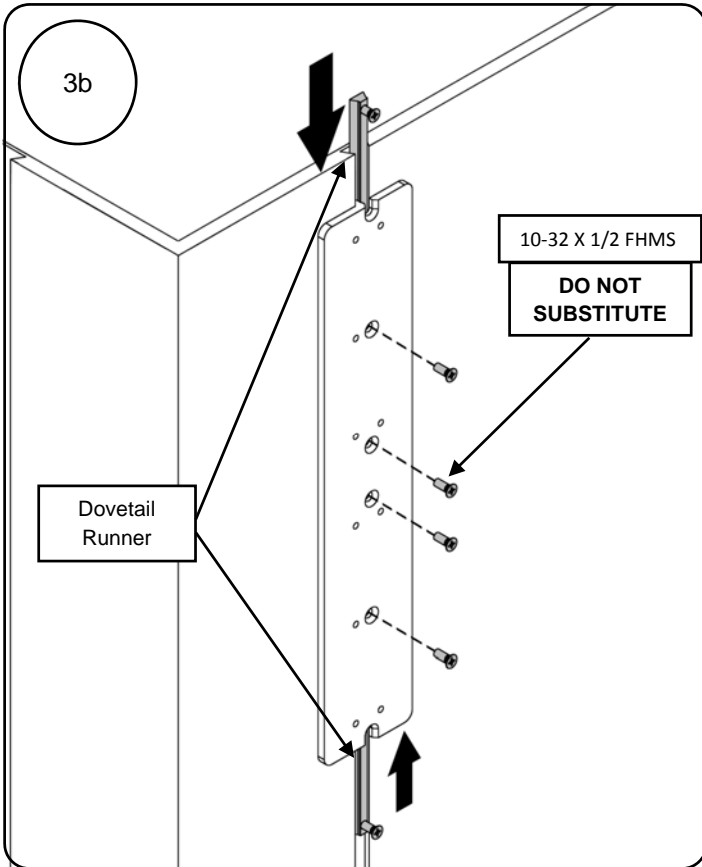
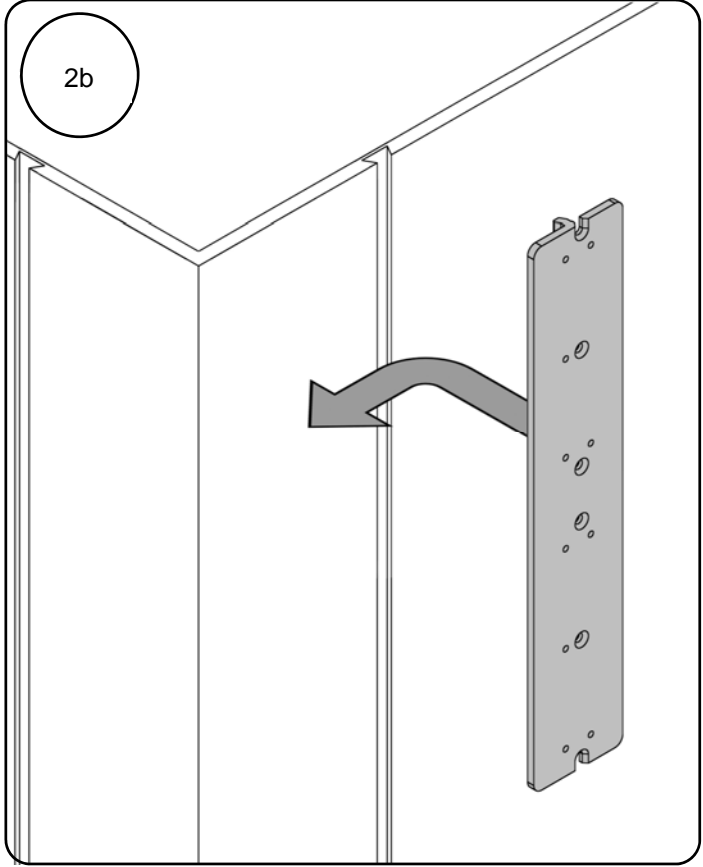
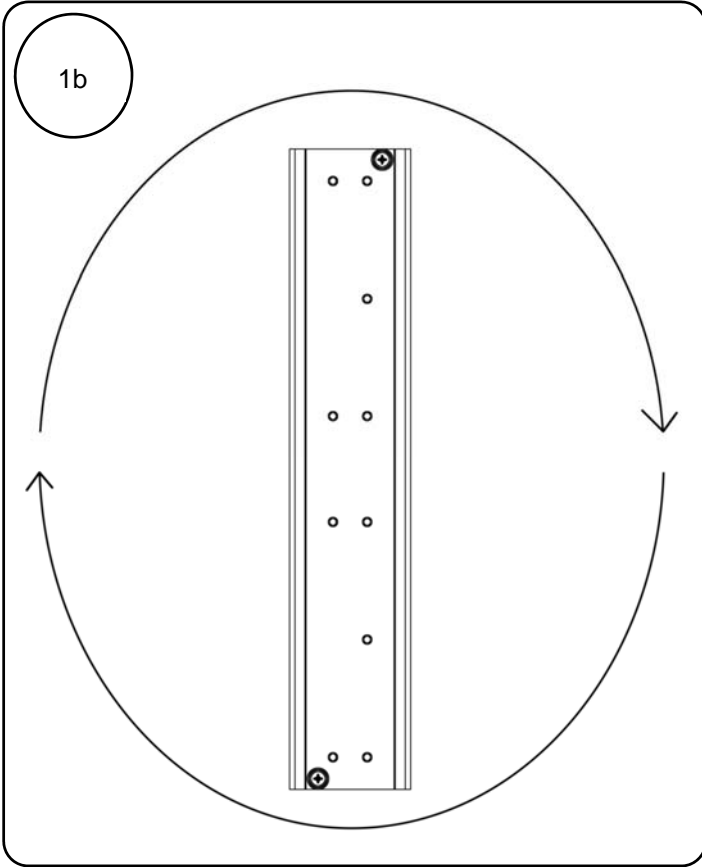


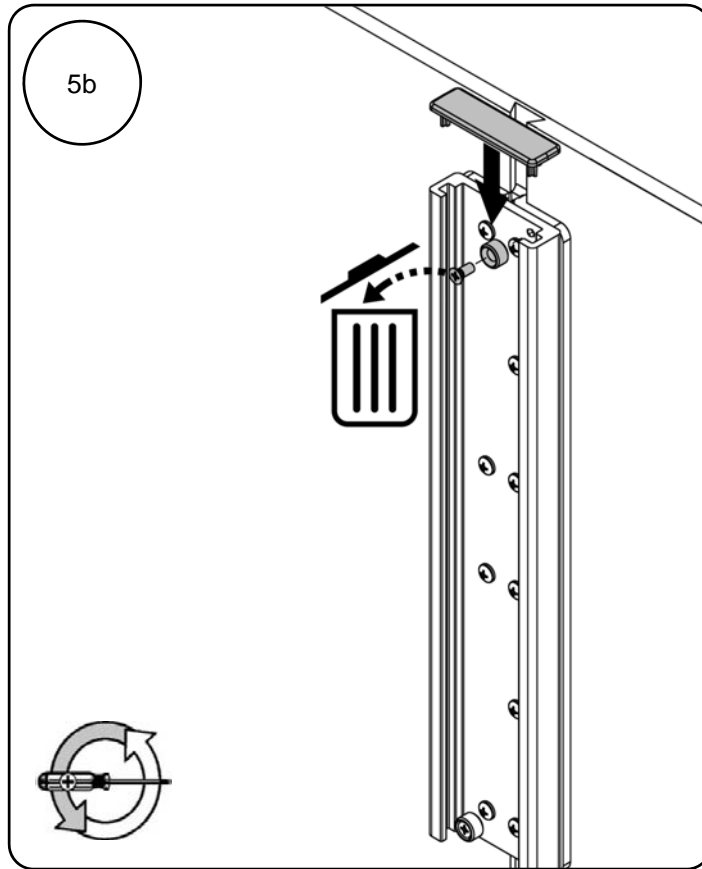
Max Allowable Load Mounted in GCX Channel
27.2 kg (267 N), 159 N·m
(60 lbf, 1407 in·lbf)

Ensure adequate load capacity of attachment structure(s) prior to installing this mounting accessory and mounting related equipment. Failure to follow load limits and warnings may result in damage to equipment or injury to personnel.

<p>Parts Reference: <i>The following parts and hardware are included in this installation kit:</i></p>  <p>IMPORTANT: Use of fasteners as illustrated and instructed is critical to a safe installation. Any substitution of fastener OR use of another length fastener will result in an unsafe installation.</p> <p>Tools Required:</p> <ul style="list-style-type: none"> Phillips Screwdriver (not included) 	 <p>Dovetail Runner</p>  <p>Backing Plate</p> <p>10-32 x 1/2 FHMS</p>	 <p>10-32 x 3/8 PHMS</p>  <p>Channel Cap</p>  <p>Channel</p>
---	--	--







Routine Maintenance

Inspect all fasteners associated with the mounting assembly at least every 6 months. Tighten or Adjust as necessary for optimal operation and safety.

Cleaning the Mounting Assembly

The mounting assembly may be cleaned with most mild, non-abrasive solutions commonly used in the hospital environment (e.g. diluted bleach, ammonia, or alcohol solutions).

The surface finish will be permanently damaged by strong chemicals and solvents such as acetone or trichloroethylene.

Steel wool or other abrasive material should never be used.

Damaged caused by the use of unapproved substances or processes will not be warranted. We recommend testing of any cleaning solution on a small area of the mounting assembly that is not visible to verify compatibility.

Never submerge or allow liquids to enter the mounting assembly. Wipe any cleaning agents off the mounting assembly immediately using a water-dampened cloth. Dry the assembly thoroughly after cleaning.

CAUTION: GCX makes no claims regarding the efficacy of the listed chemicals or processes as a means for controlling infection. Consult your hospital's infection control officer or epidemiologist. To clean or sterilize mounted devices or accessory equipment, refer to the specific instructions delivered with those products.