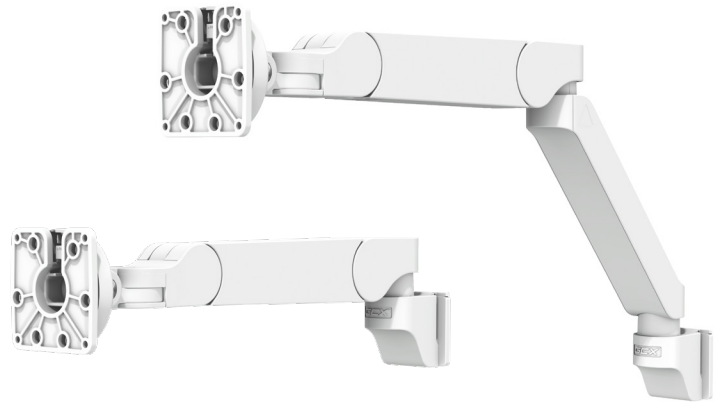


# VHM-T

VARIABLE HEIGHT ARM FOR TABLETS

The industry's only medical-grade mounting arm for tablet devices.

PATENT PENDING



## FEATURES

### Cable Management

Enables easier cleaning, provides simple access for service, and creates a professional-looking installation.

- Up to two (2) cables can be accommodated
- 100 percent (approx.) of cabling is concealed
- Covers can be easily removed and reinstalled
- Stops at the front-end, Slide/Channel pivot point and midway pivot on extension version to prevent cable damage

### Precision & Ease of Movement

The arm moves smoothly into place at every point across its full range of motion for optimal positioning and viewing.

- Swivel and tilt adjustability at the front-end with preset tension
- Rotation at the front-end for portrait/landscape screen orientation
- Pivot positioning at the Slide/Channel interface
- Pivot at the mid-point for version with extension
- Parallel linkage for consistent viewing angle
- Remains in position through range of motion and load rating range without counterbalance adjustment

### Durability and Cleanability

Withstands constant use and cleaning regimens to outlast generations of devices.

- Medical-grade arm designed and tested to applicable sections of IEC60601-1 3rd Edition
- Strong, chemical-resistant materials
- Die-cast aluminum core for strength

### Optional Accessories

Mountable enclosure for tablet device.

## TECHNICAL SPECIFICATIONS

- Vertical motion range: 12" / 30.5 cm total travel
- Lateral motion range: +/- 85°
- Front-end tilt range: -75° back / +90° forward
- Front-end swivel range: +/- 90°
- Front-end rotation range: +/- 135° with mechanical rotation lock-out
- Front-end interface: VESA 75mm
- Load range: 2 - 4.5 lb / .91 - 2.0 kg or 3.5 - 6 lb / 1.59 - 2.7 kg
- Maximum offset from VESA mounting plate: .5" / 12.7 mm

#### Arm without Extension

- Maximum reach: 15 - 17.5" / 38.1 - 44.5 cm

#### Arm with Extension

- Maximum reach: 21.5 - 24" / 54.6 - 61 cm
- Extension length: 7" / 17.8 cm
- Maximum cable diameter: .25" / 6.35 mm
- CE Marked / REACH & RoHS compliant
- Warranty: Free of defects in materials and workmanship for a period of five (5) years



Channel, tablet, tablet cables and mountable tablet enclosure sold separately.