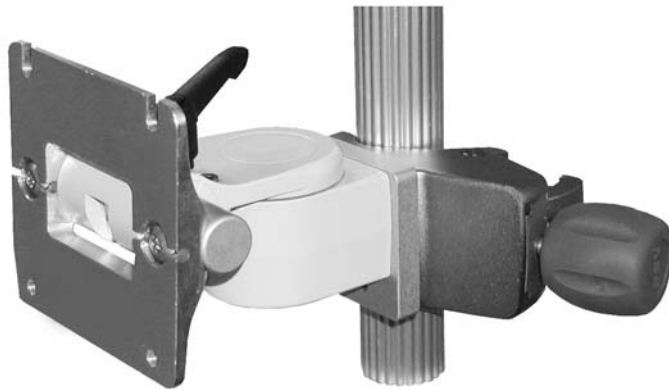


## PRC™ Post Rail Clamp for Flat Panel Displays

**GCX P/N: FLP-0008-17**

The PRC™ is ideal for mounting to a post or a 10 x 25mm rail - one clamp works for both applications. The compact, durable design provides the performance expected from a GCX product.

Compatible with flat panel displays having 75 or 100 mm mounting configurations.

- Load capacity: 25 lbs (11.4 kg)
- Post grip range: .75 - 1.50" (19 - 38 mm)
- Rail compatibility: 10 x 25 mm
- Provides tilt and swivel adjustments
- Includes 75 to 100 mm VESA Adapter Plate



GCX is an ISO 9001 registered company (TUV-Essen)

GCX, VHRS, VHM, PRC, M-Series, PolyMount and PolyQuip are trademarks of GCX Corporation.

© Copyright 2008