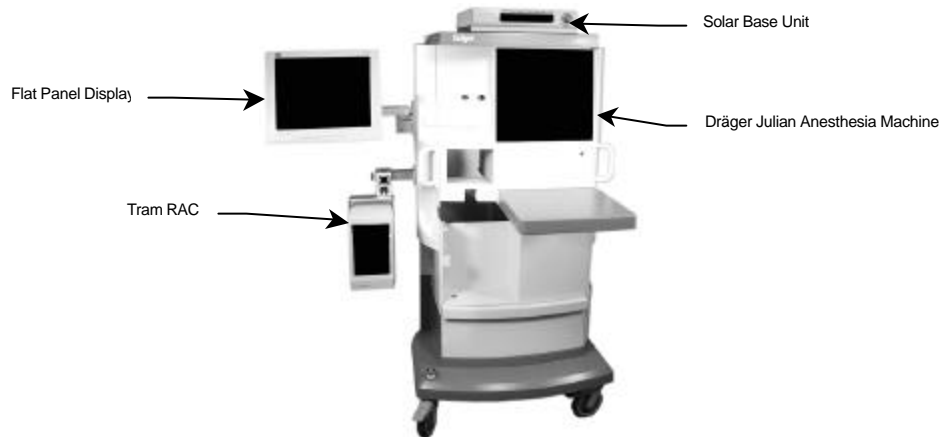


## GCX Mounting Assembly Operation/Installation Manual Dräger Model Julian® with GE-Marquette Solar® 8000 Patient Monitoring System



The purpose of these instructions is to:

1. Describe attachment of GCX mounting hardware to the Julian anesthesia machine.
2. Describe attachment of the Solar 8000 monitoring hardware to the GCX mounting hardware.



**WARNING:** USE OF MOUNTING HARDWARE AND MONITORING COMPONENTS OTHER THAN THOSE DESCRIBED IN THIS DOCUMENT MAY RESULT IN SERIOUS INJURY DUE TO TIPPING OF THE ANESTHESIA MACHINE. ALL JULIAN MOUNTING CONFIGURATIONS REQUIRE THE 30 Kg COUNTERWEIGHT OR THE "BIGFOOT" UPGRADE SET AVAILABLE FROM DRÄGER.

DO NOT CONNECT ANY SOLAR 8000 COMPONENTS INTO ANY AC AUXILIARY SOCKETS ON THE BACK OF JULIAN. USE SEPARATE POWER SOCKETS.

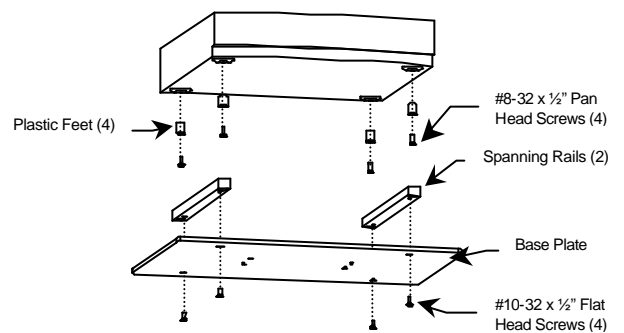
### INSTALLATION

Tools Required: Philips head screw driver, Hex key (incl.).

#### Solar 8000 Base Unit

Parts required: Spanning Rails and associated hardware

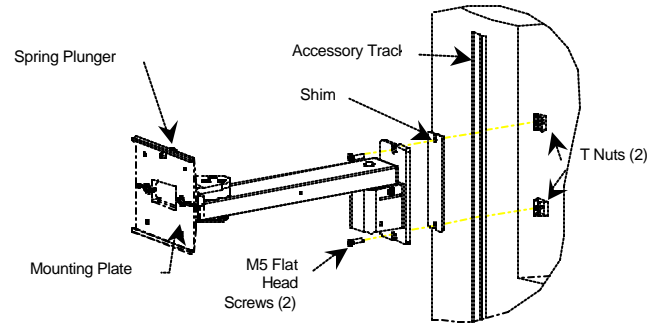
1. Attach the Spanning Rails to the blue side of the Base Plate using the #10-32 x 1/2" flat head machine screws. Remove the existing rubber feet from the bottom of the Solar 8000 Base Unit. Attach the Plastic Feet to the (4) threaded inserts in the bottom of the Solar 8000 Base Unit using the #8-32 x 1/2" pan head machine screws.
2. Clean the top shelf of the Julian, and the white side of the Base plate with a mild solution of ammonia or bleach. Dry both surfaces thoroughly.
3. Attach the (4) strips of double stick foam tape to the white side of the Base Plate.
4. Place the Base Plate onto the Julian top shelf. Press down firmly for several seconds. The double stick tape will take up to 24 hours to set permanently, and will then require a blade or matte knife for removal.
5. Place the Solar 8000 Base Unit onto the Base Plate, aligning the Plastic Feet with the holes in the Spanning Rails.



## Pivot Arm & Flat Panel

Parts required: Pivot arm for Julian

1. To attach the Pivot Arm to the Julian left side accessory track, first run the M5 flat head screws (2) partly into the threaded T-Nuts (2).
2. Slide one T-Nut up into the bottom of the accessory track. Drop the exposed screw into the slots in the top of the Pivot Block Plate and Shim.
3. Position the Pivot Arm as desired and tighten the screw.
4. Slide the second T-Nut up into the bottom of the accessory track, and into the slot in the bottom of the Pivot Block Plate and Shim. Tighten the screw.
5. Adjust the height of the Pivot Arm to match the spacing shown in the diagram. To do this, loosen the two flat head screws.



## Flat Panel

1. Slide the Flat Panel horizontally into the Mounting Plate until the spring plunger locates in the clearance hole in the Mounting Adapter. Tighten the (2) nylon thumb screws at the rear of the Mounting Plate.



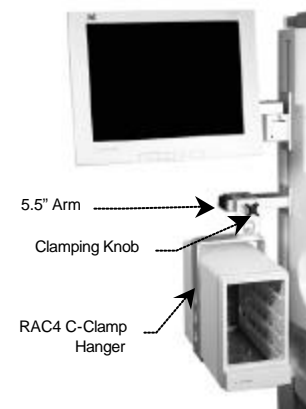
## RAC4 or RAC2 Housing

Parts required: C-Clamp hanger for RAC4 or RAC2

1. Attach the C-clamp Hanger to the bottom of the RAC housing using the #6-32 machine screws provided.
2. Positioning: The housing module can be mounted using the C-clamp hanger off the pivot arm or optionally on a separate 8" (14cm) arm.
3. Turn the C-clamping knob on the C-clamp counterclockwise as far as possible. Position the C-clamp over the top of the Flat Panel support arm and tighten the clamping knob.

OPTION: Separate 5.5" arm

1. To mount the arm, first run the M5 flat head screws (2) partly into the threaded T-Nuts (2).
2. Slide one M5 T-Nut up into the bottom of the accessory track. Drop the exposed screw into the slots in the top of the Slide Plate and Shim.
3. Position the Arm as desired and tighten the screw.
4. Slide the second T-Nut up into the bottom of the accessory track, and into the slot in the bottom of the Plate and Shim. Tighten the screw.
5. Adjust the height of the Arm to match the spacing shown in the diagram. To do this, loosen the two flat head screws, position the arm, then re-tighten the screws.



## Flat Panel Power Supply

The Flat Panel Power Supply may be mounted on the inside of the Julian rear door *adjacent to the Flat Panel Display*. The Curved Blocks (attached to the back of the Power Supply Holster) may be attached to the rear door by using either:

- VHB tape strips, or
- machine screws included with the kit.

### VHB Tape:

1. Clean the door using soap or a mild detergent. Dry the area thoroughly.
2. Remove the backing from the tape strips and press the Curved Blocks firmly against the inside of the back door. The double stick tape will take up to 24 hours to set permanently, and will then require a blade or matte knife for removal.
3. Note that the AC power cord should be pointed upwards, so that the Power Supply is removable.

### Machine Screws:

1. To mount the Power Supply with machine screws, drill through the rear door using a 5/32" (4 mm) drill.
2. Attach the holster by running the supplied (4) #6-32 machine screws through the #6 flat washers, through the drilled holes, and into the threaded holes in the Curved Blocks.

**Caution: Do not plug the power supply into any AC auxiliary sockets on the back of Julian. Use a separate power socket.**



## Tramnet Hub

The Tramnet Hub may be mounted on the inside of the Julian rear door *opposite from the Flat Panel Display*. The Curved Blocks (attached to the back of the Tramnet Hub) may be attached to the rear door by using either:

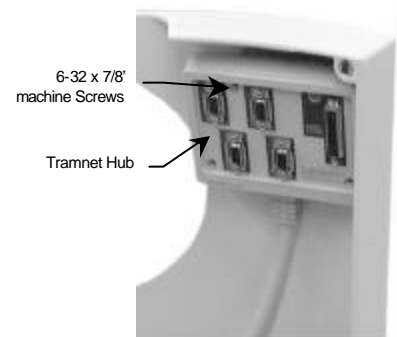
- VHB tape strips, or
- machine screws included with the kit.

### VHB Tape:

1. Clean the door using soap or a mild detergent. Dry the area thoroughly.
2. Attach Tramnet Hub to Curved Blocks using the (2) 6-32 x 7/8" machine screws. Remove the backing from the tape strips and press the Curved Blocks firmly against the inside of the back door. The double stick tape will take up to 24 hours to set permanently, and will then require a blade or matte knife for removal.

### Machine Screws:

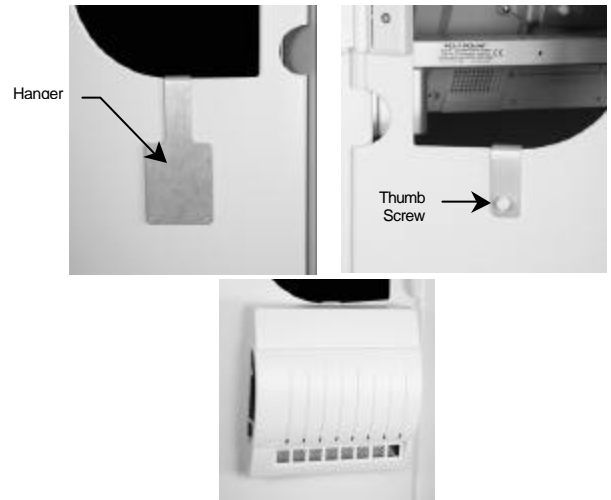
1. Drill through the rear door using a 5/32" (4 mm) drill.
2. Attach Tramnet Hub by running the (2) #6-32 machine screws through the #6 flat washers, through the drilled holes, and into the threaded holes in the Curved Blocks.



## Octanet

The Octanet may be mounted on the *outside* of one of the Julian rear doors.

1. Attach the Octanet to the Hanger using the (4) #6-32 machine screws provided.
2. Slide the Hanger Tab onto the edge of the Julian rear door, in one of the D-shaped cutouts.
3. Tighten the nylon thumb screw on the inside Tab.



## INSTRUCTIONS FOR USE

### Pivot

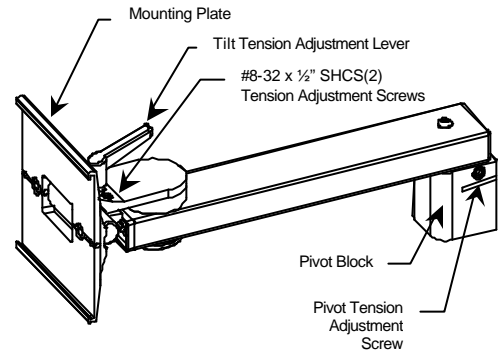
1. To pivot or move the Flat Panel Display, simply push on the side of the Arm or the Display.
2. To adjust the tension of the pivot action, tighten or loosen the pivot adjustment screw (at the top of pivot block, above the slot, just below the arm) with the hex key provided.

### Swivel

1. To rotate the Flat Panel Display, simply push or pull the corners of the display.

### Tilt

1. Adjust the overall tilting tension by evenly tightening or loosening the (2) #8-32 X 1/2" SHCS - (Tension Adjustment Screws) with the hex key provided. Use the Adjustment Lever to fine tune and lock the tilt position.
2. Turn Adjustment Lever counter clockwise to loosen. Grasp the top and/or bottom of the monitor/display and tilt to the desired angle.
3. Turn Adjustment Lever clockwise to tighten and lock position.



### Cleaning

1. The mounting assembly may be cleaned with most mild, non-abrasive solutions commonly used in the hospital environment (e.g. diluted bleach, ammonia, or alcohol solutions).
2. The surface finish will be permanently damaged by strong chemicals and solvents such as acetone and trichloroethylene.
3. Steel wool or other abrasive material should never be used.
4. Damage caused by the use of unapproved substances or processes will not be warranted. To verify compatibility, it is recommended that any cleaning solution be tested on a small area of the arm that is not visible.
5. Never submerge the mounting arm. Wipe any cleaning agents off of the arm immediately, using a water-dampened cloth. Dry the arm thoroughly after cleaning.

**CAUTION:** GCX makes no claims regarding the efficacy of the listed chemicals or processes as a means for controlling infection. Consult your hospital's infection control officer or epidemiologist. To clean or sterilize mounted devices or accessory equipment, refer to the specific instructions supplied with those products.

## PARTS LIST

GCX P/N	Dräger P/N	GE-MMS P/N	DESCRIPTION
DR-0015-82	MM15713	2001347-001	Top Shelf Base Plate
ME-0031-89	MM15714	2001348-001	Top Shelf Rails & Feet for Base Unit
DR-0015-25	MM15721	2001349-001	12" Pivot Arm with Riser & Julian Fittings
ME-0017-78	MM15715	404757-005	RAC4A C-Clamp Hanger
ME-0016-78	MM15716	404757-001	RAC2 C-Clamp Hanger
DR-0015-42	MM15725	2001355-001	5.5" Blank Arm with Julian Fittings
DR-0015-85	MM15724	2001356-001	Octanet Hanging Bracket
ME-0040-80	MM15722	2001357-001	Power Supply Holster
ME-0024-80	MM15723	2001358-001	Tramnet Hub Attachment Kit